



Description:

The IFSUMB, In-line Free Standing Undercounter Merchandiser Base, is 78" tall. The IFSUMB features a merchandising area above a rigid mid shelf, sturdy plywood frame construction. Shelves and baskets are easily configured to maximize merchandising opportunities around a self-pay unit or coffee machine. The slat wall under the rigid mid shelf has ample space for additional shelves and hooks for additional merchandising opportunities. LED lighting can easily be incorporated behind the valance to illuminate your display. The IFSUMB ships fully assembled.

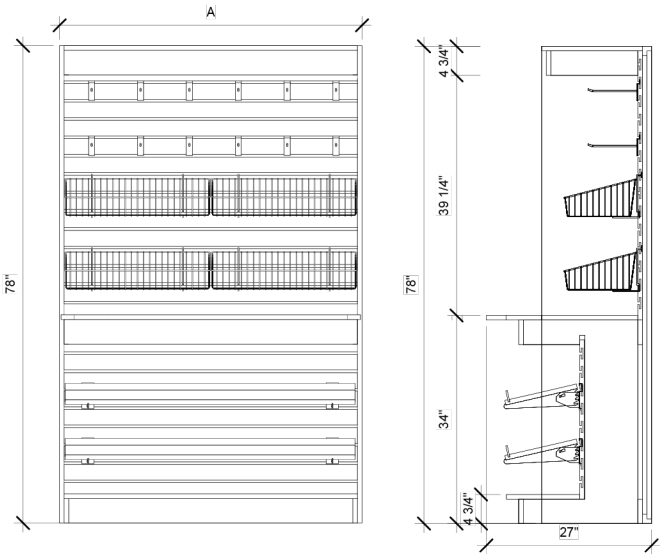
In-Line Free Standing Fixture

A 78" tall free-standing merchandiser with countertop

Order Process:

- Send PO or equivalent to Axis Sales Representative
- Determine payment method and terms (credit card, wire transfer, check)
- Receive acknowledgement and estimated ship date from Axis Designs

Email: Orders@axisdesigns.net



MODEL	Inside Width-A	Outside Width-A	Overall Height	Counter Height	Counter Depth
IFSUMB-3678	36"	37.5"	78"	34"	24"
IFSUMB-4278	42"	43.5"	78"	34"	24"
IFSUMB-4878	48"	49.5"	78"	34"	24"

Hardware Packages



24" Sloping Basket
24 x 12 x 6 x 2
BSK-24120804



12" Basket
12 x 12 x 4
BSK-121204



12" Sloping Basket
12 x 12 x 8 x 4
BSK-12120804



Adjustable Angled Shelf Kit
V-SHLF-(SIZE)-(COLOR)



Slatwall Hook
HOOK-800

In-Line Free Standing Undercounter Merchanser Base Hardware Packages

	N/A	36" Width	42" Width	48" Width
Hardware Package A	N/A	(10) 8" Hooks, (6) 12" w x 12" d x 4" h Wire Baskets, (6) 12" w x 12" d x 8" back x 4" front Sloping Wire Baskets	(10) 8" Hooks, (6) 12" w x 12" d x 4" h Wire Baskets, (6) 12" w x 12" d x 8" back x 4" front Sloping Wire Baskets	(12) 8" Hooks, (4) 24" w x 12" d x 6" back x 2" front Sloping Wire Baskets, (8) 12" w x 12" d x 4" h Wire Baskets
Hardware Package B	N/A	(10) 8" Hooks, (6) 12" w x 12" d x 8" back x 4" front Sloping Wire Baskets, (2) Millwork Shelves with Acrylic Product Stops	(10) 8" Hooks, (6) 12" w x 12" d x 8" back x 4" front Sloping Wire Baskets, (2) Millwork Shelves with Acrylic Product Stops	(12) 8" Hooks, (4) 24" w x 12" d x 6" back x 2" front Sloping Wire Baskets, (2) Millwork Shelves with Acrylic Product Stops
Hardware Package C	N/A	(10) 8" Hooks, (4) Millwork Shelves with Acrylic Product Stops	(10) 8" Hooks, (4) Millwork Shelves with Acrylic Product Stops	(12) 8" Hooks, (4) Millwork Shelves with Acrylic Product Stops

Standard Color Options



Stone Wood
Color Code: CLSW



Black Pine
Color Code: CDBP



White Elm
Color Code: WLWE



River Elm
Color Code: WDRE

Other colors available - Ask us!

Specifications

	N/A	36" Width	42" Width	48" Width
Shipping Weight (lbs)	-	272	272	360
Shipping Dimensions	-	45" L x 31" W x 84" H	45" L x 31" W x 84" H	57" L x 31" W x 84" H

Electrical Specifications

Volts / Hz / Phase	115 / 60 / 1
Amps	0.1
NEMA Configuration	5-15P