

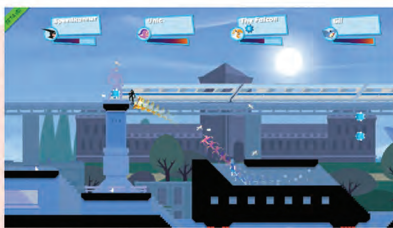
# polycade<sup>®</sup> RETRO2



- Features two 27" monitors
- Large game library of modern and retro titles
- Customize your cabinet with different games
- Retro-Style cabinet with classic game play



# polycade RETRO2 GAMES



Cut-throat multiplayer running game that pits 2 players against each other. Run, jump, swing around, and use devious weapons and pick-ups to knock opponents off-screen! One of the most competitive games you'll ever play.



With your brilliant robe and magic powers, it's time to build some Tricky Towers! Stack your bricks in this land of fable, whose marvelous tower will be the most stable? Battle your friends and rise to fame, in this frantic physics game. Tetris Meets Jenga!!!



Lethal League is a competitive projectile fighting game where you have to hit an anti-gravity ball into the face of your opponent to win. The ball speeds up with every strike, up to explosively extreme velocities. Play intense local matches with friends and foes, challenge yourself in the singleplayer mode or battle



Roof Rage is a Martial Arts Platform Fighter featuring epic rooftop battles. Similar game mechanics to Super Smash Bros with a retro feel.



Master the longboard as you drift through stunning mountain ranges, swerve through bustling city streets, and along the sandy beaches of Sunset Island. Train to perform epic tricks, from jumping off-ramp to longboarding backwards. Grab Your Longboard and Race to the Top in Tanuki Sunset!



(Optional Amusement reader Door )

Polycade Retro 2 is designed to be the perfect arcade for any situation. You can line up 5 of them with 1-4 unique games in each or put 1 in a location with a larger library to maximize space. Easy to use operator menu allows you to pick what games are available to your location.

The machine features two 27" monitors, one for game play & the other as a spectator screen.

For sound the machine has two 4" 160w speakers with inside mounted 2 channel amp.

Operating system is a Polycade Arcade PC with Polycade Brook control boards & Sanwa Buttons/Joysticks.

Machine works off of pulse for pay to play to add time to game play. operator picks pricing and time.

## PAYMENTS



-Credit/Debit

-Apple/Google Pay

-Touchless/Chip/swipe

-Embed Reader

-Bills

-FreePlay

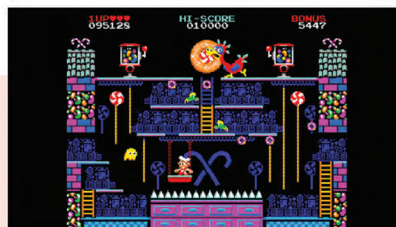
-Coin/Tokens



Penarium is a frantic 2D arena arcade game where you take on the role of Willy, trapped in a sinister circus show. Run, jump and avoid an array of killer death-traps while being cheered on by a sadistic crowd that's out for blood.



Annalynn is a 2D platformer made in the style of arcade games from the early '80s. Collect the coins, grab the bonus foods, and turn the tables with blinding rubies! Think you've got what it takes to go for the high score?



If a long lost arcade game from 1983 resurfaced today, it would be Donut Dodo - a classic 2D platformer from the golden era, tough as nails and challenging for the whole family! Ready to top the high score table?