



**Headache-Free connectivity for your IoT & M2M applications.**



## OptConnect neo

### Features

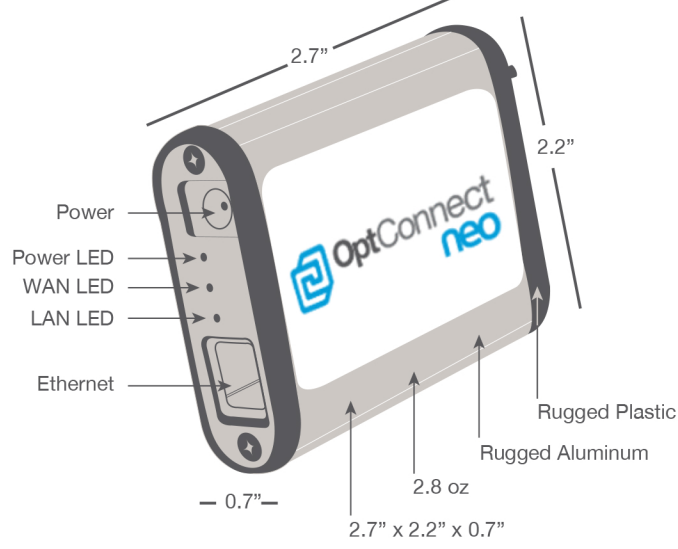
- **Plug-n-play** High-speed connectivity
- **Lightweight** 2.8 oz
- **Compact size** 2.7" x 2.2" x 0.7"
- **Rugged** Aircraft grade Aluminum, Temp resistance -40c - +85

### Additional Features

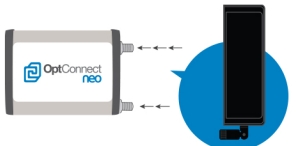
- Cost-effective replacement for landline dialup circuits or analog cell-phones – Primary connectivity for PLCs, RTUs, POS, ATM solutions
- Backup/redundant network connections for LANs
- High speed data transfer rate
- Full duplex transceiver ethernet port
- LED network status indicators
- Remotely manageable and upgradeable

### Advantages

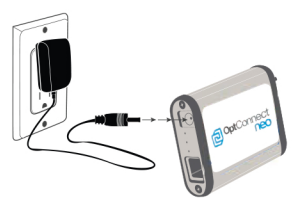
- Primary network connectivity for micro markets, kiosks, signs, POS, ATMs, etc.
- Flexible and practical
- Modular antennas
- Flexible mounting options
- Delivers speed and wide coverage (Cellular Technology 4G LTE)
- 5v power
- Enables remote device connectivity
- Save money, time and improve business efficiency
- Always on
- Low power consumption 4G 10-15 watts peak
- Built-in Firewall – 2.2
- DHCP server for local automatic IP assignment – can assign static IPs
  - Public and Private IP modes for local IP assignment
  - NAT with VPN Passthru
  - Domain name addressable
- High-Speed Data Connections



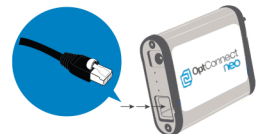
**1**  
Attach antennas.



**2**  
Apply power.



**3**  
Plug in Ethernet cable.



**4**  
Plug Ethernet cable into PC or router WAN port.



**Wireless WAN**

GSM	HSPA+, GPRS, EDGE - 800/850, 900, AWS, 1900, 2100 MHz (PTCRB Approval not complete)
CDMA	EV-DO Rev A and 1xRTT - 800/1900 MHz (Both Approved)
LTE	LTE 700 (B17), 850 (B5) AWS1700 (B4) 1900(B2) MHz LTE 700 (B13), AWS1700 (B4) MHz
WWAN Embedded Module	Telit 910 Series
SIM Slots	1 internal 3FF Micro-SIM Slot
Antenna Connectors	1 x 50 Ω SMA (Center pin: female)

**Ethernet**

Ports	1
Connector	RJ-45
Standard	IEEE 802.3
Physical Layer	10/100 Base-T
Data Rate	10/100 MBit/s
Mode	Full or Half duplex
Interface	Auto MDI/MDIX

**Management**

Fully Managed Service	OptConnect Portal
Processor and Memory	Atheros AR9331, 64MB RAM, 16MB FLASH
Protocol Support	HTTP, HTTPS, FTP, SSL

**Power**

Input	5 VDC (power supply with barrel connector included)
Consumption	Typical: 3.5 W; Max: 10 W

**General**

LEDs	Power On, LAN Connection, WWAN Service
Relative Humidity	5% to 95% (non-condensing)

**Approvals**

GSM/CDMA	Verizon ODI
Carrier Certifications	Certified by Verizon and most major carriers



**AVS Companies**  
avscorporations.com

(847) 439-9400  
info@avscorporations.com

