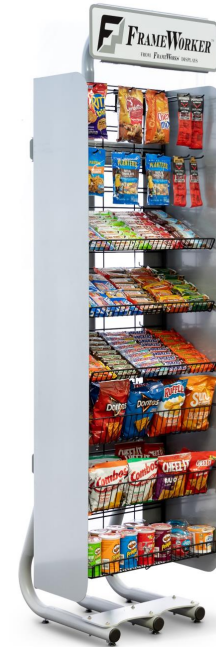
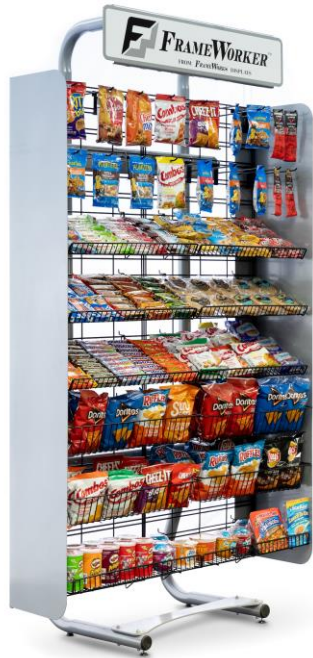


FRAMEWORKER™

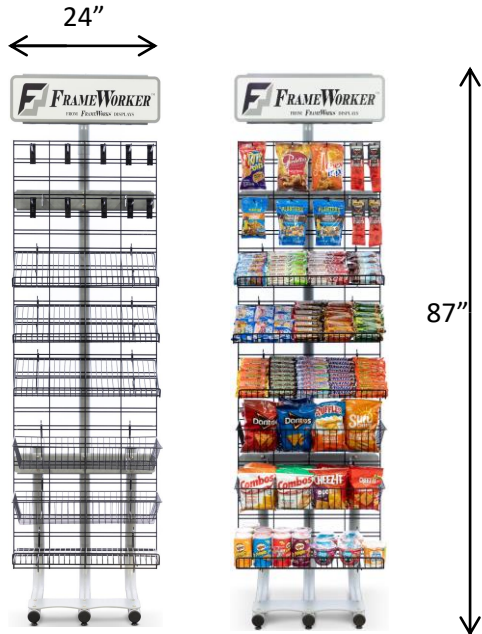
ASSISTANTS FOR RETAIL AND MERCHANDISE DISPLAYS™



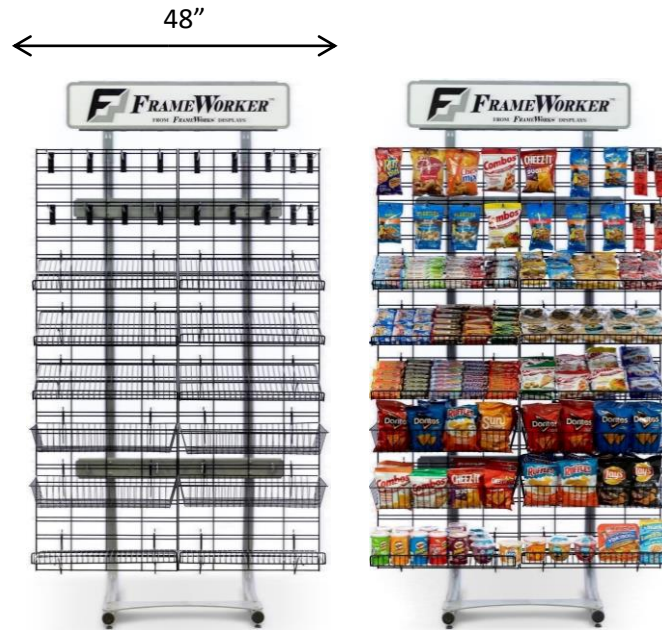
FRAMEWORKS™
DISPLAYS
MADE IN THE USA

FRAMEWORKS LLC

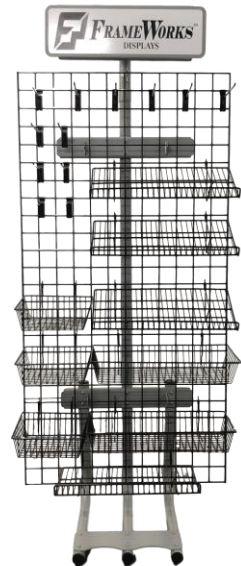
2304 Sampson St Muscatine, IA 52761 | 563-263-9999 | info@frameworksdisplays.com



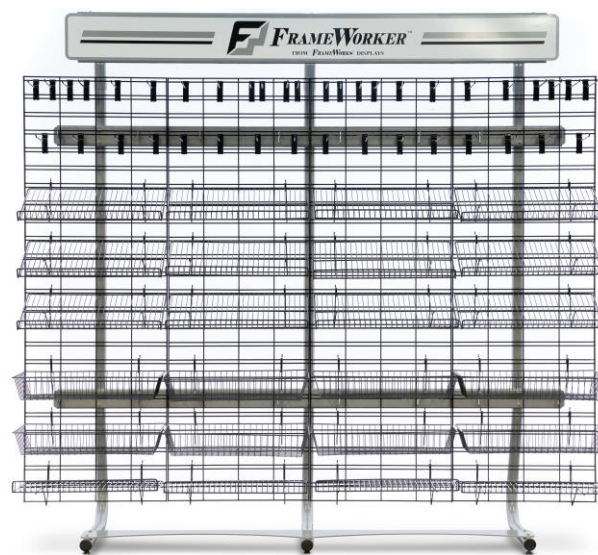
24" **FRAMEWORKER™ MINI**
Rated for 250lbs



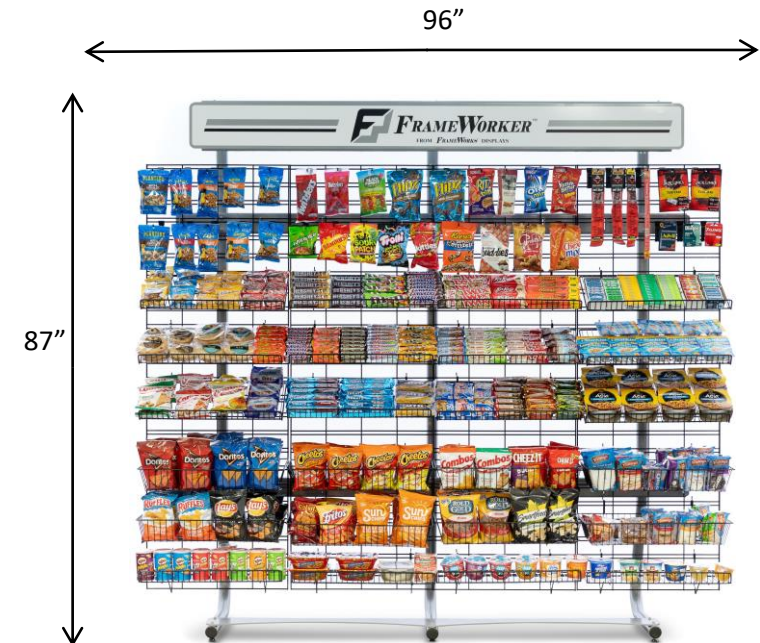
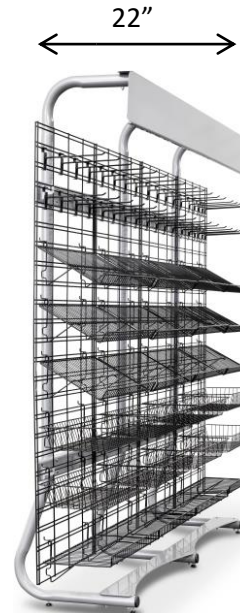
48" **FRAMEWORKER™**
Rated for 250lbs



36" **FRAMEWORKER™ MINI 3**
Rated for 250lbs



96" **FRAMEWORKER™ SENIOR**
Rated for 350lbs



FRAMEWORKER™

ASSISTANTS FOR RETAIL AND MERCHANDISE DISPLAYS™

Features and Facts about the **FRAMEWORKER™** from FrameWorks Displays.

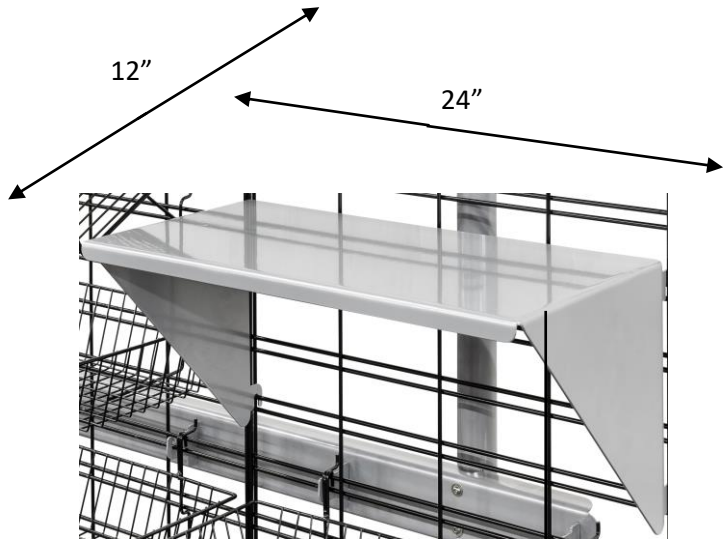
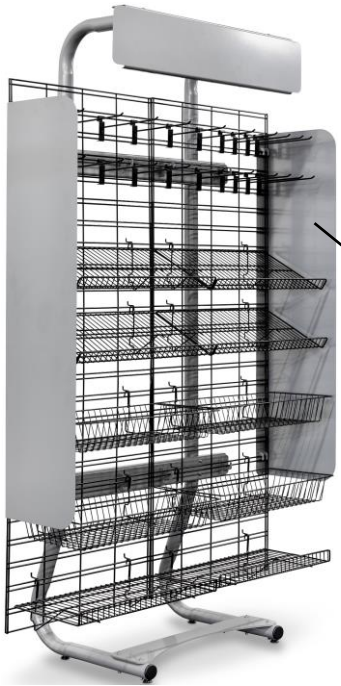
- The **FRAMEWORKER™** is Made in the USA.
- Each model is constructed using carbon steel.
- Each model is free standing.
- **FRAMEWORKER™** standard color is Camaro Silver.
- Units can be painted to specification.
- Each model can be used and assembled without the header.
- Use without the header provides an overall height of 78".
- All models of the **FRAMEWORKER™** have a depth of 22", from back to front of unit.
- The baskets, hooks, shelves and peg hooks all come with 12" depth.

FRAMEWORKER™

ASSISTANTS FOR RETAIL AND MERCHANDISE DISPLAYS™

Optional Equipment and Accessories

Small Side Panel enclosure



Large Side Panel enclosure

Multipurpose Shelf

DVR HIDE
BACK



FRONT



OPTIONAL BACK MOUNT SIGN
**ALL UNITS SHIPPED WITH FORWARD MOUNTED
SIGN DEMONSTRATED IN THE PICTURES ON THE LEFT**



FRAMEWORKER™ MINI
Color Silver
Height 87”
Height without sign 78”
Depth 12”
Width 24”
Rated for 150lbs evenly distributed
Estimated shipping weight: 100lbs

Components:
1 Upright Legs 16 Gauge Tube, Carbon Steel
1 Sign Legs 16 Gauge Tube, Carbon Steel
1 Sign; 24” 14 Gauge Sheet, Carbon Steel
2 Cross Members 12 Gauge Sheet, Carbon Steel
1 Base ¼” Plate, Carbon Steel

Tools & Hardware:
7/16” wrench (not included)

Allen wrench (included)
4- SS ¼” 3-1/4” Button head hex drive screw
2- SS ¼” 2-3/4” Button head hex drive screw
6- ¼” SS Lock washer
6- ¼” SS Flat Washer

6- ¼” SS Nylon-insert locknut

4- ¼” Leveling Feet

Includes:
Base Frame
1, 24” Grid wall
2, 24” Baskets
10, 10” Peg hooks
3, 24” Slanted Shelves
1, 24” Flat Shelves

FRAMEWORKER™ MINI 3
Color Silver
Height 87”
Height without sign 78”
Depth 22”
Width 36”
Rated for 250lbs evenly distributed
Estimated shipping weight: 185lbs

Components:
2 Upright Legs 16 Gauge Tube, Carbon Steel
2 Sign Legs 16 Gauge Tube, Carbon Steel
1 Sign 36” 14 Gauge Sheet, Carbon Steel
2 Cross Members 12 Gauge Sheet, Carbon Steel
1 Counter weight ¼” Plate, Carbon Steel

Tools & Hardware:
7/16” wrench (not included)

Allen wrench (included)
8- SS ¼” 3-1/4” Button head hex drive screw
8- SS ¼” 2-3/4” Button head hex drive screw
16- ¼” SS Lock washer
16- ¼” SS Flat Washer

16- ¼” SS Nylon-insert locknut

4- ¼” Leveling Feet

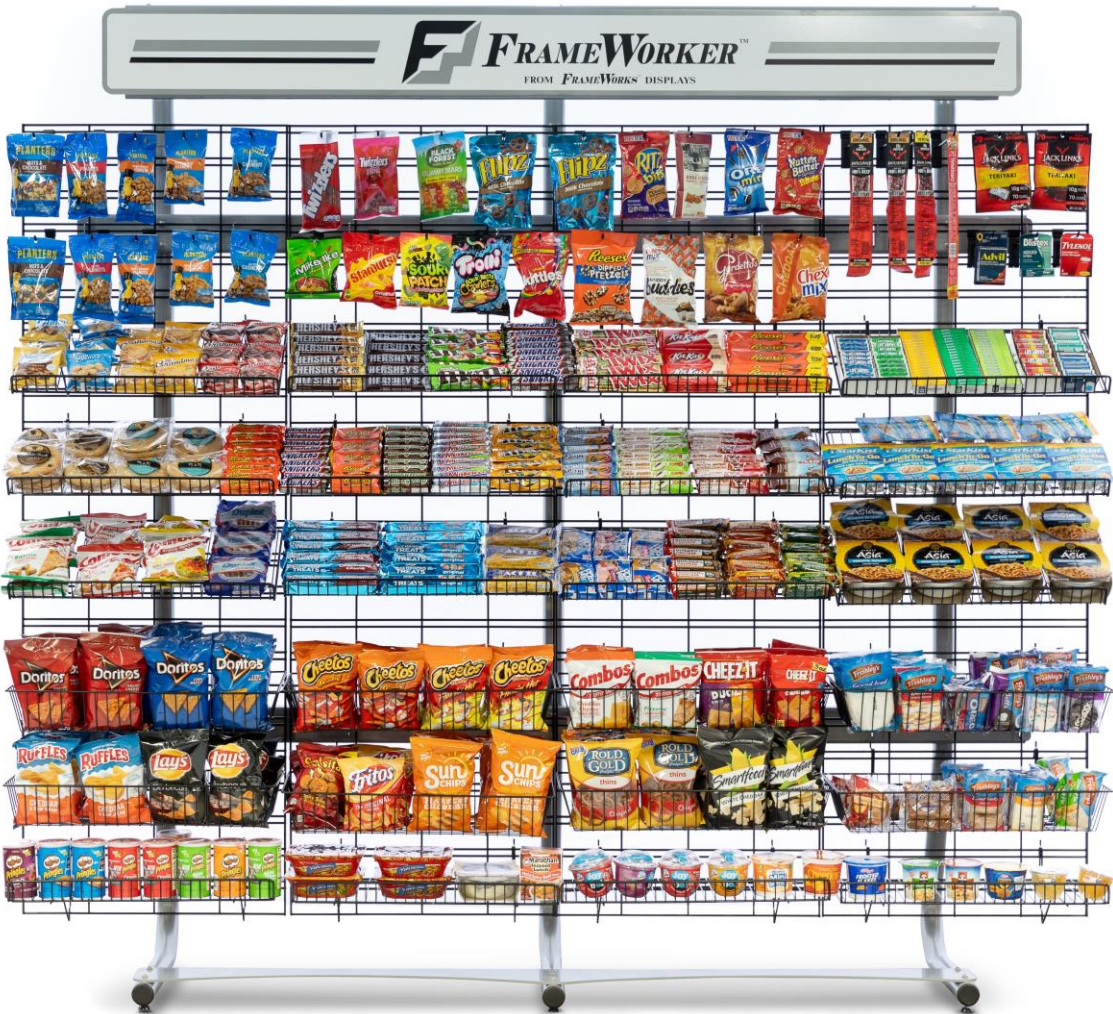
Includes:
Base Frame
1, 36” Grid wall
2, 24” Baskets
3, 12” Baskets
12, 10” Peg hooks
3, 24” Slanted Shelves
1, 24” Flat Shelves

FRAMEWORKER™

ASSISTANTS FOR RETAIL AND MERCHANDISE DISPLAYS™

Detailed information for each unit

FRAMEWORKER™ SENIOR



FRAMEWORKER™
Color Silver
Height 87”
Height without sign 78”
Depth 22”
Width 48”
Rated for 250lbs evenly distributed
Estimated shipping weight: 185lbs

Components:
2 Upright Legs 16 Gauge Tube, Carbon Steel
2 Sign Legs 16 Gauge Tube, Carbon Steel
1 Sign; 36” 14 Gauge Sheet, Carbon Steel
2 Cross Members 12 Gauge Sheet, Carbon Steel
1 Counter weight ¼” Plate, Carbon Steel

Tools & Hardware:
7/16” wrench (not included)

Allen wrench (included)
8- SS ¼” 3-1/4” Button head hex drive screw
8- SS ¼” 2-3/4” Button head hex drive screw
16- ¼” SS Lock washer
16- ¼” SS Flat Washer

16- ¼” SS Nylon-insert locknut

4- ¼” Leveling Feet

Includes:
Base Frame
2, 24” Grid wall
4, 24” Baskets
20, 10” Peg hooks
6, 24” Slanted Shelves
2, 24” Flat Shelves

FRAMEWORKER™ SENIOR
Color Silver
Height 87”
Height without sign 78”
Depth 22”
Width 96”
Rated for 350lbs evenly distributed
Estimated shipping weight: 220lbs

Components:
3 Upright Legs 16 Gauge Tube, Carbon Steel
3 Sign Legs 16 Gauge Tube, Carbon Steel
1 Sign 80” 14 Gauge Sheet, Carbon Steel
2 Cross Members 12 Gauge Sheet, Carbon Steel
1 Counter weight ¼” Plate, Carbon Steel

Tools & Hardware:
7/16” wrench (not included)

Allen wrench (included)
12- SS ¼” 3-1/4” Button head hex drive screw
12- SS ¼” 2-3/4” Button head hex drive screw
24- ¼” SS Lock washer
24- ¼” SS Flat Washer

24- ¼” SS Nylon-insert locknut

6- ¼” Leveling Feet

Includes:
Base Frame
4, 24” Grid wall
8, 24” Baskets
40, 10” Peg hooks
12, 24” Slanted Shelves
4, 24” Flat Shelves

Please allow +/- 1” variance on all dimensions

FRAMEWORKER™ SENIOR

ASSISTANTS FOR RETAIL AND MERCHANDISE DISPLAYS™

96" DISPLAY

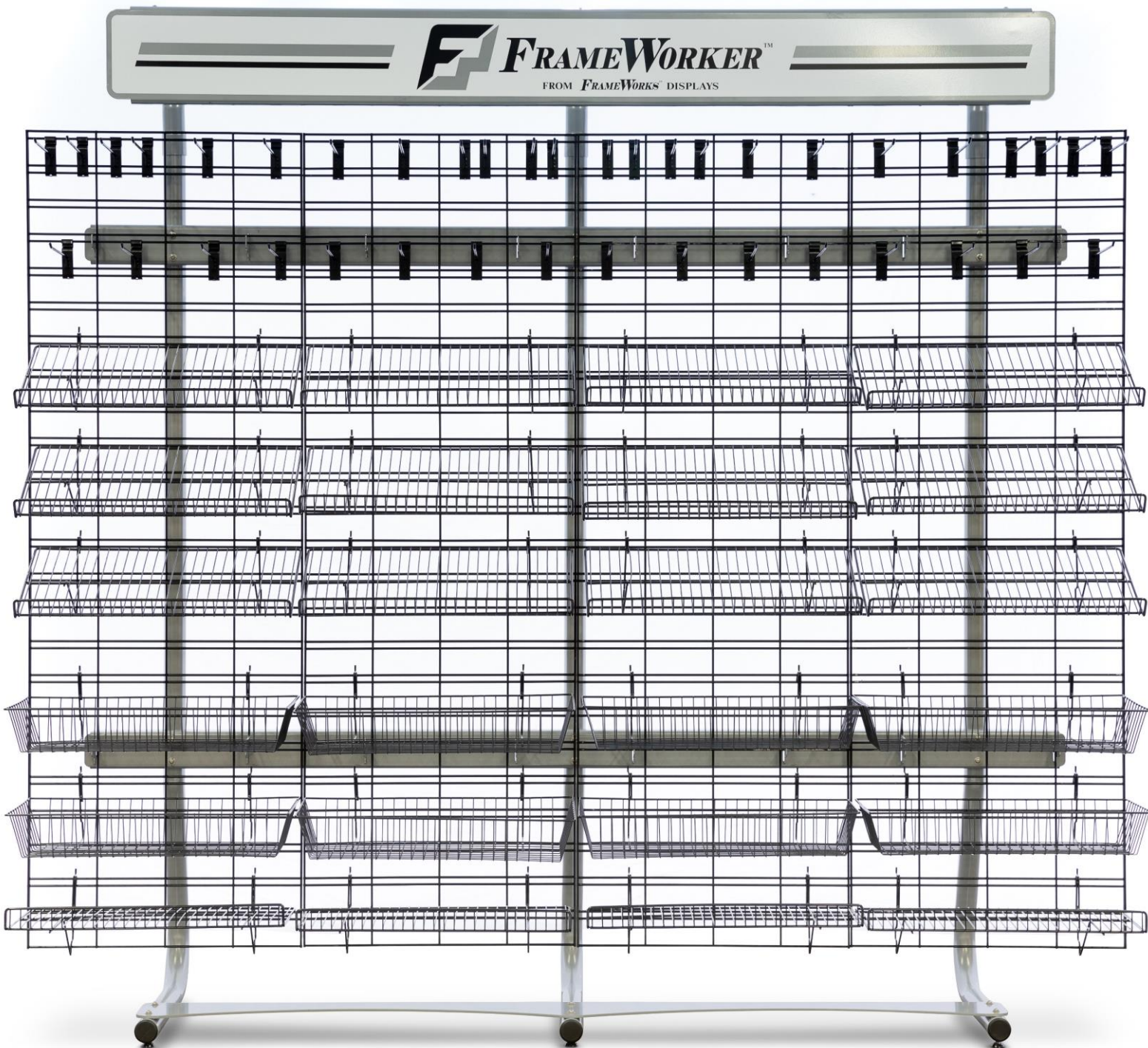


FRAMEWORKER™

FROM FRAMEWORKS DISPLAYS



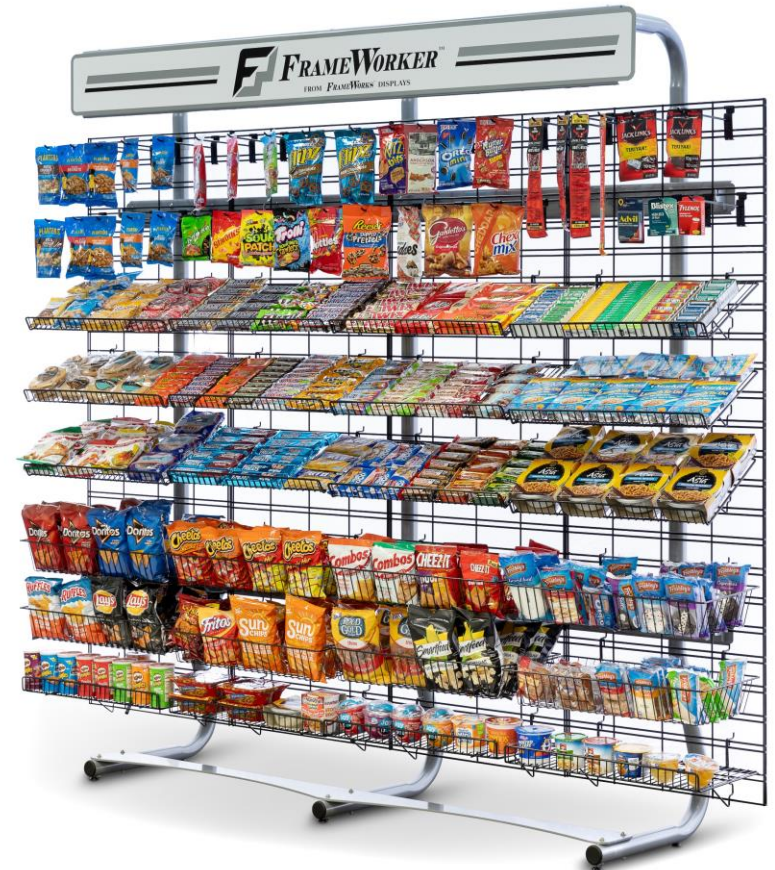
SHOWN WITH OPTIONAL SIDE PANELS AND MULTIPURPOSE SHELF

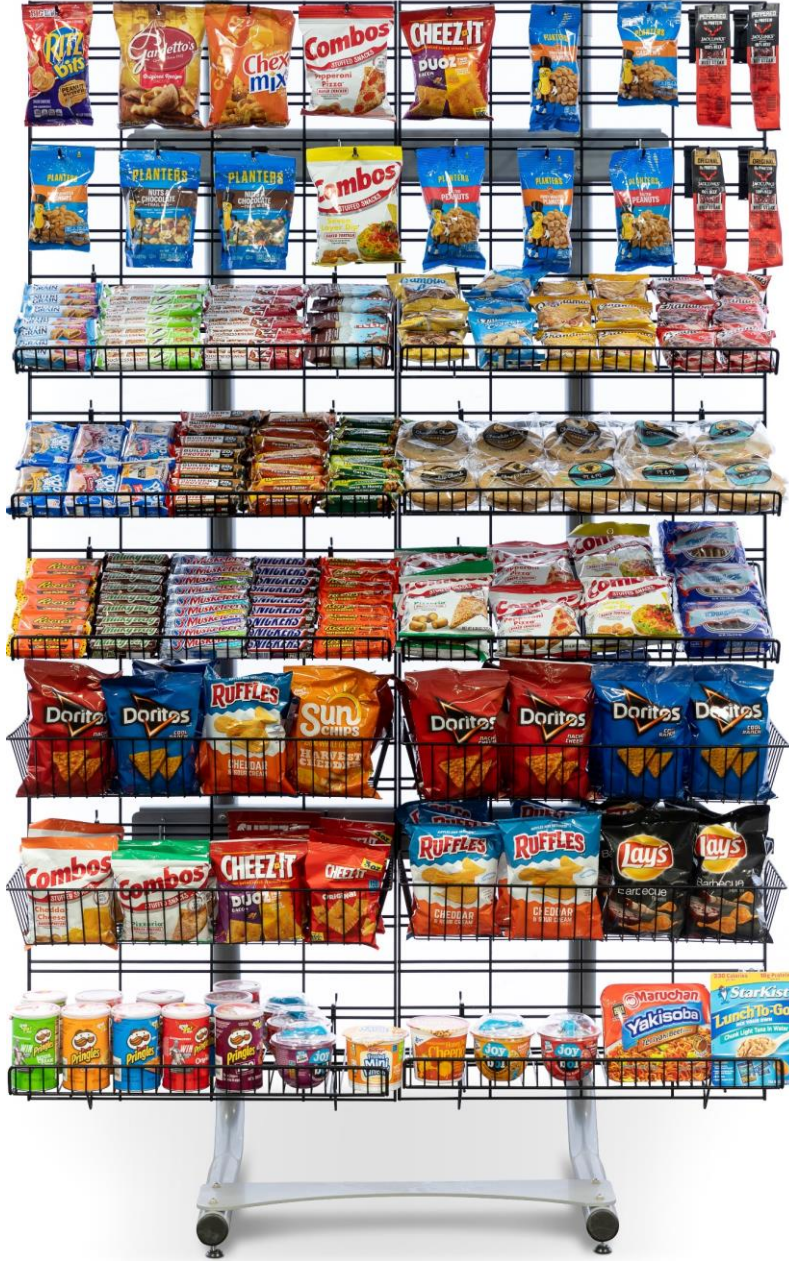


FRAMEWORKER™ SENIOR

ASSISTANTS FOR RETAIL AND MERCHANDISE DISPLAYS™

96" DISPLAY

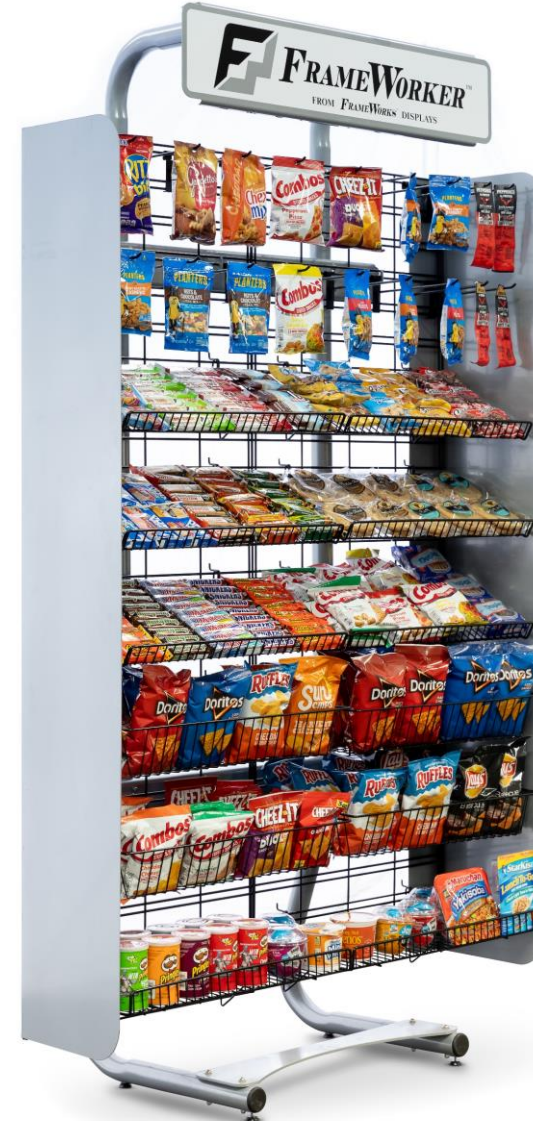




48" DISPLAY

FRAMEWORKER™

ASSISTANTS FOR RETAIL AND MERCHANDISE DISPLAYS™



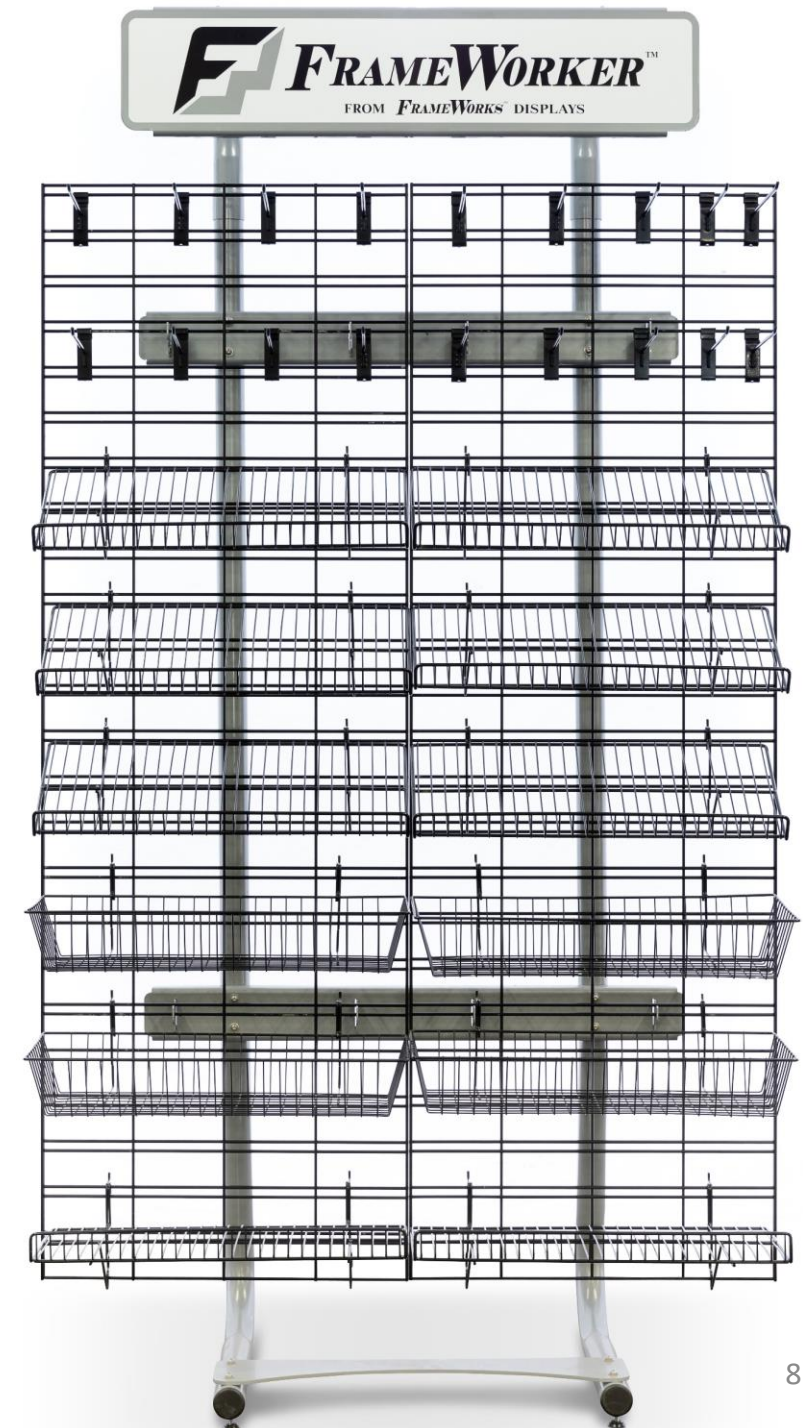
SHOWN WITH OPTIONAL SIDE PANELS

FRAMEWORKER™

ASSISTANTS FOR RETAIL AND MERCHANDISE DISPLAYS™

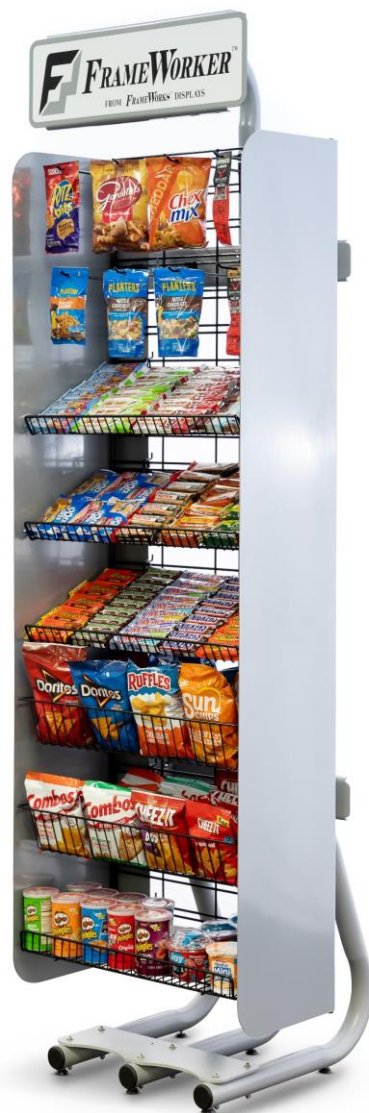


48" DISPLAY

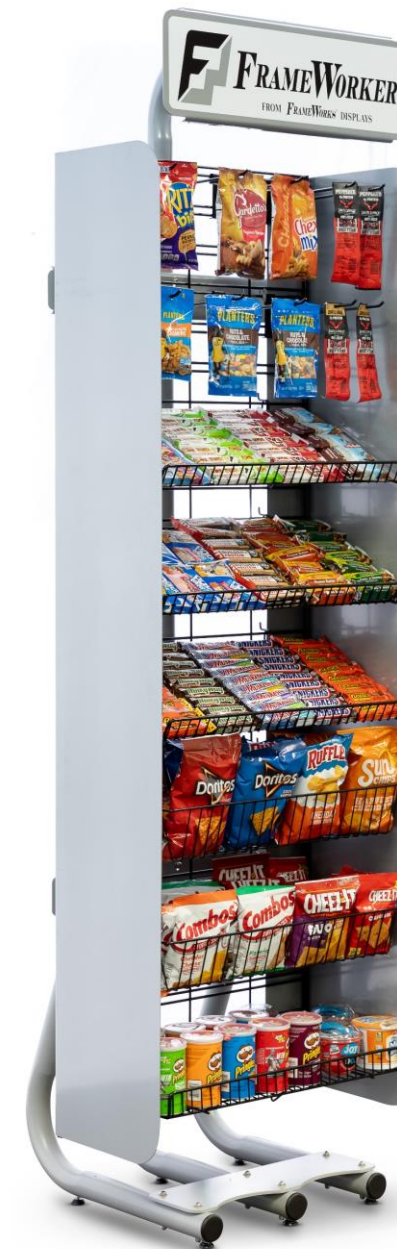
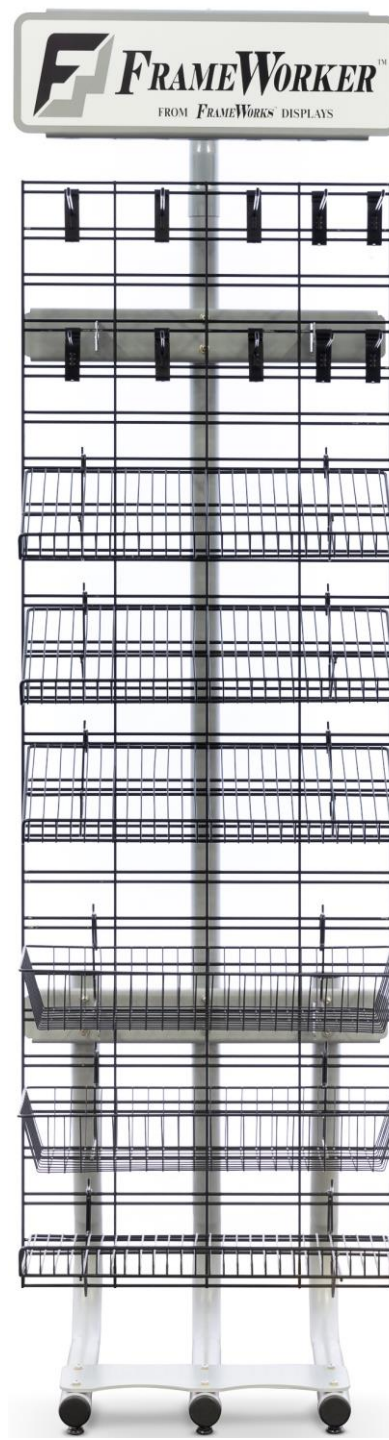


FRAMEWORKER™ MINI

ASSISTANTS FOR RETAIL AND MERCHANDISE DISPLAYS™



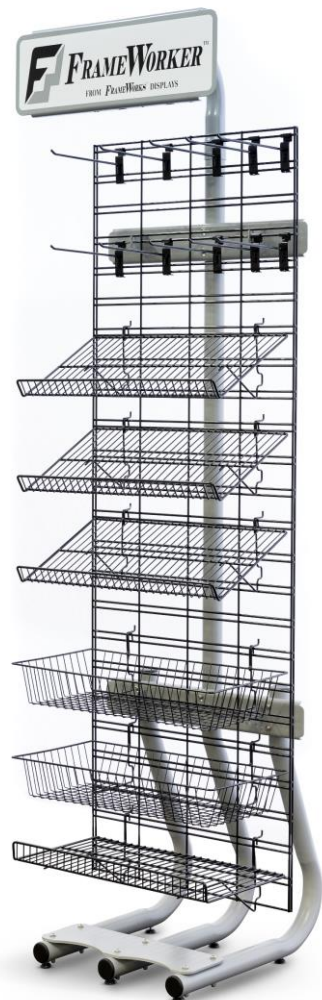
24" DISPLAY



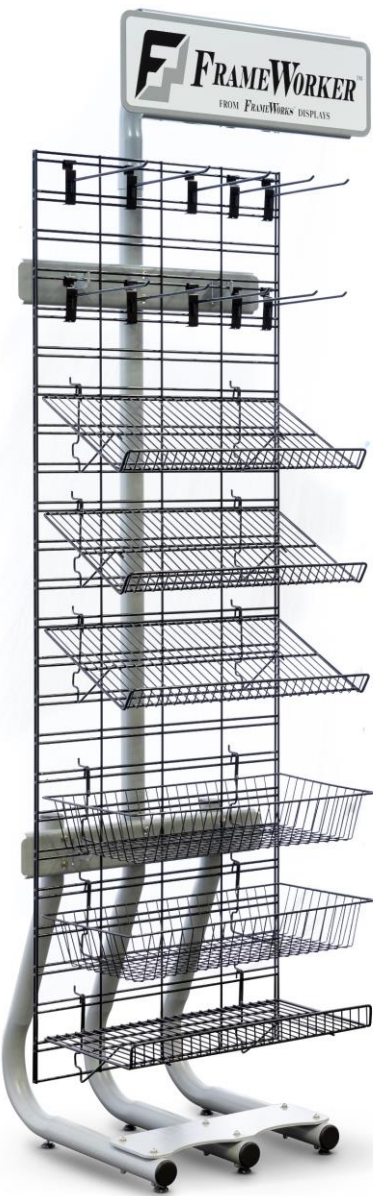
SHOWN WITH OPTIONAL SIDE PANELS

FRAMEWORKER™ MINI

ASSISTANTS FOR RETAIL AND MERCHANDISE DISPLAYS™



24" DISPLAY



FRAMEWORKER™

ASSISTANTS FOR RETAIL AND MERCHANDISE DISPLAYS™

Benefits

- Simplicity, the rack comes with everything needed to display product
 - Takes the guess work out of buying shelving for micro markets
 - No wasted space to accommodate for shelving
- Units provide the ability to use space to maximum effectiveness to sell product
 - 24" ***FRAMEWORKER™*** Mini - 12 sq ft of product display
 - 48" ***FRAMEWORKER™*** - 24 sq ft of product display
 - 96" ***FRAMEWORKER™ SENIOR*** - 48 sq ft of product display
 - Free standing
 - Quick easy assembly
 - Units are sleek and contemporary
 - Relatively light weight saves on shipping costs
 - Units can be shipped same or next day
- Units come in 2 or 3 boxes, depending on the size of the unit ordered
 - Units are reusable
- System can display product in one-foot increments with a two-foot minimum
 - Value priced compared to traditional cabinet styled systems
 - Most efficient use of breakroom space

FRAMEWORKER™

ASSISTANTS FOR RETAIL AND MERCHANDISE DISPLAYS™

Optional Graphics

Signs are shipped blank to allow the local addition of artwork/lettering. For a reasonable cost, we can provide standard or custom vinyl graphics.

Options for vinyl wrapped graphics or vinyl lettered graphics:

- Standard in stock graphics, shown on the right.
- We can do any of those shown, or you can customize your own.
- The header for the FrameWorker Mini and FrameWorker Mini 3 is 24".
- The headers are 36" long by 8" high for the 4ft units.
- The 8ft unit header is 80" long by 8" high.



Options for Plasma cut graphics:

- FrameWorks can provide plasma cut custom graphics.
- Call for quote.

FRAMEWORKER™

ASSISTANTS FOR RETAIL AND MERCHANDISE DISPLAYS™

- **What configurations will your units cover?** Using single or multiple units, you can display unlimited space in 1ft increments starting with a 2ft minimum.
- **Is silver the only color available?** We can paint numerous colors. For a small order, there would be an upcharge. For larger or continuous orders, there would be no extra charge.
- **How many people does it take to assemble and how long does it take?** While one person could assemble a unit, it is much easier with two. After your first unit, you should be able to assemble units in 10-20 minutes, not counting the time you use to place the shelves, baskets and hooks in your desired location.
- **Are the units movable?** The racks are free-standing, however they can be attached to a wall with an earthquake stability strap if desired or necessary. Empty racks can be slid out or carried for floor/wall cleaning or moving from the location.
- **How are the units packaged?** The base unit comes in one large, flat box, and the attachments come in either one or two small boxes depending on the size ordered.
- **How long does it take to get an order?** Multiple factors could influence the delivery time, but currently we are shipping in 1-2 days and delivery time is normally 2-3 days after shipping in the Continental United States. Special orders, such as custom signage could add a few of days to the ship date. We should be able to estimate delivery time at the time of the order.

FRAMEWORKER™

ASSISTANTS FOR RETAIL AND MERCHANDISE DISPLAYS™

HARDWARE

PART A
LEVELING FOOT



2' UNIT 6 EACH
4' UNIT 4 EACH
8' UNIT 6 EACH

PART B
3 ¼" HEX DRIVE SCREW



2' UNIT 8 EACH
4' UNIT 8 EACH
8' UNIT 12 EACH

PART C
LOCK NUT



2' UNIT 16 EACH
4' UNIT 16 EACH
8' UNIT 24 EACH

PART D
FLAT WASHER



2' UNIT 16 EACH
4' UNIT 16 EACH
8' UNIT 24 EACH

PART E
2 ¾" HEX DRIVE SCREW



2' UNIT 8 EACH
4' UNIT 8 EACH
8' UNIT 12 EACH

PART C
LOCK WASHER



2' UNIT 16 EACH
4' UNIT 16 EACH
8' UNIT 24 EACH

ALLEN WRENCH INCLUDED, 7/16" WRENCH NOT INCLUDED



ASSEMBLY

LAY UPRIGHT LEGS ON GROUND AS SHOWN

STEP 1- CONNECT EACH UPRIGHT LEG TO LOWER CROSS MEMBER WITH REQUIRED HARDWARE FOR THE MODEL ASSEMBLING

STEP 2- CONNECT EACH UPRIGHT LEG TO UPPER CROSS MEMBER WITH REQUIRED HARDWARE FOR THE MODEL ASSEMBLING

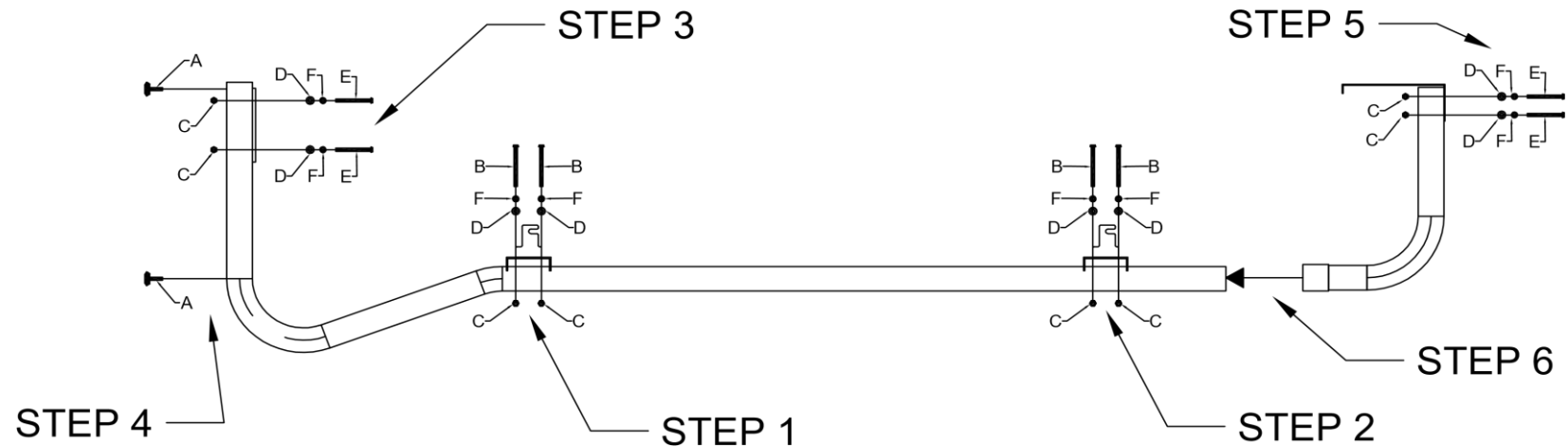
STEP 3- CONNECT COUNTER WEIGHT TO UPRIGHT LEG WITH HARDWARE AS SHOWN FOR EACH LEG

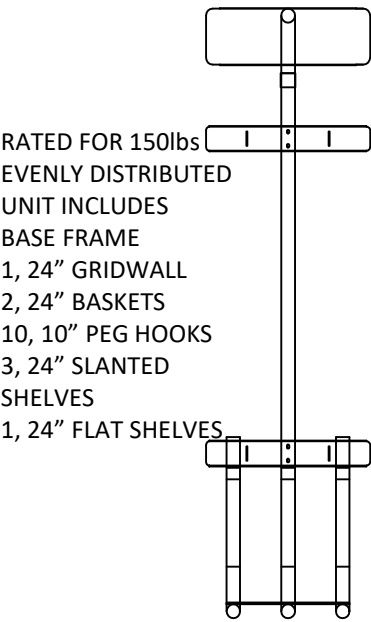
STEP 4- CONNECT LEVELING FEET TO UPRIGHT LEG WITH HARDWARE AS SHOWN FOR EACH LEG

STEP 5- CONNECT SIGN TO SIGN LEG WITH REQUIRED HARDWARE FOR THE MODEL ASSEMBLING

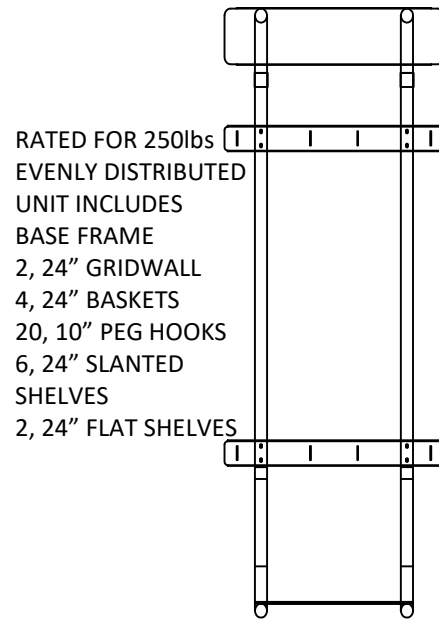
STAND UNIT IN UPRIGHT POSITION

STEP 6- SLIDE SIGN LEGS ONTO UPRIGHT LEGS AS SHOWN

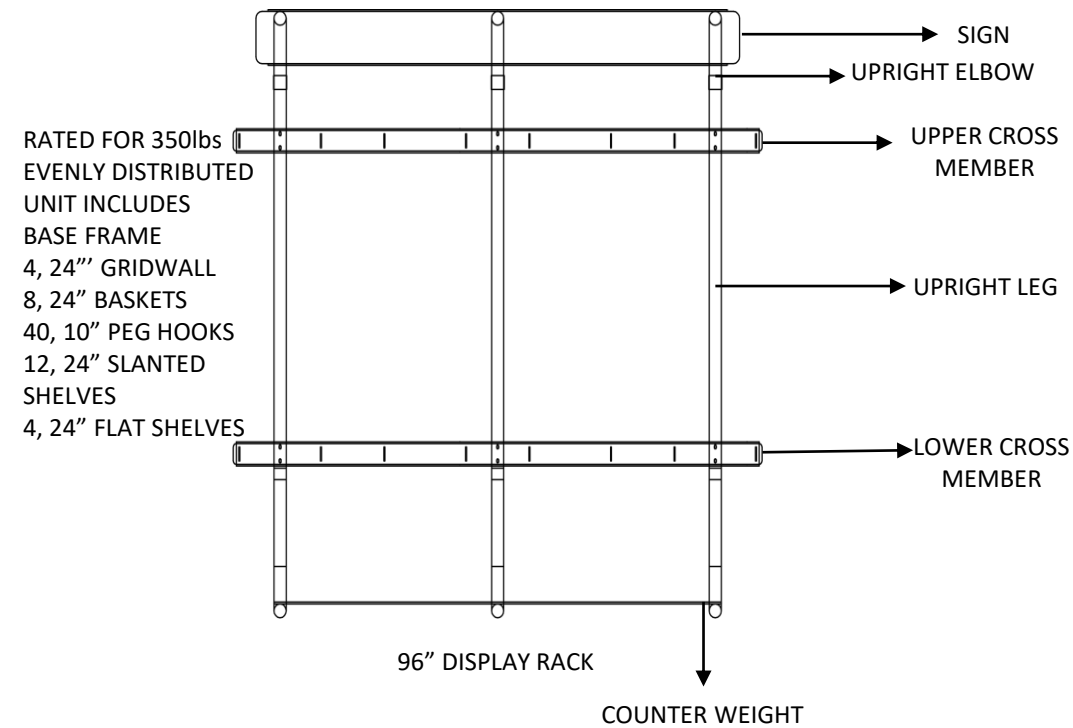


FRAMEWORKER™ MINI

24" DISPLAY RACK

FRAMEWORKER™

48" DISPLAY RACK

FRAMEWORKER™ SENIOR

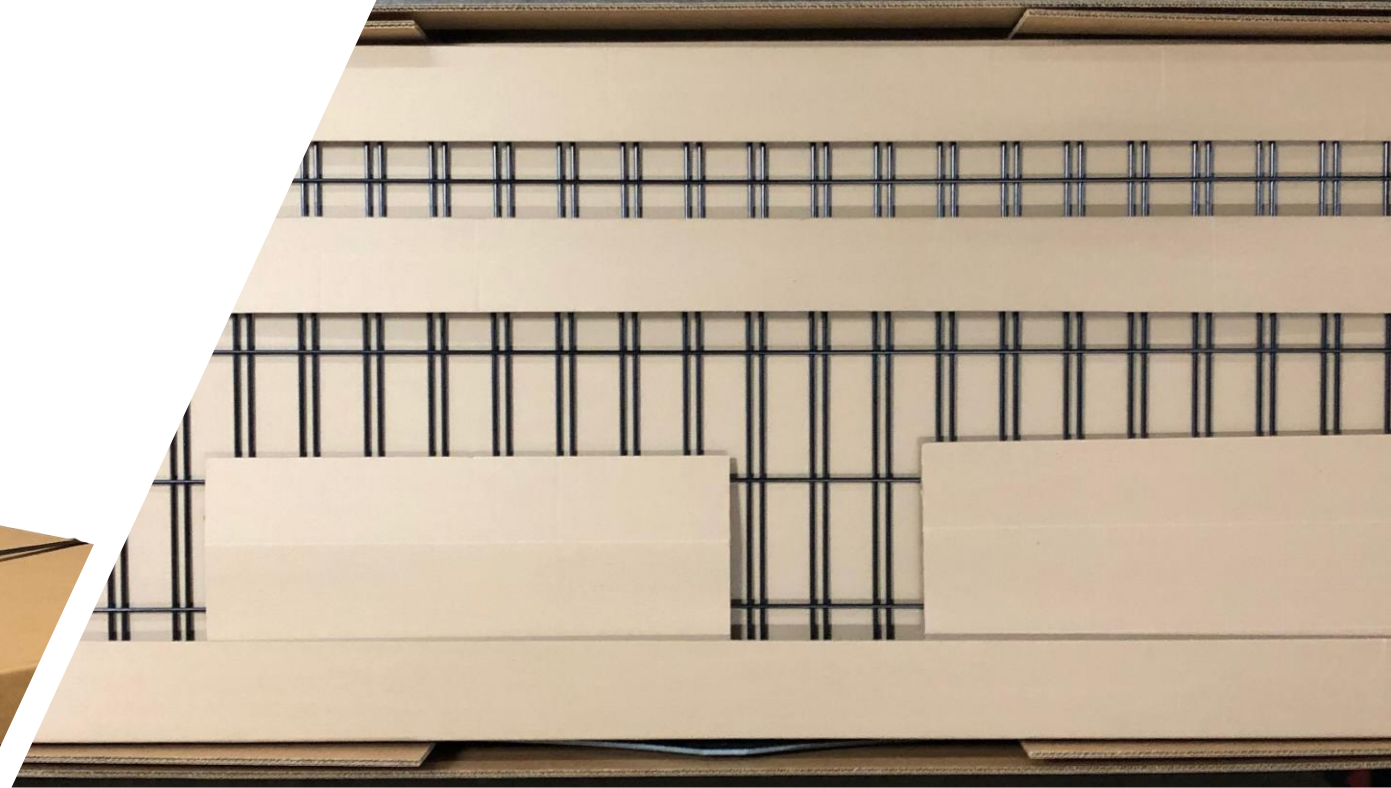
96" DISPLAY RACK

OPTIONAL FRAMEWORKER™ EQUIPMENT:

- 3FT CONVERSION KIT THAT MOUNTS ON THE **FRAMEWORKER™ MINI**
- MULTIPURPOSE SHELF FOR COFFEE/KIOSK STATION
- DVR HIDE MOUNTS UNDER MULTIPURPOSE SHELF
- SIDEPANELS; USED TO SEPARATE 2FT SECTIONS OF GRIDWALL OR END CAPS

LEGAL NOTICE: The products shown are Patent Pending. FrameWorks, FrameWorker, and "Assistants for Merchandise and Retail Display" are the exclusive trademarks of FrameWorks Displays and that it actively and aggressively enforces its intellectual property right to the fullest extent of the law. Copyright 2019 All Rights Reserved.







- **Legal Notice:** The various products depicted are Patent Pending in US and Foreign jurisdictions. All rights reserved. All product names, whether or not appearing in large print or with the trademark symbol, are trademarks of Frameworks, LLC (dba FrameWorks Displays). Please be advised that FrameWorks Displays actively and aggressively enforces its intellectual property rights to the fullest extent of the law. The following is a partial list of its trademarks: FrameWorker, FrameWorks and “Assistants for Merchandise and Retail Display”. Copyright 2019 All Rights Reserved

The ***FRAMEWORKER™***

From



2304 Sampson St.
P.O. Box 102
Muscatine, IA 52761
563-263-9999
833-211-5624
www.frameworksdisplays.com

