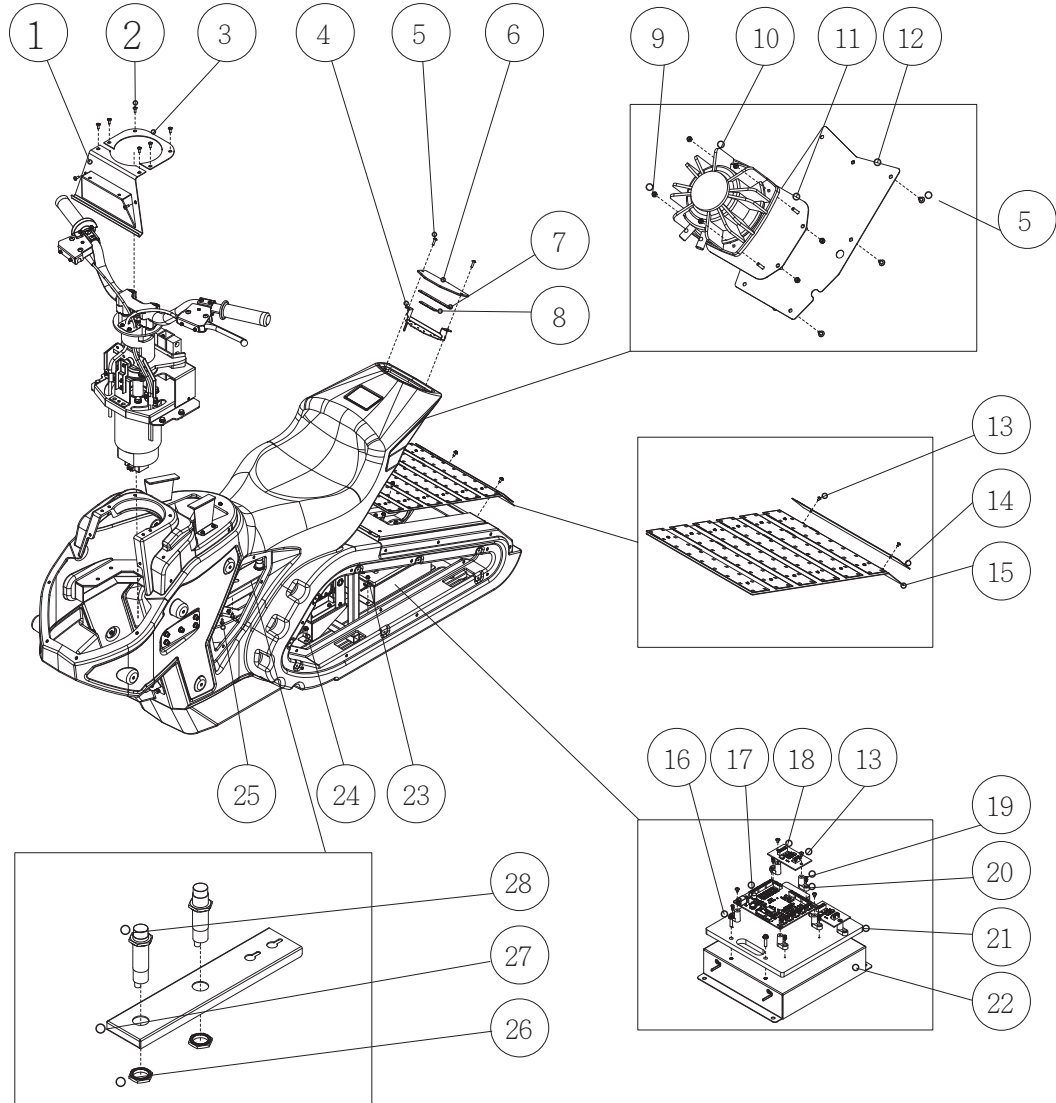


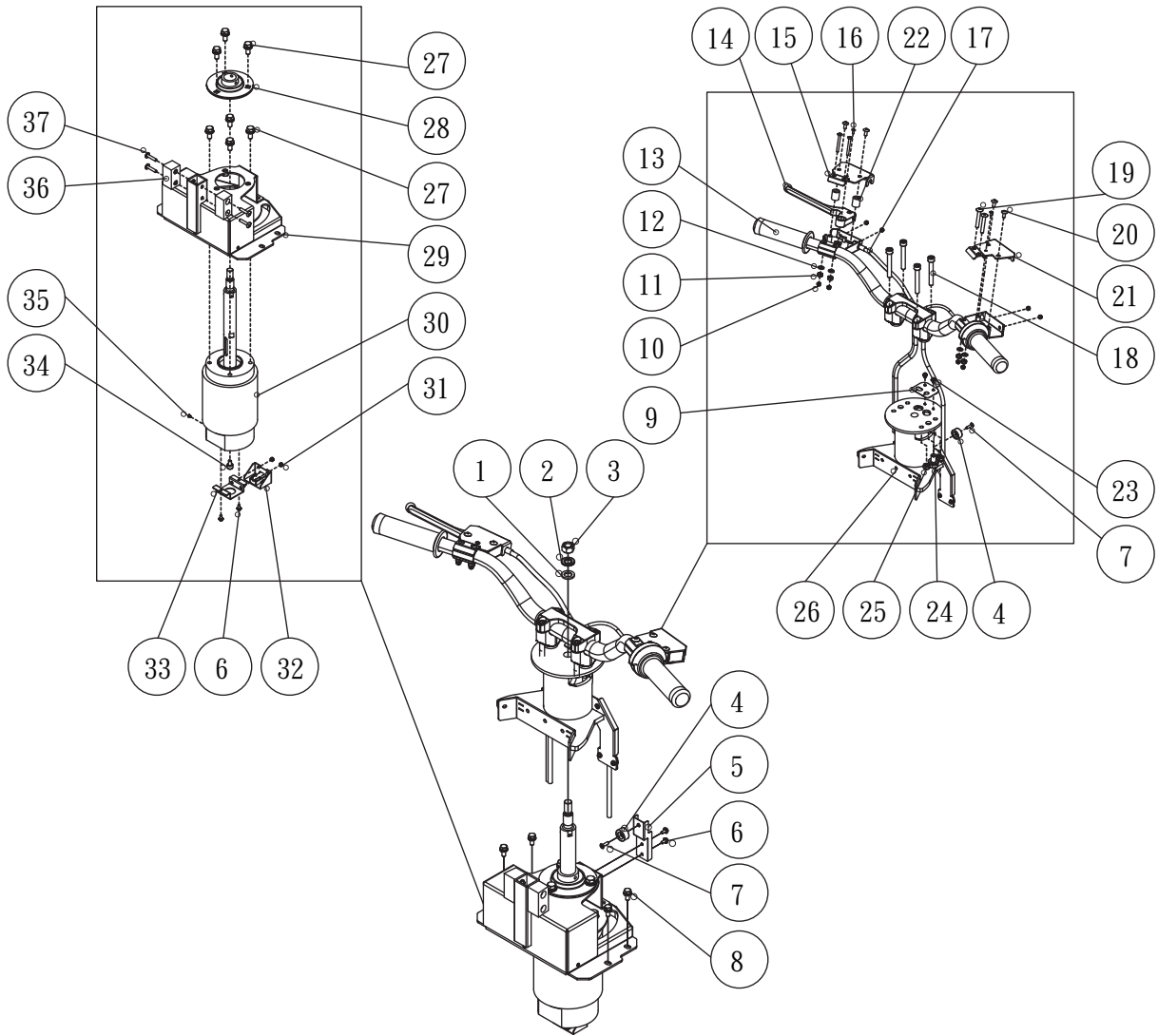
5.3.12 Explosion diagrams of the vehicle



PARTS LIST			
ITEM	TITLE	PART NUMBER	QTY
1	steering handle bar cover - A	AMA-20-31610	1
2	Screw M4X12L	SCR_THSHS-N-M4X12L	8
3	steering handle bar cover - B	AMA-20-31620	1
4	tail light bracket	AMA-20-31820	1
5	Screw M4X15L	SCR_THSHS-N-M4X15L	9
6	tail light acrylic	AMA-20-31810	16
7	LED Light Strip 100mm	LED-100MM	1
8	LED Light Strip 50mm	LED-50MM	1
9	Nut M4	NYLON_NUT-M4	8
10	vibration speaker	NFS_SPEAKER-4INCH	1
11	vibration speaker fixing plate	AMA-20-31210	1
12	reflective PVC	AMA-20-11118-PVC	1
13	Screw M3X5L	SCR_THS-N-M3X5L	22
14	track light board	PCB	7
15	track light board fixing plate	AMA-20-31710	1

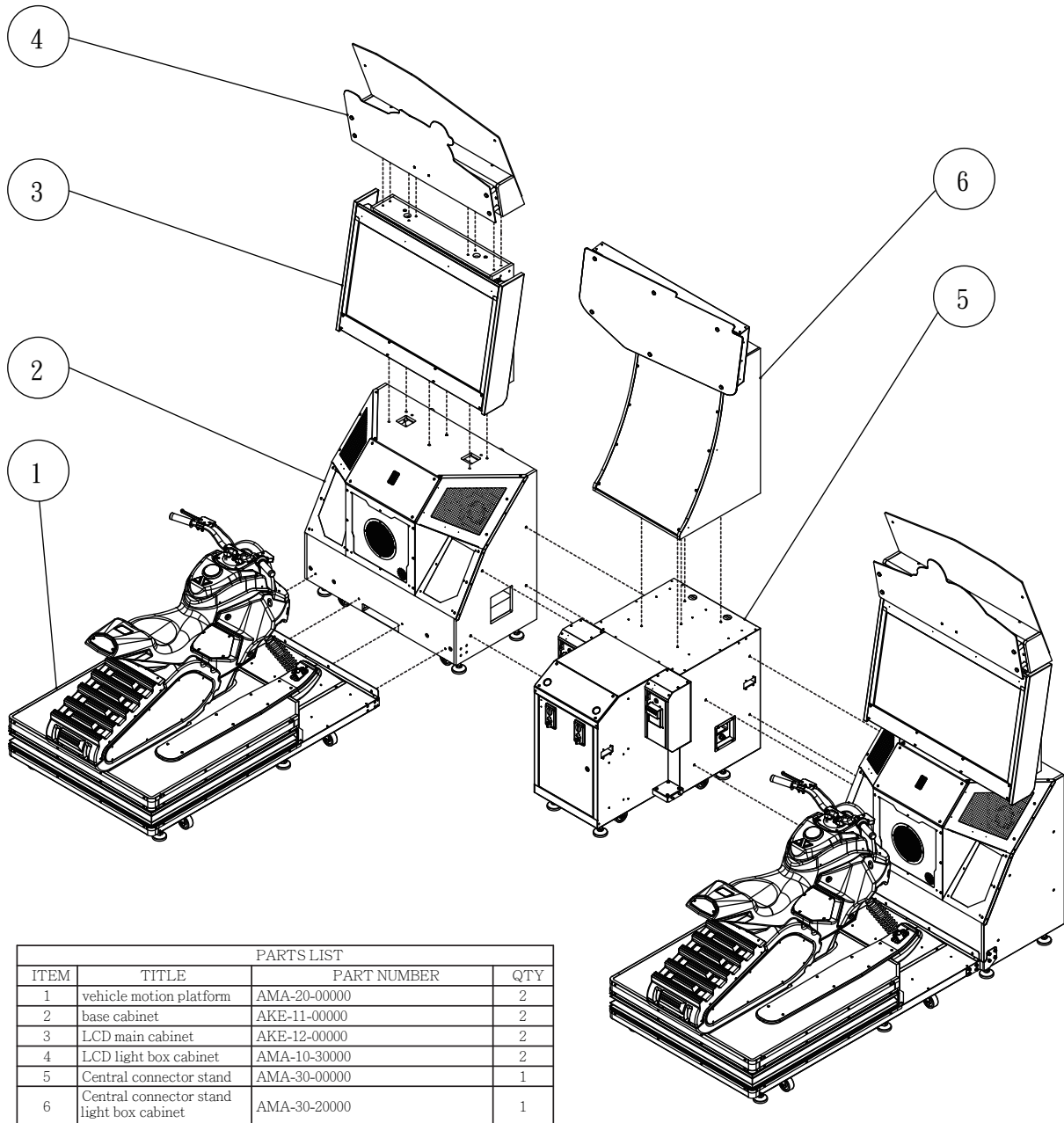
PARTS LIST			
ITEM	TITLE	PART NUMBER	QTY
16	Screw M4X20L	SCR_PHS-NC-M4X20L	2
17	MU - LED control panel	MU-1191-00	1
18	LED driver board	NP-1249-00	2
19	Screw A3X8L	SCR_FLAT-A3X8L	8
20	Circuit board L standoff fixed clips	L_TYPE	8
21	MU base board	AMA-20-31920	1
22	MU base board fixing plate	AMA-20-31910	1
23	Screw M4X12L	SCR_PHS-NC-M4X12L	4
24	Screw M5X15L	SCR_PHS-NC-M5X15L	3
25	Screw M4X10L	SCR_THS-N-M4X10L	2
26	sensor nut	LJC18A3-B-Z-BX-NUT	2
27	sensor bracket	AMA-20-31410	1
28	sensor	LJC18A3-B-Z-BX	2

Maintenance and Repair



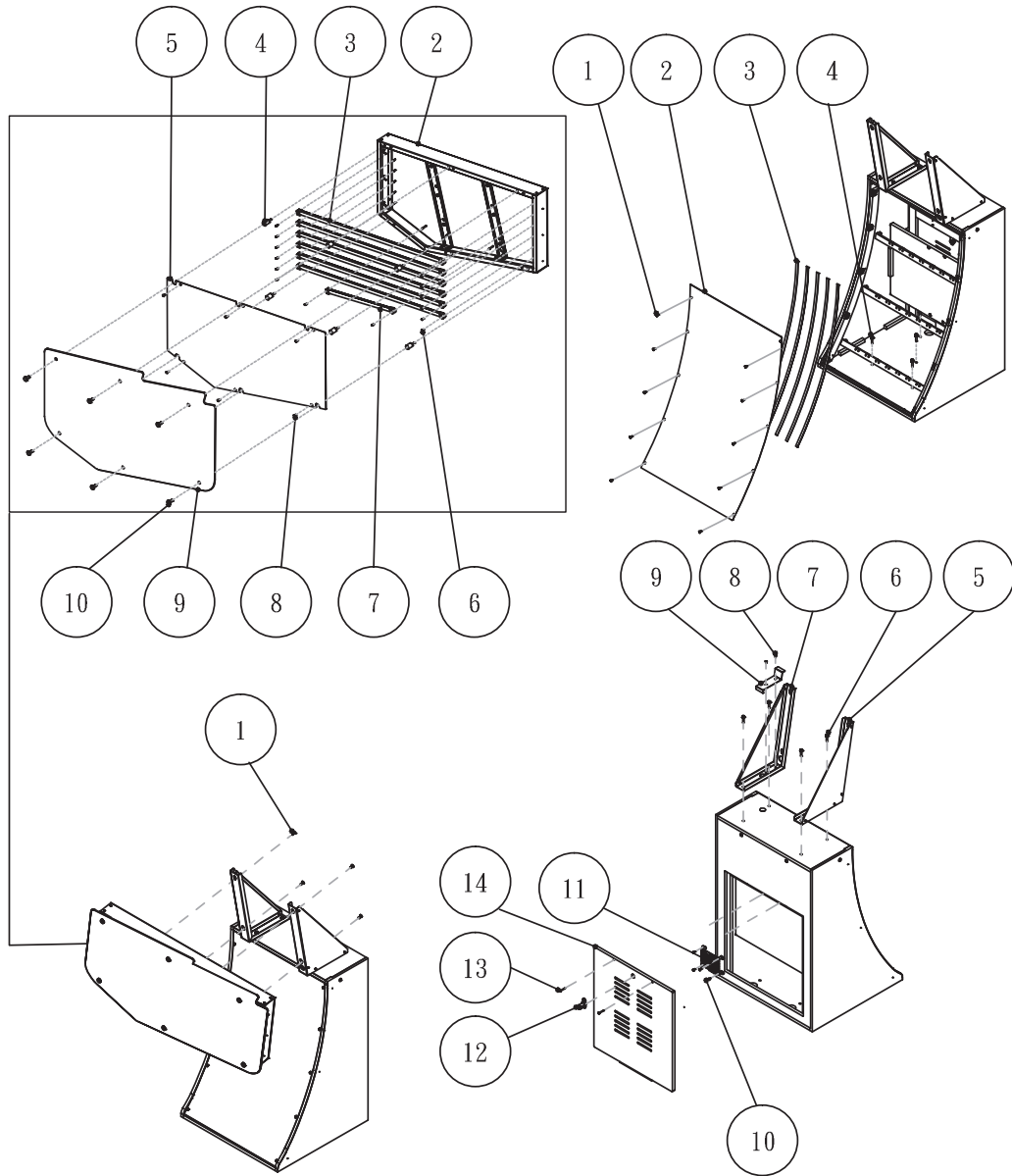
PARTS LIST			
ITEM	TITLE	PART NUMBER	QTY
1	Wasser M12	WASHER_D12	1
2	Spring washer M12	WASHER_S-D12	1
3	Nut M12	HEX_NUT-M12	1
4	magnet	MAGNET-20X10MM	2
5	magnet fixing bracket	AMA-20-31531	1
6	Screw M4X10L	SCR_PHS-NC-M4X10L	4
7	Screw M4X15L	SCR_FHS-M4X15L	2
8	Screw M6X15L	SCR_HS-NC-M6X15L	4
9	PVC	AMA-20-31525-PVC	1
10	Nut M6	FNT6	4
11	Nut M6	NYLON_NUT-M6	4
12	Wasser M6	WASHER_D6	4
13	handle module	AMA-20-31522	1
14	brake lever	AMA-20-31523-3_01	1
15	cover - L	AMA-20-31523-4_MIR	5
16	Screw M3X8L	SCR_THSHS-N-M3X8L	2
17	steel rope module	PIPE	1
18	Screw M8X60L	SCR_HSHS-N-M8X60L	4

ITEM	TITLE	PART NUMBER	QTY
19	Screw M6X40L	SCR_THSHS-N-M6X40L	4
20	Screw M5X12L	SCR_THSHS-N-M5X12L	4
21	cover - R	AMA-20-31523-4	1
22	PU - A	AMA-20-31523-2	2
23	Screw M4X8L	SCR_PHS-NC-M4X8L	2
24	Screw M10X20L	SCR_HS-NC-M10X20L	2
25	Nut M8	NYLON_NUT-M8	4
26	handle base	AMA-20-31521	1
27	Screw M8X20L	SCR_HS-NC-M8X20L	7
28	bearing (PFL205 -d25)	PFL205	1
29	motor base	AMA-20-31511	1
30	motor	MOTOR_112ZY100-40_ASM_4	1
31	Nut M4	NYLON_NUT-M4	6
32	sensor magnet module - 1	AMA-20-31512-2	1
33	sensor magnet module bracket	AMA-20-31512-1	1
34	sensor magnet module - 0	MAGENT-D10	1
35	Screw M3X5L	SCR_PHS-N-M3X5L	1
36	PU - B	AMA-20-31513-25D	2
37	Screw M5X25L	SCR_THSHS-N-M5X25L	4



PARTS LIST			
ITEM	TITLE	PART NUMBER	QTY
1	vehicle motion platform	AMA-20-00000	2
2	base cabinet	AKE-11-00000	2
3	LCD main cabinet	AKE-12-00000	2
4	LCD light box cabinet	AMA-10-30000	2
5	Central connector stand	AMA-30-00000	1
6	Central connector stand light box cabinet	AMA-30-20000	1

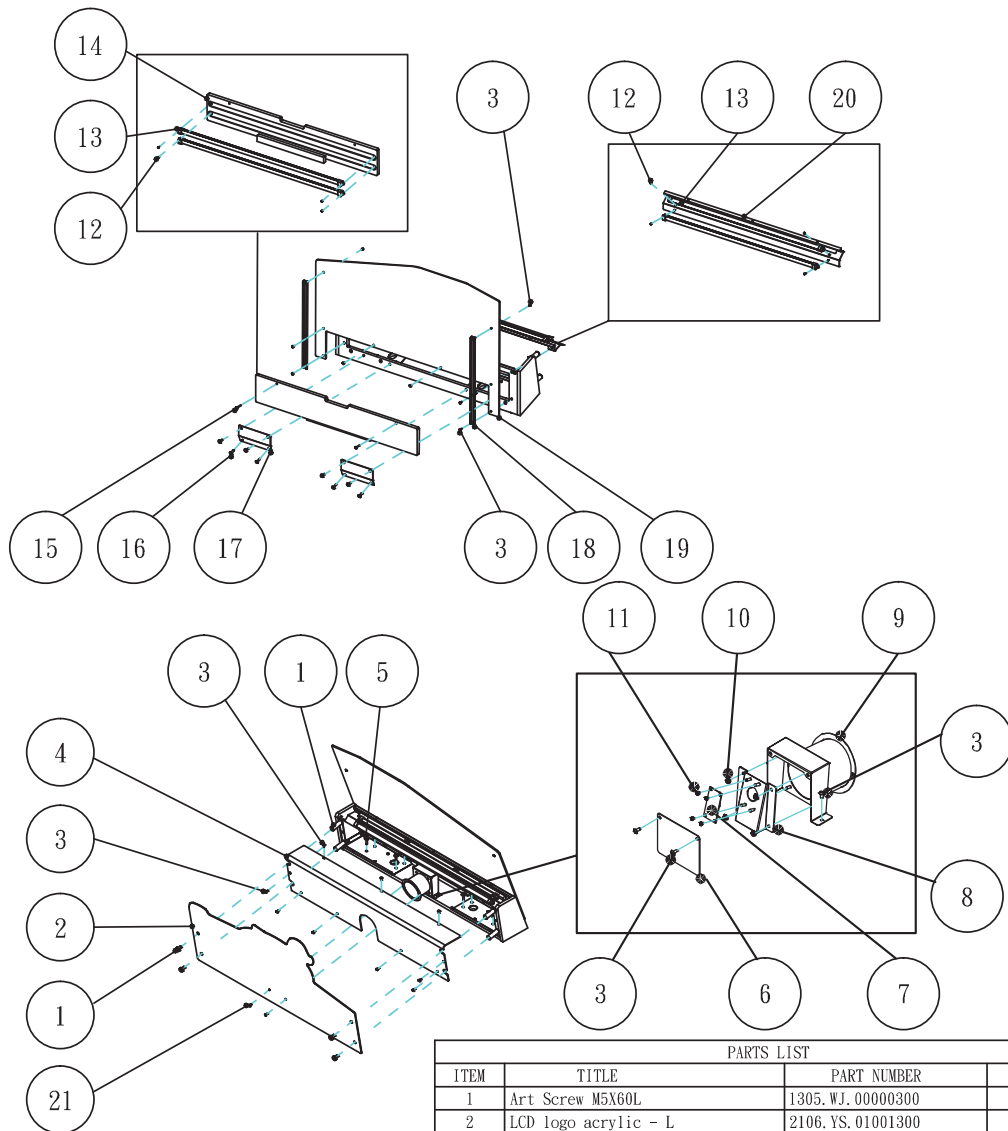
Maintenance and Repair



PARTS LIST			
ITEM	TITLE	PART NUMBER	QTY
1	Screw M6X15L	0000.LS.001061600	4
2	logo name light box	2106.WJ.00008300	1
3	LED hard rigid tube bar lamp (Transparent cover) 900mm	2106.PJ.900110152	6
4	Art Screw M5X30L	1305.WJ.00000300	6
5	logo name light box PVC	2106.YS.01001200	1
6	Screw M3X8L	0000.LS.001030800	14
7	LED hard rigid tube bar lamp (Transparent cover) 400mm	2106.PJ.420100086	1
8	Screw M4X8L	0000.LS.001040800	6
9	logo name acrylic	2106.YS.01001101	1
10	Art screw cap	0000.LS.036061614	

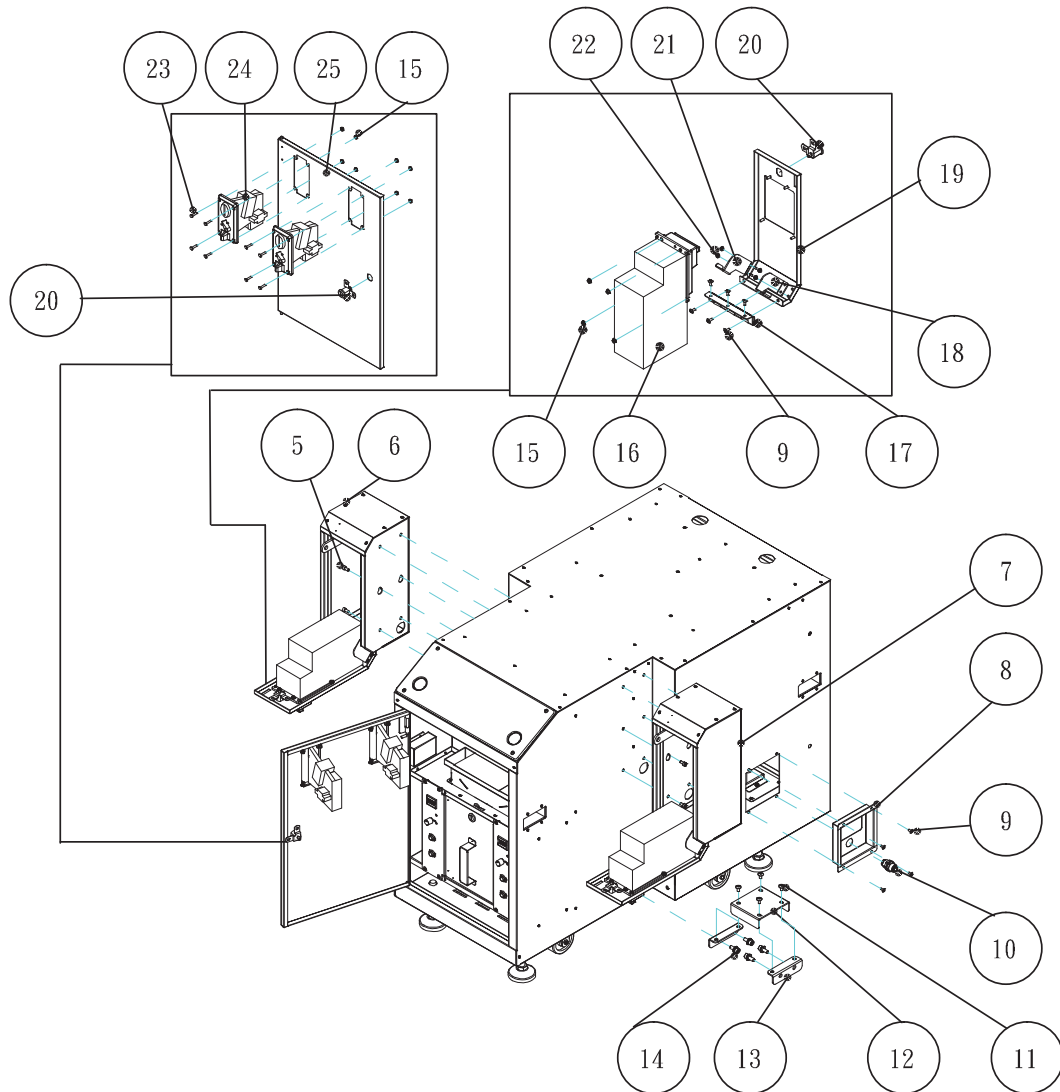
PARTS LIST			
ITEM	TITLE	PART NUMBER	QTY
1	Screw M6X15L	0000.LS.001061600	10
2	Central connector stand light box acrylic	2106.VS.00003901	1
3	LED Light Strip 800mm	1902.PJ.505020950	5
4	Screw M6X30L	0000.LS.001063000	5
5	logo light box bracket - R	2106.WJ.00008000	1
6	Screw M6X30L	0000.LS.001063000	4
7	logo light box bracket - L	2106.WJ.00008100	1
8	Screw M3X8L	0000.LS.001040800	2
9	wire hole cover	2106.WJ.00008200	1
10	MU - LED control panel	MU-1191-00	1
11	Screw M4X10L	0000.LS.001041200	2

Maintenance and Repair



PARTS LIST			
ITEM	TITLE	PART NUMBER	QTY
1	Art Screw M5X60L	1305.WJ.00000300	4
2	LCD logo acrylic - L	2106.YS.01001300	1
3	Screw M4X10L	0000.LS.001041200	21
4	LCD light box curved acrylic	2106.YS.01001500	1
5	Screw M6X30L	0000.LS.001063000	8
6	camera module light shield plate	AKE-13-33000	1
7	camera circuit board	CAMERA-MIT-AA37HBA-AWA	1
8	camera bracket	2106.WJ.00009600	1
9	camera bracket frame	1902.WJ.00005500	1
10	Nut M4	0000.LS.327040013	4
11	Screw M3X6L	0000.LS.001030600	4
12	Screw M3X8L	0000.LS.001030800	8
13	LED hard rigid tube bar lamp (Transparent cover) 800mm	2106.PJ.820100014	4
14	LCD light box maintenance door	BH2106-MC0800-00	1
15	Screw M4X30L	0000.LS.001043000	2
16	Screw M6X20L	0000.LS.001062000	8
17	LCD light box fixing metal plate	2106.WJ.00008700	2
18	PVC foam board bracket	2106.WJ.00009100	2
19	LCD light box PVC foam board	2106.YS.01002300	1
20	LCD light strip bracket	2106.PJ.900110152	1
21	Screw M4X10L	0000.LS.001041200	2

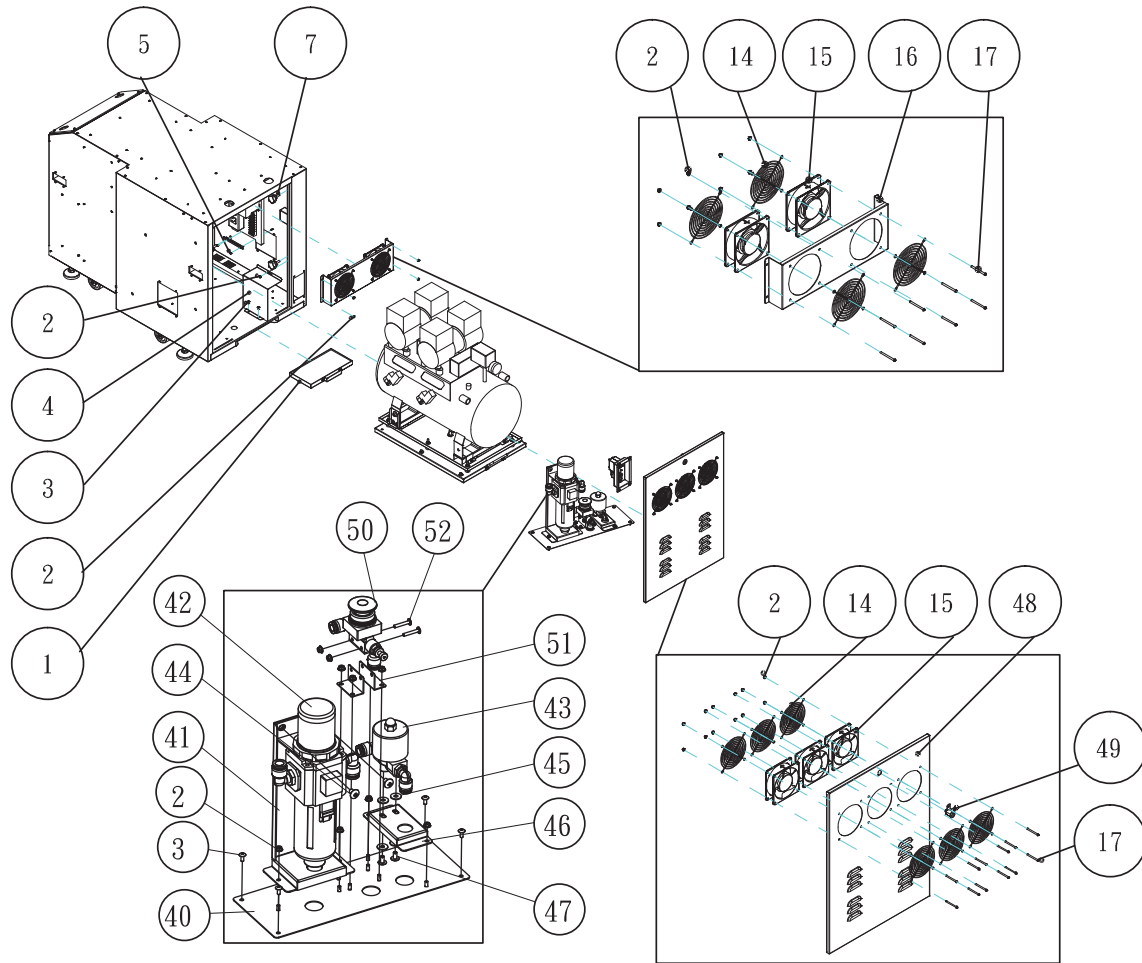
Maintenance and Repair



PARTS LIST			
ITEM	TITLE	PART NUMBER	QTY
1	3 inch leg leveler	0000.PJ.13000405	4
2	leg leveler sheet plate	1902.WJ.00006800	4
3	leg leveler	0000.PJ.631161000	4
4	Screw M8X20L	0000.LS.010082000	32
5	Screw M6X12L	0000.LS.010061200	12
6	bill acceptor module frame (left)	2106.WJ.00013500	1
7	bill acceptor module frame (right)	2106.WJ.00013600	1
8	air compressor tube fixing metal plate	1902.WJ.00007300	2
9	Screw M4X10L	0000.LS.001041200	32
10	Straight connector	1902.PJ.01001400	2
11	Screw M6X12L	0000.LS.010061200	8
12	Cabinet connection bracket A cover	1902.WJ.00011200	2
13	Cabinet connection bracket A	1902.WJ.00008700	4
14	Screw M8X20L	0000.LS.010082000	8
15	Nut M4	0000.LS.327040013	20
16	bill acceptor	SCR_THS-N-M6X20L	2
17	hinge	2106.WJ.00013800	2
18	bill acceptor maintenance part -1 (right)	2106.WJ.00013900	2
19	bill acceptor maintenance door	2106.WJ.00013700	2

PARTS LIST			
ITEM	TITLE	PART NUMBER	QTY
20	Lock	0000.PJ.651160080	3
21	bill acceptor maintenance part -2 (left)	2106.WJ.00014000	2
22	Nut M4	0000.LS.327040013	12
23	Screw M4X20L	0000.LS.001042000	8
24	Coin acceptor	0000.LS.001042000	2
25	front connector stand maintenance door	2106.WJ.00010400	1
26	motion stop button	2106.PJ.02001000	2
27	motion stop button bracket	2106.WJ.00009200	2
28	coin funnel	1902.WJ.00007100	1
29	Counter	0000.DZ.742030600	2
30	Volume	1210.BC.A00000001	2
31	Control panel button	0000.SJ.523124516	4
32	Coin Box	1902.WJ.00007200	1
33	Coin Box Lock	0000.PJ.651161180	1
34	Control panel sheet plate	0000.LS.001042000	2
35	Card reader	SMART_CARD_READER_WLX-285	2
36	Card reader bracket	2106.WJ.00009800	2
37	motion stop button acrylic	2106.YS.01001001	1
38	Screw M4X12L	0000.LS.03040121	4

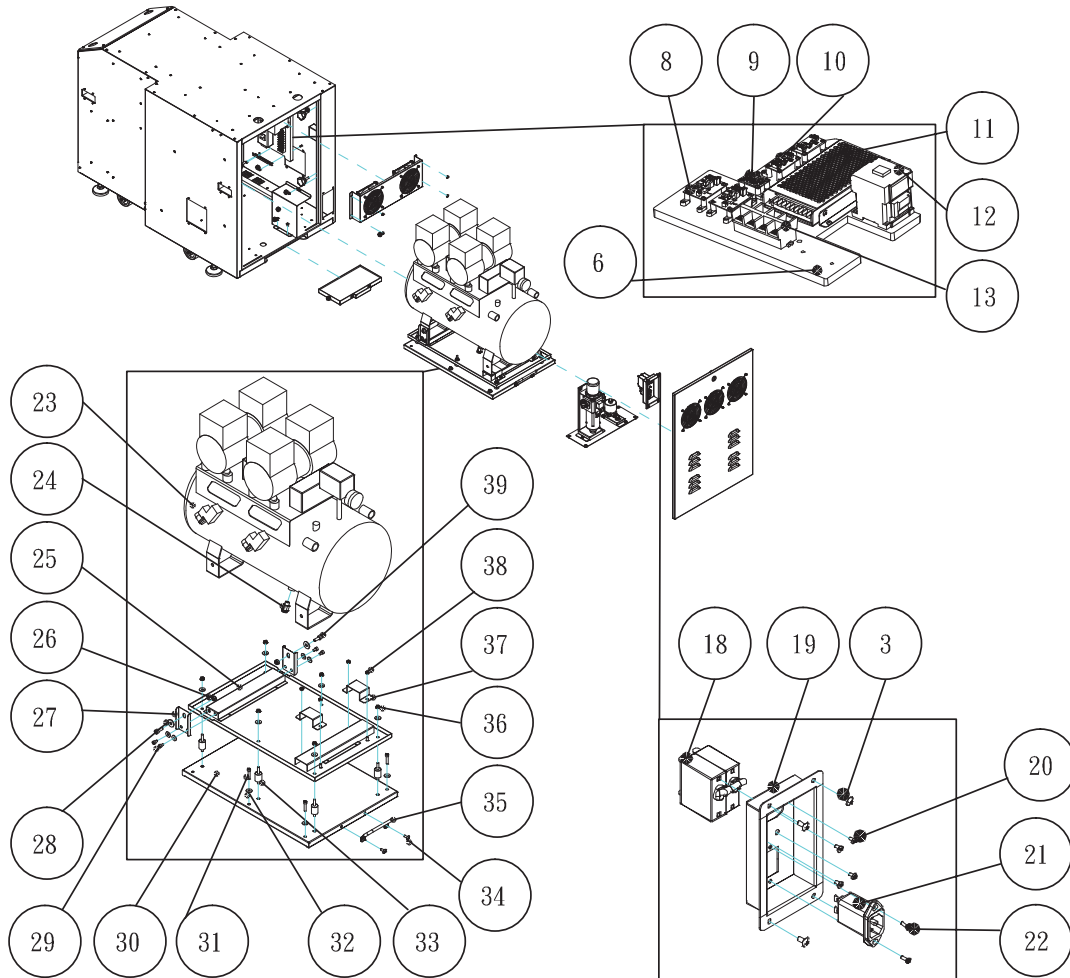
Maintenance and Repair



PARTS LIST			
ITEM	TITLE	PART NUMBER	QTY
1	water collection tray	1902.WJ.00007900	1
2	Nut M4	0000.LS.327040013	33
3	Screw M4X10L	0000.LS.001041000	10
4	power in protection cover	1902.WJ.00007600	1
5	Nut M4	0000.LS.327040013	2
6	Control board board	BH1902-MC0700-01	1
7	Screw M6X25L	0000.LS.135062051	8
8	N-type switch board OC	1902.DZ.07000445	2
9	Power detection board NI-A	1902.DZ.07000443	1
10	Motor drive plate	1404.BC.C01000001	2
11	POWER	0000.JD.1LRS35012	1
12	AC connection	1902.JD.00003300	1
13	extension cord socket	POWER-S_4HOLE	1
14	Fan guard	0000.PJ.681900510	10
15	Fan	0000.PJ.08000500	5
16	Fan holder	1902.WJ.00006900	1
17	Screw M4X50L	0000.LS.001045000	20
18	Circuit breaker	00001000	1
19	power in box	1902.WJ.00007500	1
20	Screw M3X6L	0000.LS.001030600	4
21	line filter socket	1902.JD.00000100	1
22	Screw M3X10L	0000.LS.001031000	2
23	Air Compressor	1902.JD.00002000	1
24	Straight connector	1902.PJ.01001200	1
25	Air Compressor stand	1902.WJ.00008300	1
26	Nut M6	0000.LS.326060012	2

PARTS LIST			
ITEM	TITLE	PART NUMBER	QTY
27	Air compressor fixing metal plate - A	1902.WJ.00008500	2
28	Wasser M6	0000.LS.133061612	2
29	Screw M6X10L	0000.LS.010061200	4
30	Air compressor base	1902.WJ.00008600	1
31	Screw M6X30L	0000.LS.001063000	4
32	Wasser M6	0000.LS.133061612	14
33	Rubber shock absorber	1002.PJ.00000600	6
34	Screw M6X15L	0000.LS.001061600	2
35	handle grip	1128.PJ.00001000	1
36	Nut M6	0000.LS.326060012	6
37	Air compressor fixing metal plate - B	1902.WJ.00008400	2
38	Nut M6	0000.LS.326060012	4
39	Screw M6X20L	0000.LS.001062000	2
40	drain valve / pressure regulating valve fixing metal plate	1902.WJ.00008000	1
41	pressure regulating valve bracket	1902.WJ.00008200	1
42	pressure regulating valve	1902.PJ.01000100	1
43	drain valve	1902.JD.00000700	1
44	Screw M6X10L	0000.LS.010061200	2
45	Wasser M5	1902.PJ.00004000	4
46	drain valve bracket	1902.WJ.00008100	1
47	Screw M5X6L	0000.LS.001050600	2
48	connector stand maintenance door	1902.WJ.00007800	1
49	Lock	0000.PJ.651260080	1
50	Manual Valve		1
51	Fixing Bracket		1
52	Screw M4x25L		2

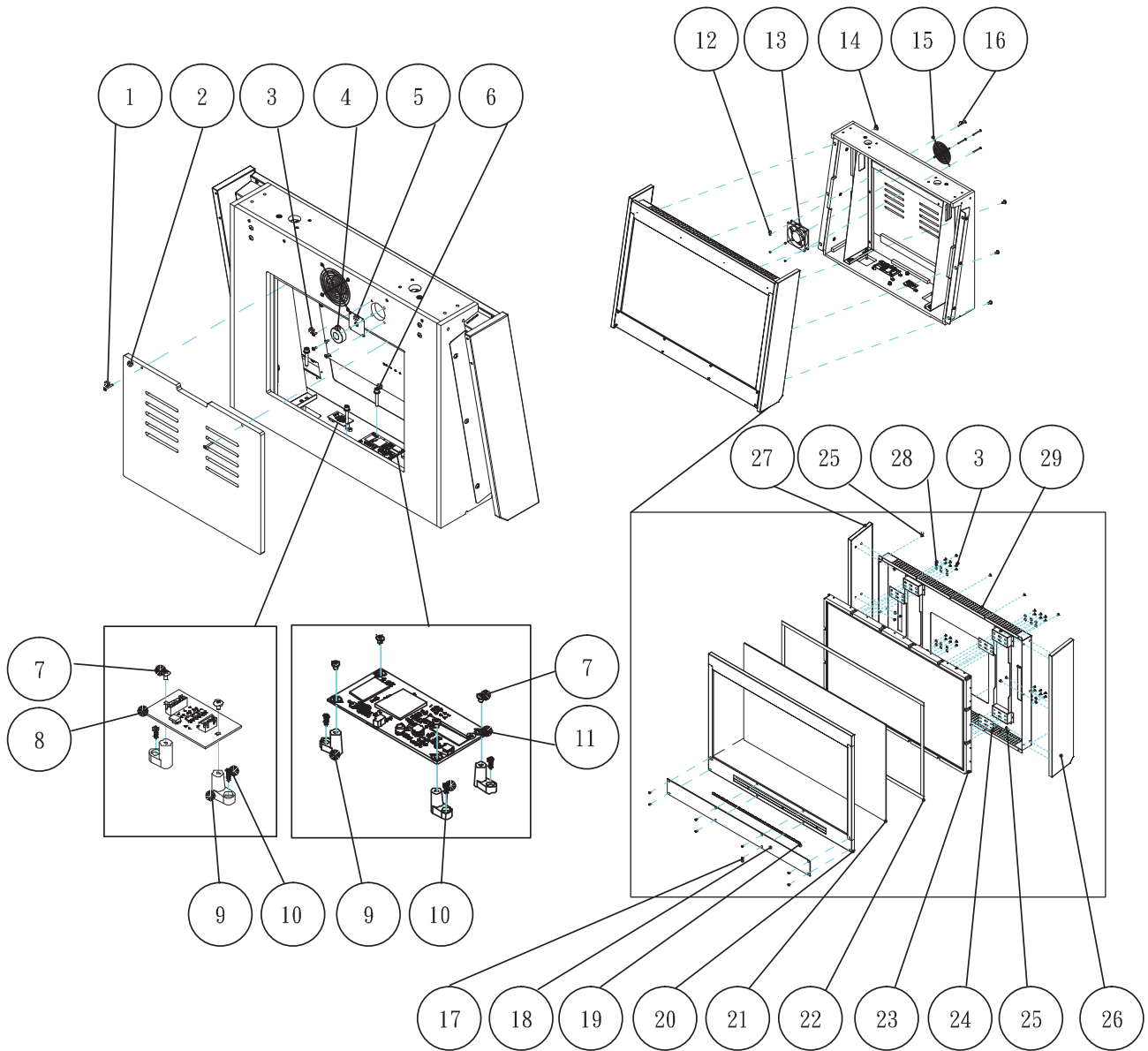
Maintenance and Repair



PARTS LIST			
ITEM	TITLE	PART NUMBER	QTY
1	water collection tray	1902.WJ.00007900	1
2	Nut M4	0000.LS.327040013	27
3	Screw M4X10L	0000.LS.001041000	10
4	power in protection cover	1902.WJ.00007600	1
5	Nut M4	0000.LS.327040013	2
6	Control board board	BH1902-MC0700-01	1
7	Screw M6X25L	0000.LS.135062051	8
8	N-type switch board OC	1902.DZ.07000445	2
9	Power detection board NI-A	1902.DZ.07000443	1
10	Motor drive plate	1404.BC.C01000001	2
11	POWER	0000.JD.1LRS35012	1
12	AC connection	1902.JD.00003300	1
13	extension cord socket	POWER-S_4HOLE	1
14	Fan guard	0000.PJ.681900510	10
15	Fan	0000.PJ.08000500	5
16	Fan holder	1902.WJ.00006900	1
17	Screw M4X50L	0000.LS.001045000	20
18	Circuit breaker	00001000	1
19	power in box	1902.WJ.00007500	1
20	Screw M3X6L	0000.LS.001030600	4
21	line filter socket	1902.JD.00000100	1
22	Screw M3X10L	0000.LS.001031000	2
23	Air Compressor	1902.JD.00002000	1
24	Straight connector	1902.PJ.01001200	1
25	Air Compressor stand	1902.WJ.00008300	1
26	Nut M6	0000.LS.326060012	2

PARTS LIST			
ITEM	TITLE	PART NUMBER	QTY
27	Air compressor fixing metal plate - A	1902.WJ.00008500	2
28	Wasser M6	0000.LS.133061612	2
29	Screw M6X10L	0000.LS.010061200	4
30	Air compressor base	1902.WJ.00008600	1
31	Screw M6X30L	0000.LS.001063000	4
32	Wasser M6	0000.LS.133061612	14
33	Rubber shock absorber	1002.PJ.00000600	6
34	Screw M6X15L	0000.LS.001061600	2
35	handle grip	1128.PJ.00001000	1
36	Nut M6	0000.LS.326060012	6
37	Air compressor fixing metal plate - B	1902.WJ.00008400	2
38	Nut M6	0000.LS.326060012	4
39	Screw M6X20L	0000.LS.001062000	2
40	drain valve / pressure regulating valve fixing metal plate	1902.WJ.00008000	1
41	pressure regulating valve bracket	1902.WJ.00008200	1
42	pressure regulating valve	1902.PJ.01000100	1
43	drain valve	1902.JD.00000700	1
44	Screw M6X10L	0000.LS.010061200	2
45	Wasser M5	1902.PJ.00004000	4
46	drain valve bracket	1902.WJ.00008100	1
47	Screw M5X6L	0000.LS.001050600	2
48	connector stand maintenance door	1902.WJ.00007800	1
49	Lock	0000.PJ.651260080	1

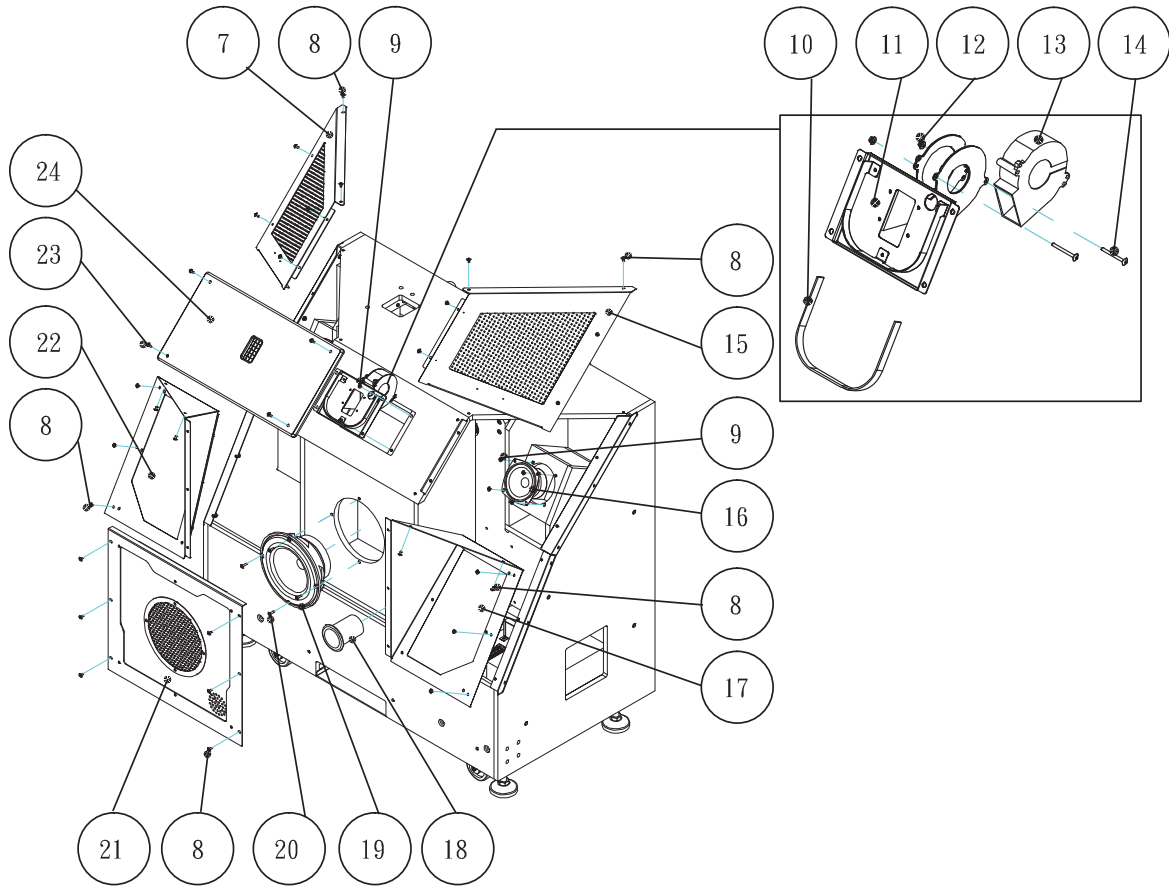
Maintenance and Repair



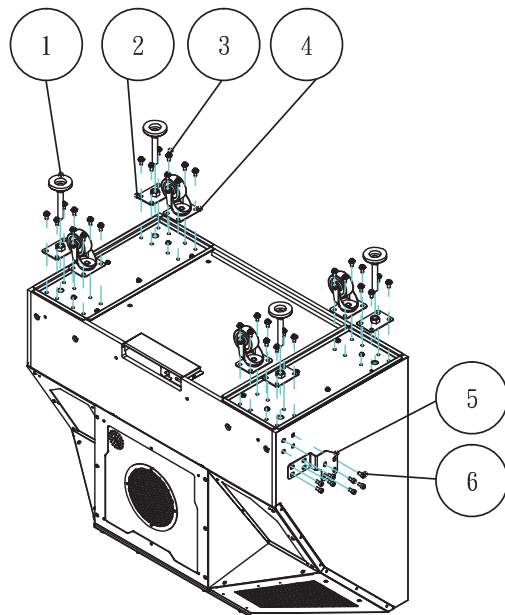
PARTS LIST			
ITEM	TITLE	PART NUMBER	QTY
1	Screw M4X30L	0000.LS.005043000	2
2	maintenance door of LCD main cabinet	BH2106-MC0700-00	1
3	Screw M4X10L	0000.LS.005041201	28
4	4G antenna (No such function)		1
5	antenna fixing metal plate	2106.WJ.00011000	1
6	Screw M8X50L	0000.LS.001085000	6
7	Screw M3X5L	SCR_THS-N-M3X5L	8
8	LED driver board	NP-1249-00	1
9	Circuit board L standoff fixed clips	L_TYPE	8
10	Screw A3X8L	SCR_FLAT-A3X8L	8
11	4G LTE module	NC-1224-00	1
12	Nut M4	HEX_NUT-M4	4
13	Fan	0000.PJ.08000500	1
14	Screw M6X16L	0000.LS.005061600	6

PARTS LIST			
ITEM	TITLE	PART NUMBER	QTY
15	Fan guard	0000.PJ.681900510	1
16	Screw M4X65L	0000.LS.001046500	4
17	Screw M4X10L	0000.LS.001041000	8
18	LCD marquee acrylic	2106.YS.00002900	1
19	LED Light Strip 600mm	1512.PJ.006800600	1
20	LCD upper cover	1707.WJ.00003600	1
21	toughened glass	1707.BL.00000100	1
22	Foam	0000.SJ.710002004	4
23	LCD	1G_LC420DUN-SER2	1
24	partition plate	1811.WJ.00016000	4
25	Screw M4X8L	0000.LS.001040800	22
26	LCD sheet metal - A	1707.WJ.00003000	1
27	LCD sheet metal - B	1707.WJ.00003100	1
28	Gasket	1811.WJ.00016100	24
29	LCD lower cover	1707.WJ.00003600	1

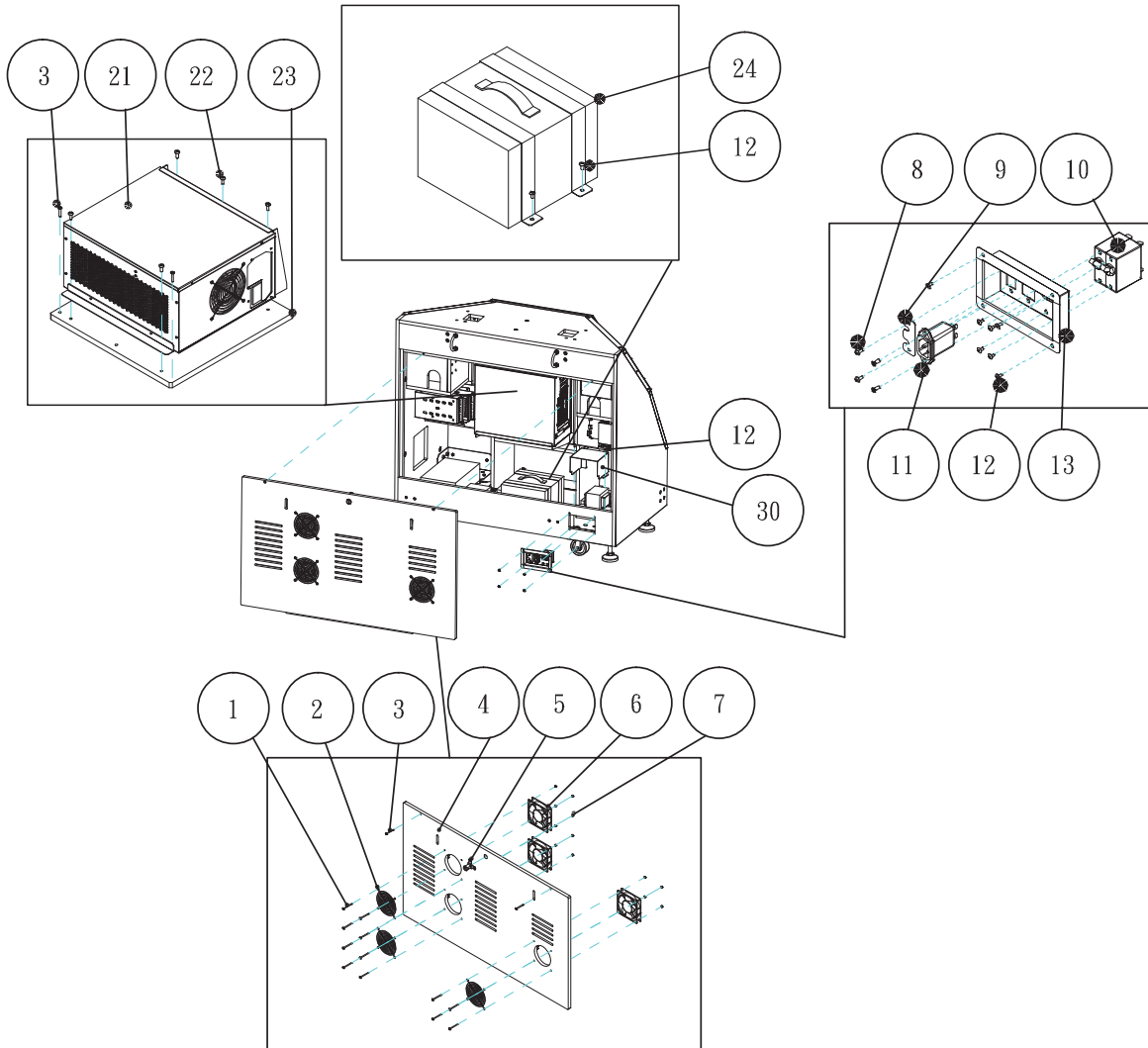
Maintenance and Repair



PARTS LIST			
ITEM	TITLE	PART NUMBER	QTY
1	leg leveler	0000.PJ.631161000	4
2	leg leveler sheet plate	1902.WJ.00006800	4
3	Screw M8X20L	0000.LS.010082000	32
4	3 inch leg leveler	0000.PJ.13000405	4
5	cabinet connection sheet plate (left)	2106.WJ.00011100	1
6	Screw M8X16L	0000.LS.005081600	8
7	LCD speaker mesh (left)	1902.WJ.00004200	1
8	Screw M4X8L	0000.LS.005040800	28
9	Screw M4X8L	0000.LS.001040800	12
10	LED Light Strip 300mm	1404.PJ.00680300	1
11	Fan sheet plate	2106.WJ.00013500	1
12	Nut M4	0000.LS.327040013	2
13	Fan	2106.JD.00002000	1
14	Screw M4X40L	0000.LS.001044000	2
15	LCD speaker mesh (right)	1902.WJ.00004300	1
16	small speaker	1707.JD.080042500	2
17	bass speaker acrylic sheet plate (right)	2106.YS.01002200	1
18	vent	0810.PJ.00004700	1
19	bass speaker	1707.JD.080080600	1
20	Screw M4X16L	0000.LS.001041600	4
21	bass speaker acrylic sheet plate (center)	2106.YS.01001900	1
22	bass speaker acrylic sheet plate (left)	2106.YS.01002100	1
23	Screw M4X16L	0000.LS.005041600	4
24	Tutorial acrylic	2106.YS.00002501	1



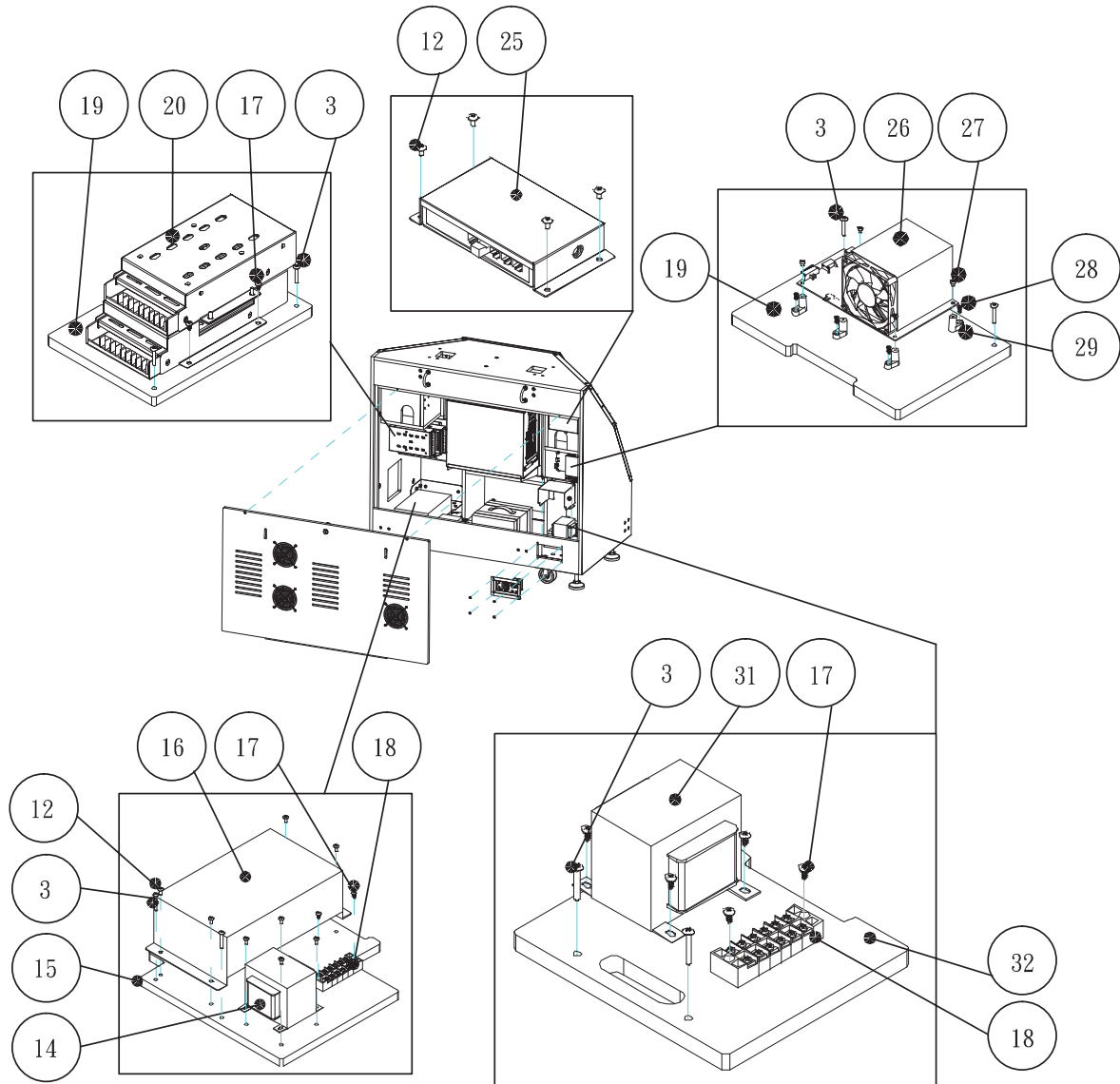
Maintenance and Repair



PARTS LIST			
ITEM	TITLE	PART NUMBER	QTY
1	Screw M4X50L	0000.LS.001045000	12
2	Fan guard	0000.PJ.681900510	4
3	Screw M4X30L	0000.LS.005043000	3
4	Base cabinet rear maintenance door	BH2106-MC0600-00	1
5	Lock	0000.PJ.651260080	1
6	Fan	0000.PJ.08000500	3
7	Nut M4	0000.LS.327040013	12
8	Screw M3X6L	0000.LS.001030600	6
9	Internet hole sheet plate	1902.WJ.00004000	1
10	Circuit breaker	1902.JD.00001000	1
11	Line filter socket	1902.JD.00000100	1
12	Screw M4X12L	0000.LS.005041200	22
13	Power in box	1902.WJ.00003800	1
14	Transformer - A	2106.JD.130961494	1
15	Electronic parts board - A	BH2106-MC1200-00	1
16	Audio AMP	1707.JD.501041AMP	1

PARTS LIST			
ITEM	TITLE	PART NUMBER	QTY
17	Screw M4X12L	0000.LS.002041200	8
18	Terminal strip	0000.DZ.610000006	2
19	Electronic parts board - B	BH2106-MC1000-00	2
20	Power module	0000.JD.11RS35012	1
21	Computer	V3000_CASE_S3000BORAD_ASM_80	1
22	Screw M4X12L	0000.LS.001041200	5
23	Electronic parts board - C	BH2106-MC1300-00	1
24	Voltage stabilizer	2106.DZ.14001000	1
25	HUB	0810.JD.8JHJ00001	1
26	Vibration AMP	1707.DZ.00000100	1
27	Screw M3X6L	0000.LS.001030600	4
28	Screw A4X12L	0000.LS.002041200	6
29	Circuit board L standoff fixed clips	0000.SI.500000002	6
30	Power in protection cover	1902.WJ.00004100	1
31	Transformer - B	1707.JD.00000200	1
32	Electronic parts board - D	BH2106-MC1100-00	1

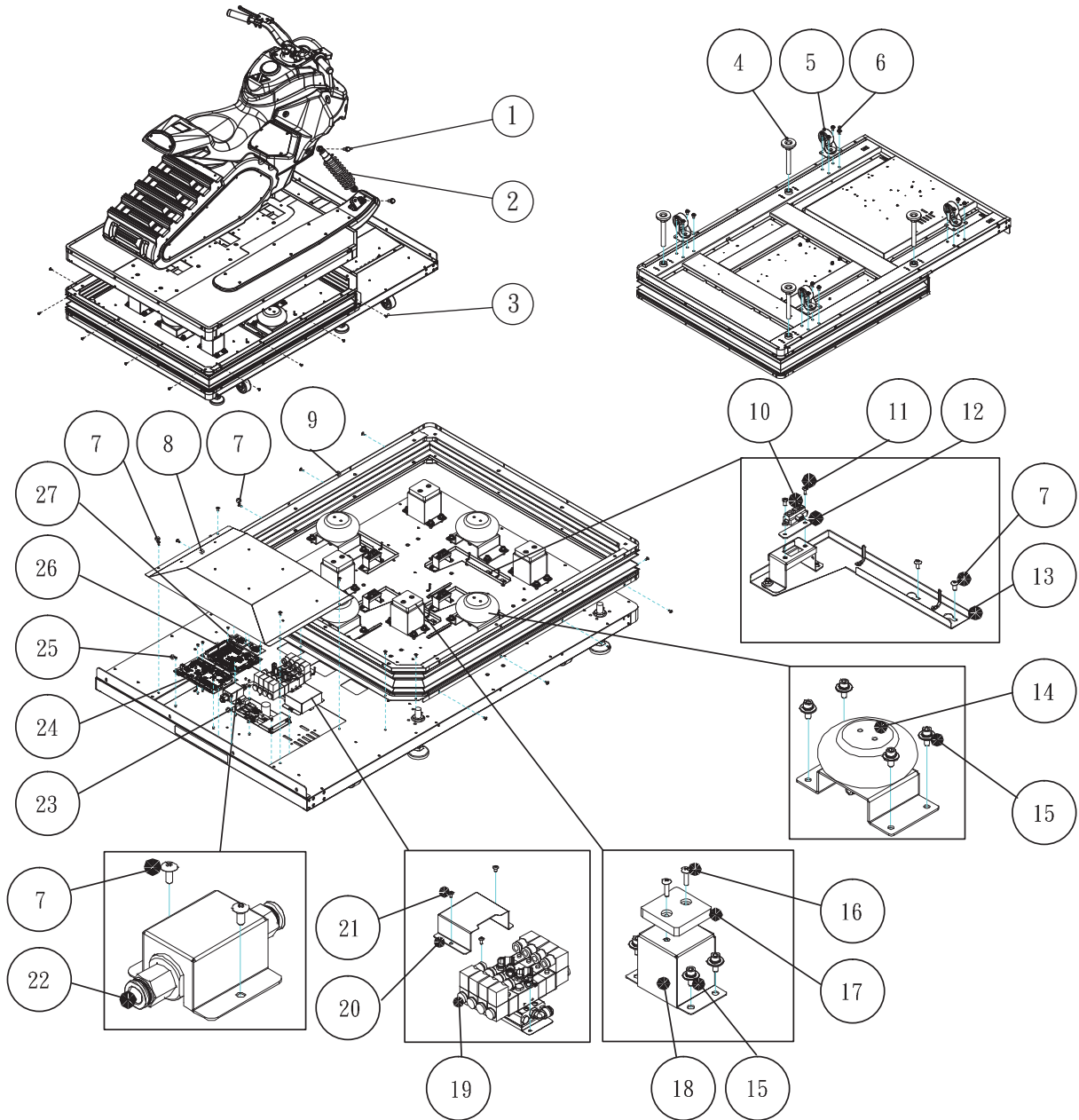
Maintenance and Repair



PARTS LIST			
ITEM	TITLE	PART NUMBER	QTY
1	Screw M4X50L	0000.LS.001045000	12
2	Fan guard	0000.PJ.681900510	4
3	Screw M4X30L	0000.LS.005043000	3
4	Base cabinet rear maintenance door	BH2106-MC0600-00	1
5	Lock	0000.PJ.651260080	1
6	Fan	0000.PJ.08000500	3
7	Nut M4	0000.LS.327040013	12
8	Screw M3X6L	0000.LS.001030600	6
9	Internet hole sheet plate	1902.WJ.00004000	1
10	Circuit breaker	1902.JD.00001000	1
11	Line filter socket	1902.JD.00000100	1
12	Screw M4X12L	0000.LS.005041200	22
13	Power in box	1902.WJ.00003800	1
14	Transformer - A	2106.JD.130961494	1
15	Electronic parts board - A	BH2106-MC1200-00	1
16	Audio AMP	1707.JD.501041AMP	1

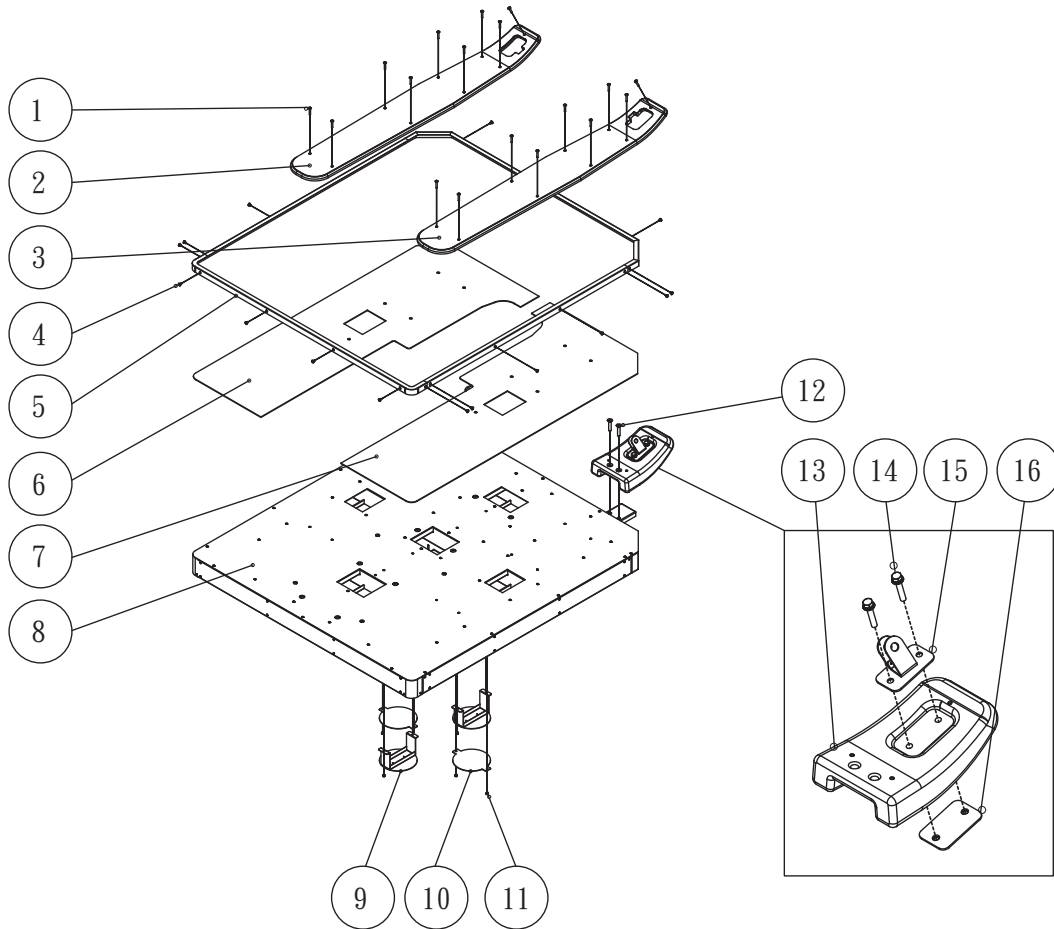
PARTS LIST			
ITEM	TITLE	PART NUMBER	QTY
17	Screw M4X12L	0000.LS.002041200	8
18	Terminal strip	0000.DZ.610000006	2
19	Electronic parts board - B	BH2106-MC1000-00	2
20	Power module	0000.JD.1LRS35012	1
21	Computer	V3000_CASE_S3000BORAD_ASM_80	1
22	Screw M4X12L	0000.LS.001041200	5
23	Electronic parts board - C	BH2106-MC1300-00	1
24	Voltage stabilizer	2106.DZ.14001000	1
25	HUB	0810.JD.8JHJ00001	1
26	Vibration AMP	1707.DZ.00000100	1
27	Screw M3X6L	0000.LS.001030600	4
28	Screw A4X12L	0000.LS.002041200	6
29	Circuit board L standoff fixed clips	0000.SJ.500000002	6
30	Power in protection cover	1902.WJ.00004100	1
31	Transformer - B	1707.JD.00000200	1
32	Electronic parts board - D	BH2106-MC1100-00	1

Maintenance and Repair



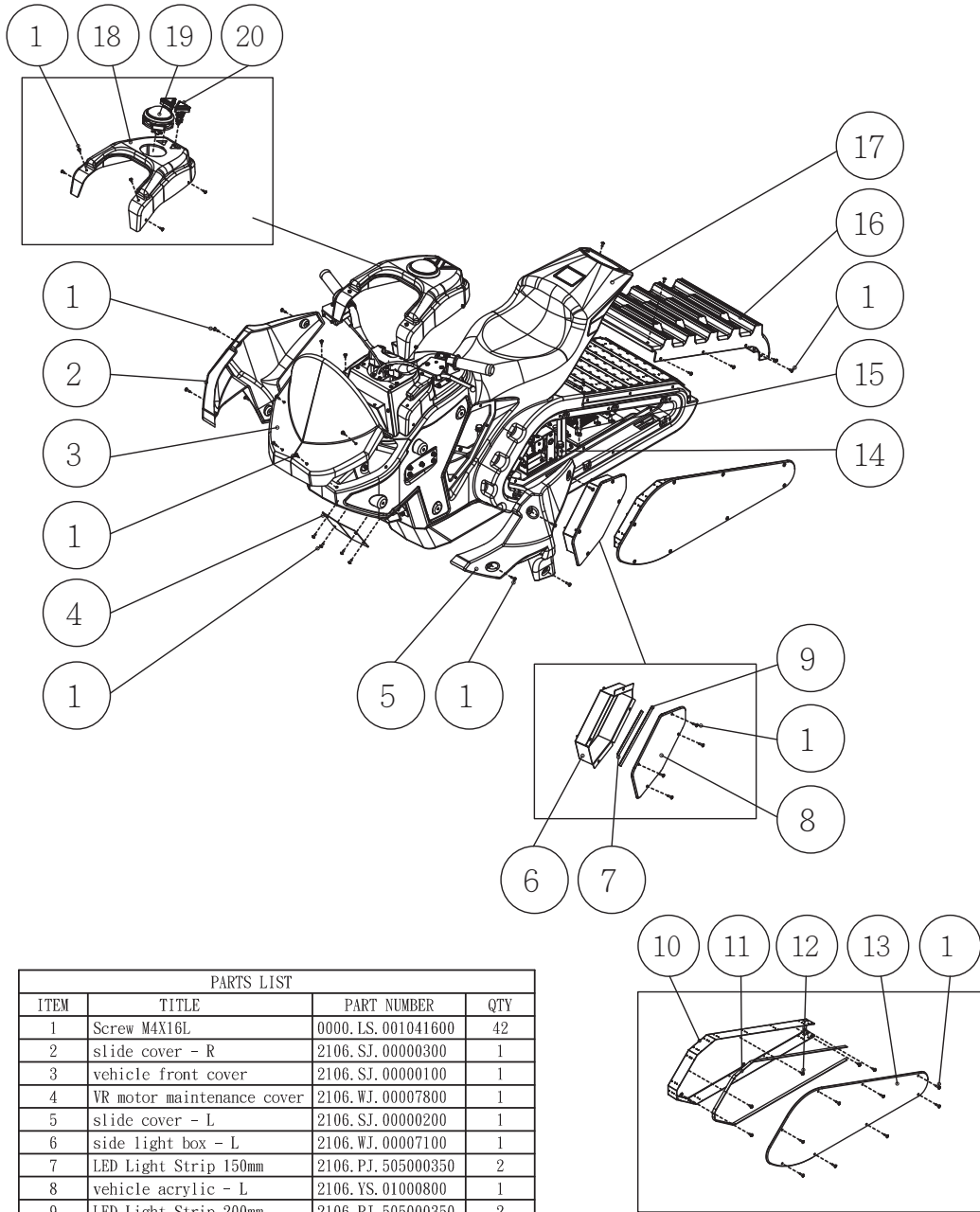
PARTS LIST			
ITEM	TITLE	PART NUMBER	QTY
1	Screw M10X40L	0000.LS.700510040	4
2	shock absorber	2106.PJ.01003000	2
3	Screw M4X8L	0000.LS.005040801	16
4	leg leveler	0000.PJ.631161000	4
5	3 inch caster	0000.PJ.13000405	4
6	Screw M8X20L	0000.LS.010082000	16
7	Screw M4X10L	0000.LS.001041000	26
8	hardware maintenance cover	2106.WJ.00000300	1
9	platform guide light module	1902.SJ.01000200	1
10	height sensor	1902.DZ.01000100	4
11	Screw M3X8L	0000.LS.001030800	8
12	PVC gasket sheet	2106.YS.01005700	4
13	height sensor base	AMA-20-16100	4
14	air spring	2106.PJ.01001000	4

PARTS LIST			
ITEM	TITLE	PART NUMBER	QTY
15	Screw M8X16L	0000.LS.020081600	15
16	Screw M6X20L	0000.LS.020062000	8
17	PU	1902.WJ.00006500	4
18	PU bracket	2106.WJ.00000800	4
19	solenoid valve	2106.JD.00000400	1
20	solenoid valve silencer cover	2106.WJ.00001000	1
21	Screw M4X8L	0000.LS.001040800	2
22	check valve	1902.PJ.01000500	1
23	LQ motor control panel	LQ-A-1094-01	1
24	OL-I/O control panel	10-OL_BOARD	1
25	Screw M3X6L	0000.LS.001030600	16
26	LP-I/O control panel	LP-1086-01	1
27	LED driver board	1811.BC.A00000400	2



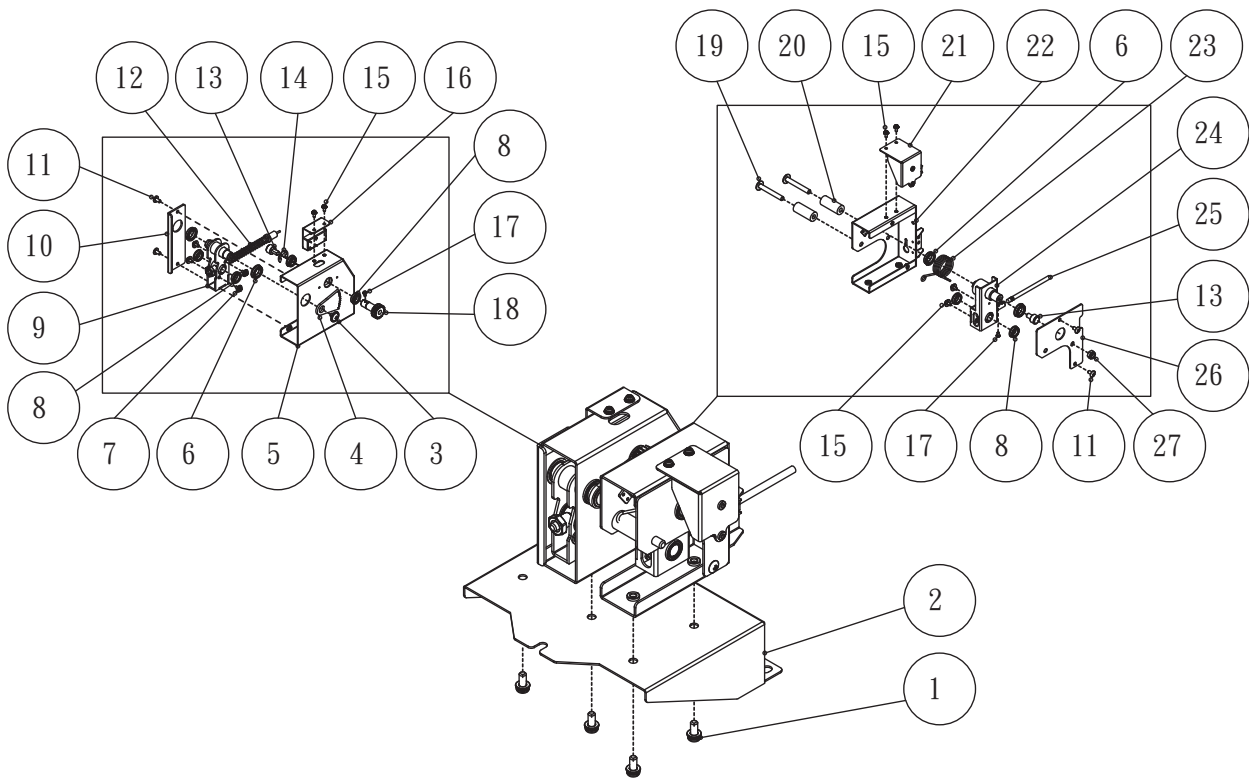
PARTS LIST			
ITEM	TITLE	PART NUMBER	QTY
1	Screw M4X25L	SCR_THSHS-N-M4X25L	18
2	ski-shape acrylic - L	AMA-20-25000-L	1
3	ski-shape acrylic - R	AMA-20-25000-R	1
4	Screw M4X8L	SCR_THSHS-N-M4X8L	19
5	side cover	AMA-20-22000	1
6	RUBBER-L	RUBBER-L	1
7	RUBBER-R	RUBBER-R	1
8	motion platform	AMA-20-21000	1
9	sensor detecting sheet - A	AMA-20-26000	2
10	sensor detecting sheet - B	AMA-20-28000	2
11	Nut M4	NYLON_NUT-M4	8
12	Screw M8X40L	SCR_HSFHS-M8X40L	4
13	ski decorative	AMA-20-23100	2
14	Screw M8X45L	SCR_HS-NC-M8X45L	4
15	shock absorber bracket	AMA-20-23200	2
16	shock absorber Fixed sheet	AMA-20-23300	2

Maintenance and Repair



PARTS LIST			
ITEM	TITLE	PART NUMBER	QTY
1	Screw M4X16L	0000.LS.001041600	42
2	slide cover - R	2106.SJ.00000300	1
3	vehicle front cover	2106.SJ.00000100	1
4	VR motor maintenance cover	2106.WJ.00007800	1
5	slide cover - L	2106.SJ.00000200	1
6	side light box - L	2106.WJ.00007100	1
7	LED Light Strip 150mm	2106.PJ.505000350	2
8	vehicle acrylic - L	2106.YS.01000800	1
9	LED Light Strip 200mm	2106.PJ.505000350	2
10	track metal plate - L	2106.WJ.00007300	1
11	LED Light Strip 1350mm	2106.PJ.505001350	2
12	Screw M4X10L	0000.LS.001041000	12
13	track acrylic - L	2106.YS.01000100	1
14	Screw M10X40L	0000.LS.700510040	4
15	Screw M10X65L	0000.LS.700510065	8
16	track	2106.SJ.00000600	1
17	vehicle	2106.SJ.00001000	1
18	fuel tank cap	2106.SJ.00000400	1

Maintenance and Repair



PARTS LIST			
ITEM	TITLE	PART NUMBER	QTY
1	Screw M5X15L	SCR_PHS-NC-M5X15L	6
2	brack and throttle module bracket	AMA-20-31310	1
3	Screw M5X8L	SCR_THS-LW-M5X8L	1
4	gear-A	AMA-20-31323-3	1
5	brake unit base	AMA-20-31321	1
6	bearing(D12-d18-B4)	BEARING-FB-D12-D18-B4	4
7	Wasser M5	WASHER_D5	5
8	bearing(D10-d15-B4)	BEARING-FB-D10-D15-B4	6
9	brack and throttle bracket - A	AMA-20-31323-1	1
10	brake unit cover plate	AMA-20-31327	1
11	Screw M4X8L	SCR_THS-N-M4X8L	4
12	brake cable parts module	BRAKE_CABLE_END	1
13	sensor magnet module - 0	MAGENT-D10	2
14	E-Type Retaining Rings	RINGS_E-D9	1
15	Screw M3X8L	SCR_PHS-NC-M3X8L	8
16	sensor magnet module - 1 - A	AMA-20-31328-1	1
17	Screw M3X5L	SCR_PHS-N-M3X5L	2
18	gear-B	AMA-20-31322	1
19	Screw M6X45L	SCR_THS-N-M6X45L	2
20	PU	AMA-20-31326	2
21	sensor magnet module - 1 - B	AMA-20-31335-1	1
22	throttle unit base	AMA-20-31331	1
23	torsion spring	AKE-23-SPRING-A	1
24	brack and throttle bracket - B	AMA-20-31332-1	1
25	throttle cable	ACC_CABLE	1
26	throttle unit cover plate	AMA-20-31333	1
27	Nut M6	NYLON_NUT-M6	1