



rtc

Beverage
Merchandising
Solutions

RTC's Merchandising Solutions

Boost beverage sales for a wide range of categories and environments, while providing ongoing labor savings;

**DRIVING INCREASED
PROFITS ON EVERY SHELF.**

ENVIRONMENTS

COLD VAULTS
COOLERS
OPEN AIR
FRONT-LOADING
FREE STANDING
AMBIENT SHELVING
GONDOLA
WAREHOUSE
TOP SHELF

CATEGORIES

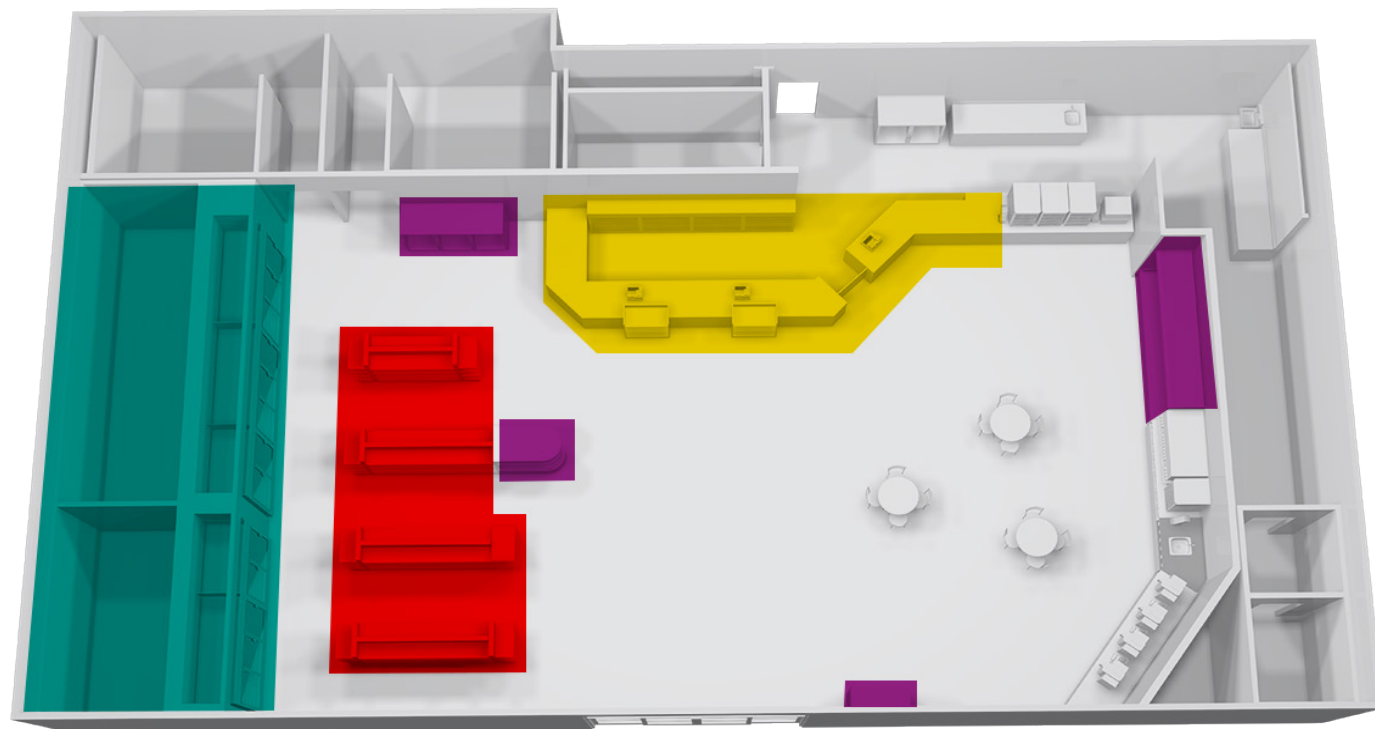
CARBONATED SOFT DRINKS
SPORTS DRINKS
ENERGY DRINKS
WATER
DAIRY & JUICE
COFFEE
TEA
SINGLE-SERVE BEER
WINE
SPIRITS



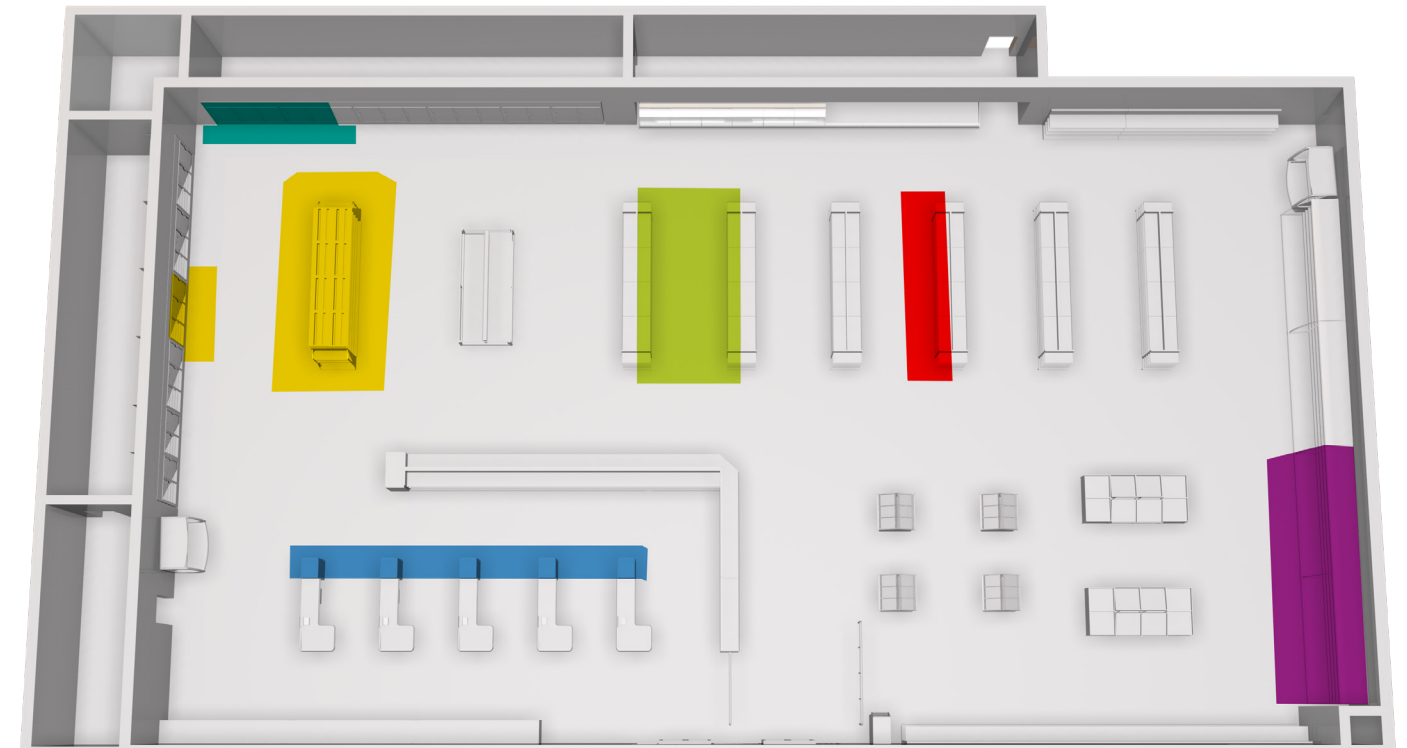
ENERGIZE BEVERAGE PROFITS THROUGHOUT YOUR STORE.

Create a winning retail environment, where product is self-faced at the shelf edge 24/7, always within reach and available for sale with the least amount of labor.

C-STORE



GROCERY



COLD VAULT

- EcoTrac Gravity (page 10)

CENTER STORE

- EcoTrac Spring (page 10)
- ProfitPusher® 3 Adjustable Tray (page 22)

GRAB N GO

- EcoTrac Fast Lane (page 11)
- ProfitPusher® 3 Adjustable Tray (page 22)

CASH WRAP

- EcoTrac Spring Reduced Depth (page 10)
- EcoTrac Fast Lane (page 11)
- ProfitPusher® 3 Standard (page 22)

FRONT END CHECKOUT

- EcoTrac Spring Reduced Depth (page 10)
- EcoTrac Fast Lane (page 11)
- ProfitPusher® 3 Standard (page 22)
- ProfitPusher® 3 Tall (page 22)

PRODUCE

- EcoTrac Spring Reduced Depth (page 10)
- ProfitPusher® 3 Adjustable Tray (page 22)

BEER, WINE & LIQUOR

- EcoTrac Spring (page 10)
- ProfitPusher® 3 Adjustable Tray (page 22)

CENTER STORE (JUICE)

- ProfitPusher® 3 Center Store (page 23)

BEVERAGE AISLES

- EcoTrac Spring (page 10)
- ProfitPusher® 3 Adjustable Tray (page 22)
- ProfitPusher® 3 Center Store (page 23)
- ProfitPusher® 3 Plus (page 23)

DAIRY

- EcoTrac Spring (page 10)
- ProfitPusher® 3 Center Store (page 23)

ECOTRAC® KEEPS YOUR PRODUCT WITHIN REACH AND ALWAYS AVAILABLE FOR SALE.

EcoTrac® drives greater impulse purchases through best-in-class presentation of your single-serve beverages in the cold vault, cooler (front-loading & open air) and on ambient (gondola & warehouse) shelving.

Available in spring-feed and gravity-feed versions, EcoTrac glides feature an unbreakable clear front retainer and an eco-friendly reprocessed tray. Backed by a 6 year warranty, EcoTrac is the longest-lasting, best performing, most sustainable beverage merchandising system on the market.



Presentation is everything. EcoTrac's crystal clear front retainer provides shoppers with a best-in-class view of your beverage products.



ENERGIZE BEVERAGE SALES

Bottles and cans are continually front-faced, eliminating product stuck at the back of the shelf and out of reach of the shopper—product is always available for sale.



SAVE LABOR

With EcoTrac, no store labor is needed to front-face product. Stock rotation time is reduced, and you'll never lose facings due to broken straps or need to deploy labor to replace them.



6 YEAR WARRANTY

- EcoTrac has a 6 year warranty. The clear fronts are unbreakable and the springs continually push product forward. If not, we'll replace them.*
- EcoTrac's 6 year shelf life, versus 1-2 years for traditional glides, means less waste in landfills and a reduction in your carbon footprint.

* RTC warrants that EcoTrac clear front retainers will not break and the spring-feed paddle will push standard beverage products to the front of the glide under normal use.

ECOTRAC PAYS FOR ITSELF IN AS LITTLE AS 1 MONTH.*



30

lanes of EcoTrac added
(8ft shelf of 20 oz. bottles)



4

additional bottles sold per day
with the product always front-faced
and available for sale. (1 additional
bottle per day in 13% of the lanes.)



5

cases average incremental sales
per month (4 bottles x 30 days)
EcoTrac investment pays for
itself in one month.

*ROI example based on EcoTrac Spring analysis. ROI time frames will vary by category and retailer.

ECOTRAC SPRING GLIDE

Works best in front-loading environments

Designed to perform superbly on flat shelves. The spring-feed paddles consistently front-face product, even if the glides get dirty. Ten glide sizes to push everything from 8 oz. cans to 2 Liter bottles. Glide sizes: 8.4 oz, 12 oz Sleek, 12 oz "can", 20 oz, 28 oz, 1L Narrow (8 Lanes), 1L Wide (7 Lanes), 32 oz, 2L (5 Wide), 2L (Single Lanes).



ECOTRAC FAST LANE

Designed to maximize facings in the most popular GDM-10 and GDM-12 style front-loading coolers

Increase your facings from 6 to 7 per shelf. The spring-feed paddles consistently front-face product, optimizing impulse purchases. Out of the box onto the shelf minimizing labor. Available in two variations: 7 bottles wide by 6 bottles deep or by 5 bottles deep.



ECOTRAC GRAVITY GLIDE

Works best in rear-loading environments

Designed to perform on angled shelves, without spring-paddle, using gravity to front-face product. EcoTrac's unbreakable clear fronts ensure all lanes are functional and no facings are lost to broken straps. Ten glide sizes to merchandise everything from 8 oz cans to 2 Liter bottles. Glide sizes: 8.4 oz, 12 oz Sleek, 12 oz "can", 20 oz, 28 oz, 1L Narrow (8 Lanes), 1L Wide (7 Lanes), 32 oz, 2L (5 Wide), 2L (Single Lanes).



RETROFIT PADDLE FOR FIXED WIRE DIVIDER SHELVING

Designed to convert fixed-wire gravity shelving to flat spring-fed shelving

Retrofit your fixed-wire gravity shelving with spring-feed paddles that consistently front-face product, optimizing impulse purchases. Easy installation, no tools required.



ECOTRAC REDUCED DEPTH GLIDE

Works best in front-loading environments

Spring-fed glide pre-cut to common front loading cooler shelf depths holding 6, 7 or 8, 20 oz. containers. Optimize impulse purchases in these high volume coolers. Out of the box onto the shelf minimizing labor. Also available in gravity. For cooler shelving 10" -14" in depth see ProfitPusher 3 on page 22.



RETROFIT PADDLE FOR ECOTRAC GRAVITY GLIDES

Designed to convert EcoTrac Gravity Glides to flat spring-fed shelving

Retrofit your EcoTrac Gravity Glides with spring-feed paddles that consistently front-face product, optimizing impulse purchases. Easy installation, no tools required.



EcoTrac® Beverage Marketing Solutions

Communicate with your shoppers at the shelf front with a variety of marketing tools.



CLEAR SOLID FRONT GRAPHIC

Built-in graphic area holds custom printed inserts that enhance branding and planogram compliance.



EMBOSSED CLEAR STRAP FRONT

Custom embossed clear strap front enhances your brand and enforces brand space. (Minimum quantity required)

PRICE CHANNEL

Holds custom printed inserts and integrates into the base of all glide sizes in 3" and 27" lengths.

Also available for the EcoTrac Fast Lane.

CLEAR STRAP FRONT BOTTOM RETAINER

Holds custom printed inserts that enhance branding and planogram compliance.

SPRING PADDLE GRAPHICS

Brand graphic/inventory labels slide into spring-feed paddle, enforcing brand space & planogram compliance.

CLEAR STRAP FRONT PRICE TAG

Easily clips over the clear strap front. Available as Flat Front and C-Channel design.

EcoTrac® Accessories

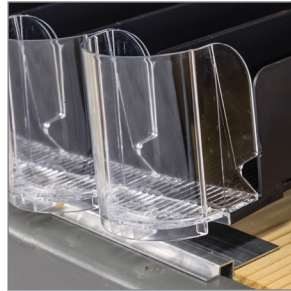
Connect EcoTrac to a wide variety of shelves.

Easy to install and secures to most shelves **without tools.**



GONDOLA SHELF RETAINER/BRACE

Secures all tray sizes, except 28 oz and 2L, to standard gondola shelves.



WAREHOUSE SHELF RETAINER/BRACE

Secures all tray sizes, except 28 oz and 2L to warehouse shelves.



28 OZ. LEFT WALL

Left wall is used to create a finished glide lane(s).



ECOTRAC SPRING/PADDLE KIT

Used to upgrade gravity glides to spring glides.



28 OZ. GONDOLA SHELF RETAINER/BRACE

Secures 28 oz tray to standard gondola shelves.



28 OZ. WAREHOUSE SHELF RETAINER/BRACE

Secures 28 oz tray to warehouse shelves.

MARKETING ACCESSORIES



STANDARD PRICE CHANNEL

Custom sizes available.



ECOTRAC PRICE TAG FLAT FRONT



ECOTRAC PRICE TAG C-CHANNEL FRONT



2 LITER GONDOLA SHELF RETAINER/BRACE

Secures 2 Liter tray to standard gondola shelves.



2 LITER WAREHOUSE SHELF RETAINER/BRACE

Secures 2 Liter tray to warehouse shelves.



28 OZ. PRICE CHANNEL

Custom sizes available.



ECOTRAC FLM PRICE CHANNEL COOLER TOPPER

Graphic extrusion with magnet to secure EcoTrac Reduced Depth Glides to top of cooler (excludes 28 oz).



PADDLE RETRACTOR

Used to pull the paddle to the back of the tray when restocking product in rear-loading cooler.



BACK STOP

Used when an EcoTrac Spring-Feed glide is shortened to hold paddle back for rear loading.



FAST LANE PRICE CHANNEL



FAST LANE PRICE CHANNEL COOLER TOPPER

Graphic extrusion with magnet to secure Fast Lane 7X6 tray to top of cooler.



SOLUTIONS THAT IMPROVE PRODUCT PRESENTATION, SPUR IMPULSE PURCHASES AND PROVIDE ONGOING LABOR SAVINGS.

ProfitPusher 3 drives greater impulse purchases through best-in-class presentation of select multi-packs and single-serve beverages in coolers (front-loading & open air) and on ambient (gondola & warehouse) shelving.

More than a front-facing system, ProfitPusher 3 is a total shelf productivity tool that reduces the labor required for cut-ins and resets. Our patented slide and lock system moves blocks of product at a time, allowing shelves to remain stocked during planogram changes to save time and money with every cut-in and reset. The universally adjustable system maintains planogram compliance across multiple sized packages, including multi-packs and single-serve beverages. Additionally, ProfitPusher 3 solves for merchandising shorter depth shelves (10"-14") not covered by glides.

rtc

ProfitPusher® 3
Beverage Merchandising

MAKE SHOPPING AND STOCKING BEVERAGES **QUICKER AND EASIER THAN EVER BEFORE.**

Ongoing ROI

Quickly and easily re-planogram stocked shelves to save time and money with every cut-in and reset.



Adjustable & Versatile

Allows diverse package types for single-serve and multi-packs to coexist on the same shelf. Works on all shelf types.



100% product visibility

Provides an unobstructed, continually front-faced, view of your product.



Heavy Duty Construction

Built to handle the wear and tear of pushing high velocity categories. Meets NSF/ANSI 2 requirements for food equipment safety.

PROVIDE ONGOING LABOR SAVINGS WITH OUR PATENTED SLIDE AND LOCK SYSTEM.

Quickly and easily re-planogram stocked shelves, saving you time and money with every reset. Pushers easily slide left to right on a front rail and secure into place with a simple locking tab.



Locking tab to adjust facings and secure in place.

The ProfitPusher 3 Spring-Feed Family

PROFITPUSHER 3
STANDARD

PROFITPUSHER 3
TALL

PROFITPUSHER 3
ADJUSTABLE TRAY

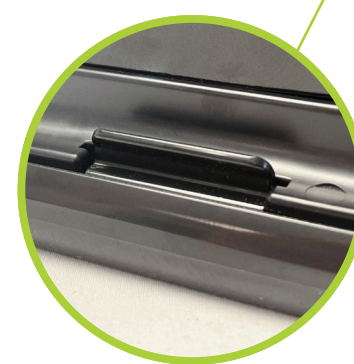
PROFITPUSHER 3
CENTER STORE

PROFITPUSHER 3
PLUS



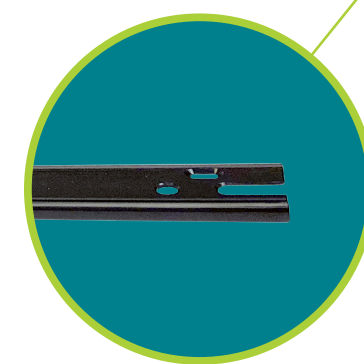
GRAPHIC HOLDER

Graphic Channel provides location for custom messaging and enforces brand space. Available for all shelf widths.



LOCKING TAB

Simple locking tab allows pushers to easily slide left and right on front rail for universal adjustability.



FRONT RAIL

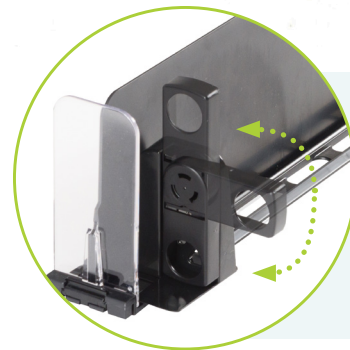
Universal front rail anchors all ProfitPusher 3 systems and easily attaches to solid and wire shelves without tools. Works in ambient and refrigerated environments.

PROFITPUSHER® 3 STANDARD & TALL

Works for single-serve beverages

ProfitPusher 3 Standard and Tall merchandise single-serve beverages on shelf depths 10"-14" not covered by beverage glides. Standard is used for beverages 6 oz to 14 oz and Tall is used for beverages 16 oz - 24 oz.

As a universally adjustable system, ProfitPusher 3 Standard also accommodates a mix of different sized single-serve beverages up to 16 oz, on shelf depths 10"-22".



Paddle Extender

Built-in paddle extender rotates up to 180 degrees to provide extra support for wide and tall products.

PROFITPUSHER® 3 PLUS

Works for multi-pack beverages

Effectively front-face select multi-packs on shelf depths 26" - 30". Built to handle the wear and tear of pushing large, bulky and heavy product.



PROFITPUSHER® 3 ADJUSTABLE TRAY

Works for mixed-assortment of single-serve beverages

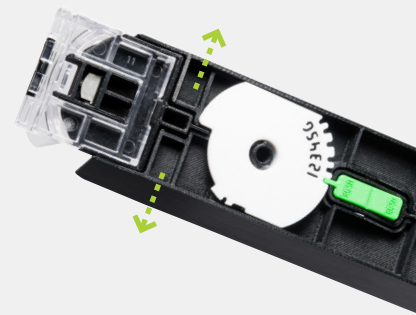
Effectively front-face a mix of single-serve beverages while enhancing planogram compliance with ProfitPusher 3 Adjustable Tray. 6 width settings designed to fit single-serve beverage sizes from 8 oz to 40 oz and standard wine bottles (750mL).



Retainer Extender

For retaining wine.

Adjustable divider walls allow you to dial in the size that best fits the product you want to merchandise.



PROFITPUSHER® 3 CENTER STORE

Works for single-serve beverages (widths >2.5") and multi-packs

ProfitPusher 3 Center Store accommodates 20 oz or greater single-serve beverages (diameter >2.5") and select multi-pack beverages on shelf depths 20"-24".





READY TO ORDER?
RTC'S BEVERAGE
MERCHANDISING
SOLUTIONS ARE
QUICK & EASY
TO ORDER.

RTC's Beverage Merchandising Solutions
can be spec'd and ordered in just a few simple steps.



Beverage
Merchandising Solutions
How to Spec & Order

HOW TO ORDER ECOTRAC

STEP 1
 Determine what size and model of EcoTrac is right for your bottles or cans.

STEP 2
 Determine how many lanes you will need.

STEP 3
 Determine the number of glides required.

STEP 4
 Determine what depth of glide you will need to fit your shelving.

STEP 5
 EcoTrac is sold by the carton. Determine the total number of cartons required.

STEP 6
 Save on freight costs by ordering in full pallets.

EcoTrac®

Clear Fronts

EcoTrac comes with a Clear Strap Front or a Clear Solid Front depending on the beverage product size. Both offer your shopper a best-in-class view of the product. (See charts on the following pages to learn the clear front style for each EcoTrac size.)

CLEAR STRAP FRONT

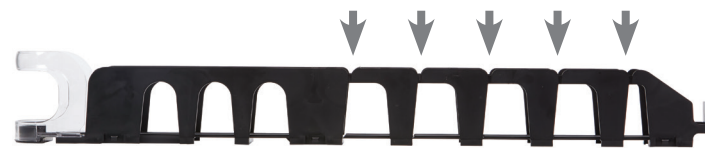


CLEAR SOLID FRONT



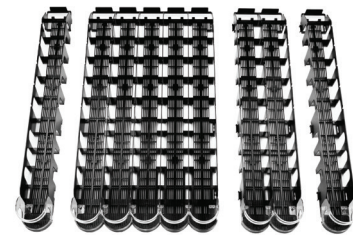
Depth Adjustment

EcoTrac has preset break off points to allow adjustability to different shelf depths from 14"-45" deep. (See charts on the following pages for EcoTrac depth availability.)



Width Adjustment

EcoTrac is configured from both single and multi-lane trays. They are produced and sold in these configurations to provide planogram flexibility while maximizing the number of facings per shelf. Single or multi-lane trays, except 28 oz and 2L, can be easily attached and detached to one another to accommodate any desired shelf width or planogram. (See charts on the following pages for glide configurations.)



Low Height Front Retainer



Optional 12 oz./16 oz. (can) and 20 oz. glides available with low height front retainers for merchandising product on tight vertically spaced shelves.

Front Loading Cooler Solutions

Maximize pack out and sales of your highest velocity equipment with RTC's spring-feed systems. Flawless execution, every SKU fronted at the shelf edge. Activate all shelves, not just those at eye level.

ECOTRAC FAST LANE 7X6



Designed for GDM-10, GDM-12, QBD CD-10, QBD CD-12, Hisense FL-35WC1H



ECOTRAC FAST LANE 7X5



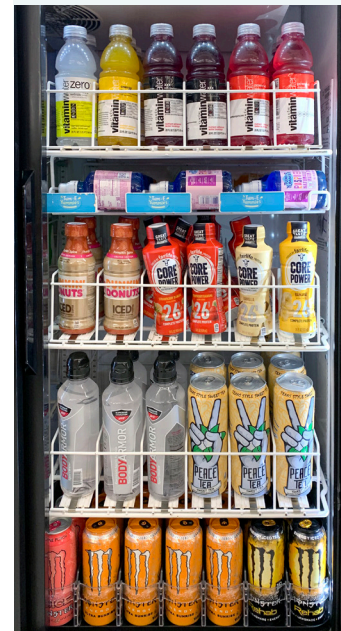
Designed for GDM-41SL



RETROFIT PADDLE FOR FIXED WIRE DIVIDER SHELVING



Designed for fixed wire divider shelves



ECOTRAC REDUCED DEPTH GLIDES



Out of the carton at 6, 7, & 8 20 oz. bottles deep.



HOW TO ORDER ECOTRAC



STEP 1

Determine what size and model of EcoTrac is right for your bottles or cans.



STEP 2

Determine how many lanes you will need.



STEP 3

Determine the number of glides required.



STEP 4

Determine what depth of glide you will need to fit your shelving.



STEP 5

EcoTrac is sold by the carton. Determine the total number of cartons required.



STEP 6

Save on freight costs by ordering in full pallets.

EcoTrac*

	Typical product usage	Lane capacity per shelf width	Lane configuration	Glide depth	Glides per carton	Cartons per pallet
8.4 oz EcoTrac* Clear Solid Front	8.4 oz Cans	36" Shelf=15 Lanes 48" Shelf=20 Lanes	Sold 12 Lanes Per Glide	28" Depth Adjusts to 14.7"-28" Holds 12 Cans Deep at 28"	6 Glides Per Carton (72 Lanes)	15 EcoTrac Gravity Cartons Per Pallet
	Max Product Width: 2.18"	Cold Vault=12 Lanes	3+3+3+1+1+1 Configuration			9 EcoTrac Spring Cartons Per Pallet

	Typical product usage	Lane capacity per shelf width	Lane configuration	Glide depth	Glides per carton	Cartons per pallet
12 oz "can" EcoTrac* Clear Strap Front Available in reduced height front retainer	12 & 16 oz Bottles	36" Shelf=13 Lanes 48" Shelf=17 Lanes	Sold 10 Lanes Per Glide	27" Depth Adjusts to 14.41"-27" Holds 10 Bottles Deep at 27" †	6 Glides Per Carton (60 Lanes)	12 EcoTrac Gravity Cartons Per Pallet
	12 & 16 oz Cans					12 EcoTrac Spring Cartons Per Pallet
	Max Product Width: 2.64"	Cold Vault=10 Lanes	5+1+1+3 Configuration	36" Depth Holds 13 Bottles Deep at 36" ††	4 Glides Per Carton (40 Lanes)	15 EcoTrac Gravity Cartons Per Pallet
						15 EcoTrac Spring Cartons Per Pallet

† Gravity 10 bottles deep. Spring 9 bottles deep. †† Gravity holds 13 bottles deep. Spring 12 bottles deep.

	Typical product usage	Lane capacity per shelf width	Lane configuration	Glide depth	Glides per carton	Cartons per pallet
8.4/12 oz Sleek Multipack EcoTrac* Clear Solid Front	8.4 & 12 oz Sleek Multipacks	36" Shelf=7 Lanes 48" Shelf=9 Lanes	Sold 5 Lanes Per Glide	28" Depth Adjusts to 17"-28" Holds 5 Multipacks Deep at 28"	1 Glide Per Carton (5 Lanes)	17 EcoTrac Gravity Cartons Per Pallet
	Max Product Width: 4.72"	Cold Vault=5 Lanes	1+1+1+1+1 Configuration			17 EcoTrac Spring Cartons Per Pallet

	Typical product usage	Lane capacity per shelf width	Lane configuration	Glide depth	Glides per carton	Cartons per pallet
20 oz EcoTrac* Clear Strap Front Available in reduced height front retainer	20-25 oz Bottles	36" Shelf=11 Lanes 48" Shelf=15 Lanes	Sold 9 Lanes Per Glide	27" Depth Adjusts to 13.6"-27" Holds 9 Bottles Deep at 27"	6 Glides Per Carton (54 Lanes)	12 EcoTrac Gravity Cartons Per Pallet
	20 & 24 oz Cans					12 EcoTrac Spring Cartons Per Pallet
	Max Product Width: 2.95"	Cold Vault=9 Lanes	5+2+1+1 Configuration	36" Depth Holds 12 Bottles Deep at 36"	4 Glides Per Carton (36 Lanes)	15 EcoTrac Gravity Cartons Per Pallet
						15 EcoTrac Spring Cartons Per Pallet

	Typical product usage	Lane capacity per shelf width	Lane configuration	Glide depth	Glides per carton	Cartons per pallet
12 oz Sleek EcoTrac* Clear Strap Front	8.5 oz Coca-Cola Contour Bottles	36" Shelf=14 Lanes 48" Shelf=19 Lanes	Sold 11 Lanes Per Glide	27" Depth Adjusts to 14.4"-27" Holds 11 cans Deep at 27"	6 Glides Per Carton (66 Lanes)	15 EcoTrac Gravity Cartons Per Pallet
	12 oz Energy Cans					9 EcoTrac Spring Cartons Per Pallet
	Max Product Width: 2.33"	Cold Vault=11 Lanes	3+3+3+1+1 Configuration	36" Depth Holds 14 cans Deep at 36"	4 Glides Per Carton (44 Lanes)	18 EcoTrac Gravity Cartons Per Pallet
						10 EcoTrac Spring Cartons Per Pallet

	Typical product usage	Lane capacity per shelf width	Lane configuration	Glide depth	Glides per carton	Cartons per pallet
1 Liter Narrow EcoTrac* Clear Strap Front	1 Liter Pepsi Brands	36" Shelf=10 Lanes 48" Shelf=13 Lanes	Sold 8 Lanes Per Glide	26" Depth Adjusts to 15.31"-26" Holds 8 Bottles Deep at 26"	6 Glides Per Carton (48 Lanes)	12 EcoTrac Gravity Cartons Per Pallet
	1 Liter Bottles					9 EcoTrac Spring Cartons Per Pallet
	Many 32 oz Alcohol Products	Cold Vault=8 Lanes	4+2+1+1 Configuration	36" Depth Holds 10 Bottles Deep at 36"	4 Glides Per Carton (32 Lanes)	10 EcoTrac Gravity Cartons Per Pallet
	Max Product Width: 3.35"					10 EcoTrac Spring Cartons Per Pallet

* Attachment Accessories Required.

* Attachment Accessories Required.

HOW TO ORDER ECOTRAC



STEP 1
Determine what size and model of EcoTrac is right for your bottles or cans.



STEP 2
Determine how many lanes you will need.



STEP 3
Determine the number of glides required.



STEP 4
Determine what depth of glide you will need to fit your shelving.



STEP 5
EcoTrac is sold by the carton. Determine the total number of cartons required.



STEP 6
Save on freight costs by ordering in full pallets.

EcoTrac®

	Typical product usage	Lane capacity per shelf width	Lane configuration	Glide depth	Glides per carton	Cartons per pallet
1 Liter Wide EcoTrac* Clear Strap Front	1 & 1.25 Liter Coca-Cola Brands	36" Shelf =9 Lanes 48" Shelf =12 Lanes	Sold 7 Lanes Per Glide	26" Depth Adjusts to 15.78"-26"	6 Glides Per Carton (42 Lanes)	12 EcoTrac Gravity Cartons Per Pallet
	1 Liter Bottles			9 EcoTrac Spring Cartons Per Pallet		
	40 oz Alcohol Bottles	Cold Vault =7 Lanes	4+1+1+1 Configuration	36" Depth Holds 7 Bottles Deep at 26"	4 Glides Per Carton (28 Lanes)	10 EcoTrac Gravity Cartons Per Pallet
	Max Product Width: 3.64"			10 EcoTrac Spring Cartons Per Pallet		

	Typical product usage	Lane capacity per shelf width	Lane configuration	Glide depth†	Glides per carton	Cartons per pallet
2 Liter EcoTrac* Clear Solid Front	2 Liter Bottles Max Product Width: 4.42"	36" Shelf =7 Lanes 48" Shelf =10 Lanes	Cold Vault = 5 Lanes	28" Depth Adjusts to 19.5"-28"	6 Glides Per Carton (30 Lanes)	9 EcoTrac Gravity Cartons Per Pallet
						9 EcoTrac Spring Cartons Per Pallet
			Solid 5 Lane Unit (for ambient shelving) or 1+1+1+1+1 Configuration (for cold vaults)	36" Depth Holds 6 Bottles Deep at 28"	3 Glides Per Carton (15 Lanes)	9 EcoTrac Gravity Cartons Per Pallet
						9 EcoTrac Spring Cartons Per Pallet

	Typical product usage	Lane capacity per shelf width	Lane configuration	Glide depth†	Glides per carton	Cartons per pallet
28 oz EcoTrac* Clear Strap Front	28 oz Bottles Max Product Width: 3.30"	36" Shelf = 10 Lanes 48" Shelf =13 Lanes	Cold Vault = 8 Lanes	22" Depth Adjusts to 18.20"-22" Holds 6 Bottles Deep at 22"	8 x 6 Wide Glides Plus 8 x 22" Single Lanes per Carton (54 Lanes)	N/A
						12 EcoTrac Gravity Cartons Per Pallet
		Ambient shelving sold combination solid 6 lane glide and single lanes. Cold vault shelving sold 8 lanes per glide	6+1+1 Configuration	28" Depth Adjusts to 18.20"-28" Holds 8 Bottles Deep	6 Glides Per Carton (48 Lanes)	9 EcoTrac Spring Cartons Per Pallet
						12 EcoTrac Gravity Cartons Per Pallet
			36" Depth Holds 10 Bottles Deep	4 Glides Per Carton (32 Lanes)	12 EcoTrac Gravity Cartons Per Pallet	
						12 EcoTrac Spring Cartons Per Pallet


	Typical product usage	Lane capacity per shelf width	Lane configuration	Glide depth†	Glides per carton	Cartons per pallet
EcoTrac* Fast Lane 7 x 6	12 & 16 oz. Cans 20 oz. Bottles	GDM-10 GDM-12 QBD CD-10 QBD CD-12 Hisense FL-35WC1H	7 Wide Configuration	Glide Depth 18.25" Holds 6 Bottles	6 Glides per Carton (42 Lanes)	16 Cartons per Pallet
	Max Product Width: 2.95"					


	Typical product usage	Lane capacity per shelf width	Lane configuration	Glide depth†	Glides per carton	Cartons per pallet
32 oz EcoTrac* Clear Solid Front	32 oz Bottles Some Wider 40 oz Alcohol Bottles	36" Shelf =9 Lanes 48" Shelf =12 Lanes	Cold Vault =7 Lanes	28" Depth Adjusts to 17.12"-28"	6 Glides Per Carton (42 Lanes)	12 EcoTrac Gravity Cartons Per Pallet
						9 EcoTrac Spring Cartons Per Pallet
	Max Product Width: 3.81"		4+2+1 Configuration	36" Depth Holds 7 Bottles Deep at 28"	3 Glides Per Carton (21 Lanes)	10 EcoTrac Gravity Cartons Per Pallet
						10 EcoTrac Spring Cartons Per Pallet


	Typical product usage	Lane capacity per shelf width	Lane configuration	Glide depth†	Glides per carton	Cartons per pallet
EcoTrac* Fast Lane 7 x 5	12 & 16 oz. Cans 20 oz. Bottles	GDM-41 SL	7 Wide Configuration	Glide Depth 14.88" Holds 5 Bottles	8 Glides per Carton (48 Lanes)	16 Cartons per Pallet
	Max Product Width: 2.95"					


† Available in 45" Gravity. * Attachment Accessories Required.


HOW TO ORDER ECOTRAC

STEP 1
 Determine what size and model of EcoTrac is right for your bottles or cans.

STEP 2
 Determine how many lanes you will need.

STEP 3
 Determine the number of glides required.

STEP 4
 Determine what depth of glide you will need to fit your shelving.

STEP 5
 EcoTrac is sold by the carton. Determine the total number of cartons required.

STEP 6
 Save on freight costs by ordering in full pallets.



How to Order Glides & Shelf Attachment Accessories for Gondola or Warehouse Shelving

Glide Size	Glide Lanes		Gondola Shelf Attachment Accessories Needed		Warehouse Shelf Attachment Accessories Needed	
	# Facings per 4' Wide Shelf	# Facings per 3' Wide Shelf	# Accessories per 4' Wide Shelf	# Accessories per 3' Wide Shelf	# Accessories per 4' Wide Shelf	# Accessories per 3' Wide Shelf
8.4 oz.	20	15	2	2	4	4
12 oz. Sleek	19	14	2	2	4	4
10/12 oz. (12/16 oz. "can")	17	13	2	2	4	4
20 oz.	15	11	2	2	4	4
1 Liter Narrow (8W)	13	10	2	2	4	4
1 Liter Wide (7W)	12	9	2	2	4	4
28 oz. (8W)	13	10	4	4	4	4
32 oz.	12	9	2	2	4	4
2 Liter	10	8	4	4	4	4
8.4/12 oz. Sleek MultiPack	9	7	2	2	4	4



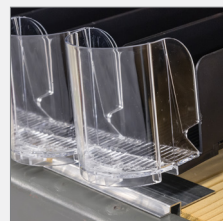
GONDOLA SHELF RETAINER/BRACE



28 OZ. GONDOLA SHELF RETAINER/BRACE



2 LITER GONDOLA SHELF RETAINER/BRACE



WAREHOUSE SHELF RETAINER/BRACE



28 OZ. WAREHOUSE SHELF RETAINER/BRACE



2 LITER WAREHOUSE SHELF RETAINER/BRACE

Glide Calculation Examples

Based on standard depth

Calculate # of Glides

# of 4' Gondola shelves being activated	10
X Facings per shelf - (see chart on left)	15
= Total facings	150
Lanes per glide (see charts)	9
Total Glides (Total facings ÷ Lanes per glide)	17
Standard depth glides per carton (see charts)	6
Total cartons (Total glides ÷ glides per carton)	3

	GLIDE SIZE		
	20 oz.	28 oz.	2 Liter
# of 4' Gondola shelves being activated	10	10	10
X Facings per shelf - (see chart on left)	15	13	10
= Total facings	150	130	100
Lanes per glide (see charts)	9	8	5
Total Glides (Total facings ÷ Lanes per glide)	17	17	20
Standard depth glides per carton (see charts)	6	6	6
Total cartons (Total glides ÷ glides per carton)	3	3	4

Calculate # of Gondola Shelf Attachment Accessories

# of Glides purchasing	17
X Gondola retainers/braces per glide (see chart on left)	2
= Total retainers/braces	34
12" retainer/brace. 12 per bag/ctn	12
12" retainer/brace. 50 per bag/ctn	50
Total 12 pc. bag	3
Total 50 pc. bag	1

	GLIDE SIZE		
	20 oz.	28 oz.	2 Liter
# of Glides purchasing	17	17	20
X Gondola retainers/braces per glide (see chart on left)	2	4	2
= Total retainers/braces	34	68	40
12" retainer/brace. 12 per bag/ctn	12	N/A	12
12" retainer/brace. 50 per bag/ctn	50	50	60
Total 12 pc. bag	3	N/A	4
Total 50 pc. bag	1	2	1

Calculate # of Warehouse Shelf Attachment Accessories

# of Glides purchasing	17
X Warehouse retainers/braces per glide (see chart on left)	2
= Total retainers/braces	34
12" retainer/brace. 12 per bag/ctn	12
Total 12 pc. bag	3

	GLIDE SIZE		
	20 oz.	28 oz.	2 Liter
# of Glides purchasing	17	17	20
X Warehouse retainers/braces per glide (see chart on left)	2	4	2
= Total retainers/braces	34	68	40
12" retainer/brace. 12 per bag/ctn	12	12	12
Total 12 pc. bag	3	6	4

HOW TO ORDER PROFITPUSHER 3



STEP 1
Determine what ProfitPusher 3 system is right for your bottles or cans.



STEP 2
Determine shelf type. (metal, wood, wire)



STEP 3
Determine the shelf width. (24", 30", 36", 48")



STEP 4
Determine the shelf depth. (10" - 30")



STEP 5
Determine the number of shelves.



STEP 6
Determine # of facings per shelf.



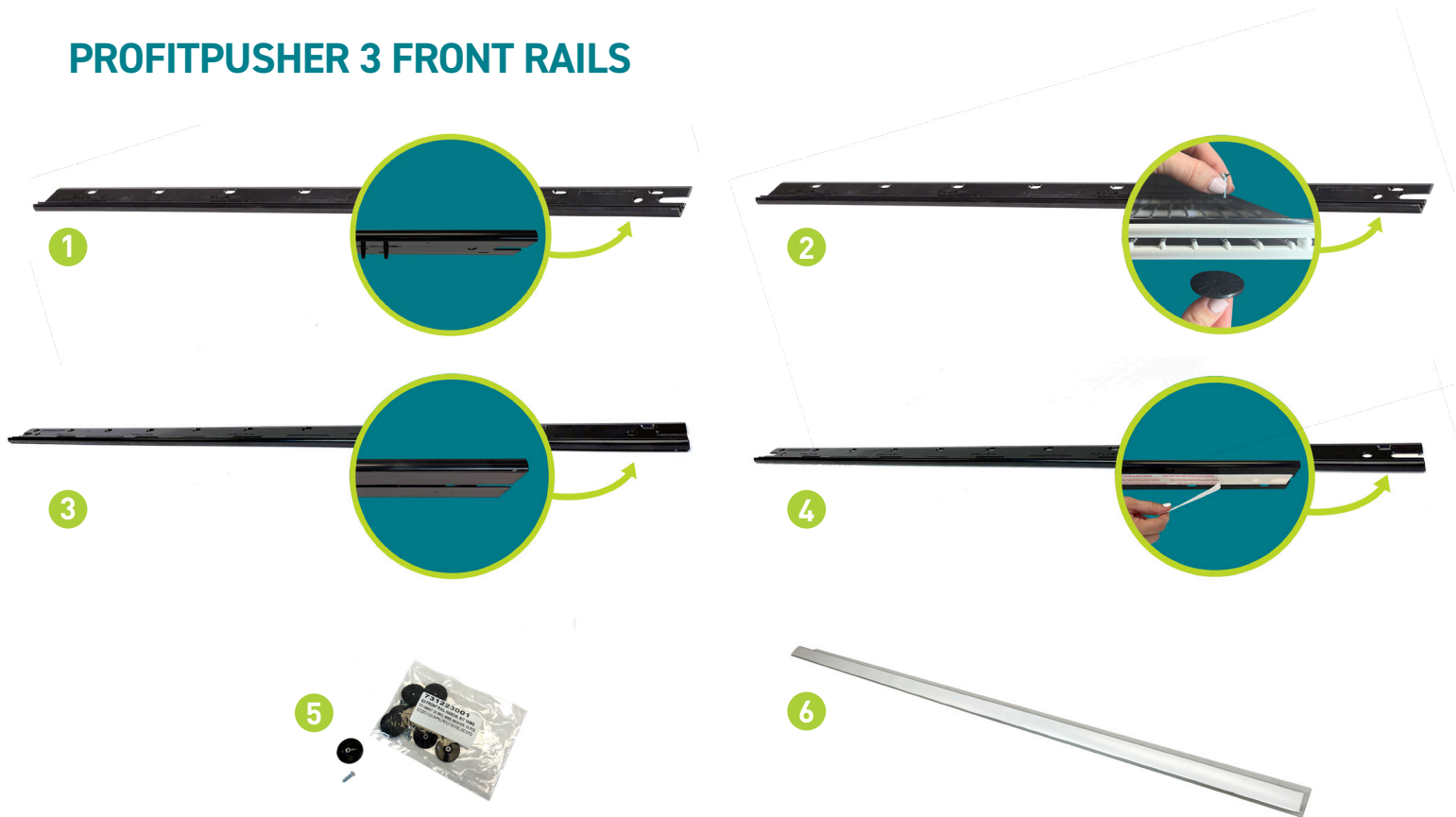
STEP 7
PP3 components are sold by the carton. Determine the total # of cartons required per component.

ProfitPusher® 3 Single-Serve Beverages

Calculating the quantity of ProfitPusher 3 components is as easy as 1, 2, 3:

- 1) Each 24" - 48" shelf gets a Front Rail
- 2) Each linear run gets a Left End and a Right End
- 3) # of T-Tracks for a linear run equals one less than the # of facings

PROFITPUSHER 3 FRONT RAILS



Part	Shelf Type	Width	Standard Carton (in pieces)	
1	Front Rail with Pins	Metal Gondola	24", 30", 36", 48" *	3, 5, 7, 15 Pack
2	Front Rail No Pins**	Wire	24", 30", 36", 48" *	3, 5, 7, 15 Pack
3	Front Rail with Magnets	Solid Metal Gondola	24", 30", 36", 48" *	3, 5, 7, 15 Pack
4	Front Rail with Tape	Wood	24", 30", 36", 48" *	3, 5, 7, 15 Pack
5	Front Rail Hardware Kit	Wire	N/A	10 Per Bag
6	Graphic Channel	Metal Gondola	36", 48" *	15 Pack

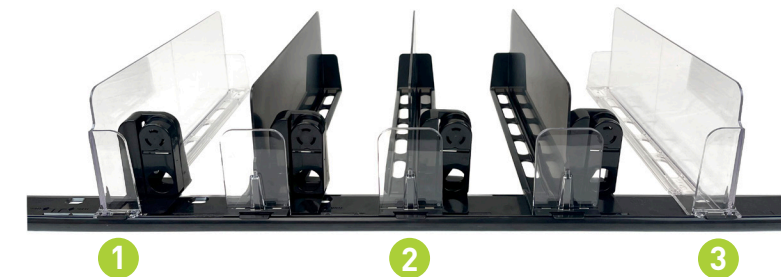
* Custom lengths available at an additional cost
** Requires front rail hardware kit



PROFITPUSHER 3 STANDARD

For 6 oz. to 14 oz. single-serve beverages on short shelf depths, 10"-14", and a mix of different sized single-serve beverages up to 16 oz., on shelf depths 10"-22".

Part	Height	Depth	Standard Carton (in pieces)	
1	Left End	2.1" Front Retainer 2.7" Divider height	10", 12", 14", 16", 18", 20", 22"	5, 8 Pack
2	T-Track	2.1" Front Retainer 2.7" Divider height	10", 12", 14", 16", 18", 20", 22"	15, 25, 50 Pack
3	Right End	2.1" Front Retainer 2.7" Divider height	10", 12", 14", 16", 18", 20", 22"	5, 8 Pack



PROFITPUSHER 3 TALL

For 16 oz to 24 oz single-serve beverages on short shelf depths, 12" and 14".

Part	Height	Depth	Standard Carton (in pieces)	
1	Left End	3.1" Front Retainer 4.5" Divider height	12", 14"	5 Pack
2	T-Track	3.1" Front Retainer 4.5" Divider height	12", 14"	10, 20 Pack
3	Right End	3.1" Front Retainer 4.5" Divider height	12", 14"	5 Pack

HOW TO ORDER PROFITPUSHER 3



STEP 1
Determine what ProfitPusher 3 system is right for your bottles or cans.



STEP 2
Determine shelf type. (metal, wood, wire)



STEP 3
Determine the shelf width. (24", 30", 36", 48")



STEP 4
Determine the shelf depth. (10" - 30")



STEP 5
Determine the number of shelves.



STEP 6
Determine # of facings per shelf.



STEP 7
PP3 components are sold by the carton. Determine the total # of cartons required per component.

ProfitPusher® 3 Single-Serve Beverages (Cont'd)



1



2

PROFITPUSHER 3 ADJUSTABLE TRAY

Adjusts to 6 width settings to fit single-serve beverages from 8 oz. to 40 oz. Also fits standard wine bottles (750 ml) For use on shelves 16" - 20".

Part	Height	Depth	Standard Carton (in pieces)
1 Adjustable Tray	2.6" Front Retainer 4.3" Divider height	16", 18", 20"	16, 48 Pack
2 Adjustable Tray Retainer Extender	3.6" overall once attached, adds 1" to retainer height	N/A	20 Pack



1

2

3

PROFITPUSHER 3 CENTER STORE

Fits 20 oz. or greater single-serve beverages (diameter >2.5"). For use on shelves 20" - 24".

Part	Height	Depth	Standard Carton (in pieces)
1 Left End	2" or 3" Front Retainer 2.7" Divider height	20", 22", 24"	5 Pack
2 T-Track	2" or 3" Front Retainer 2.7" Divider height	20", 22", 24"	10, 20 Pack
3 Right End	2" or 3" Front Retainer 2.7" Divider height	20", 22", 24"	5 Pack

ProfitPusher® 3 Multi-Pack Beverages



1

2

3

PROFITPUSHER 3 CENTER STORE

For select multi-packs on shelf depths 20"-24"*

Part	Height	Depth	Standard Carton (in pieces)
1 Left End	3/4" Front Retainer 2.7" Divider height	20", 22", 24"	5 Pack
2 T-Track Dual Pusher	3/4" Front Retainer 2.7" Divider height	20", 22", 24"	5, 20 Pack
3 Right End	3/4" Front Retainer 2.7" Divider height	20", 22", 24"	5 Pack



1

2

3

PROFITPUSHER 3 PLUS

For select multi-packs on shelf depths 26"-30"*

Part	Height	Depth	Standard Carton (in pieces)
1 Left End	3/4" Front Retainer 1.5" Divider height	26", 28", 30"	5 Pack
2 T-Track Dual Pusher	3/4" Front Retainer 1.5" Divider height	26", 28", 30"	10, 20 Pack
3 Right End	3/4" Front Retainer 1.5" Divider height	26", 28", 30"	5 Pack



**RTC OFFERS A POWERFUL
LINE OF PROVEN STORE
READY SOLUTIONS THAT
INCREASE SALES,
REDUCE LABOR COSTS
AND DRIVE PROFITS.**

**Visit us at [RTC.COM](https://www.rtc.com) to
learn more about our
other products:**

Shelf Management

Theft Deterrence



www.avcompanies.com
(847) 439-9400 | sales@avcompanies.com