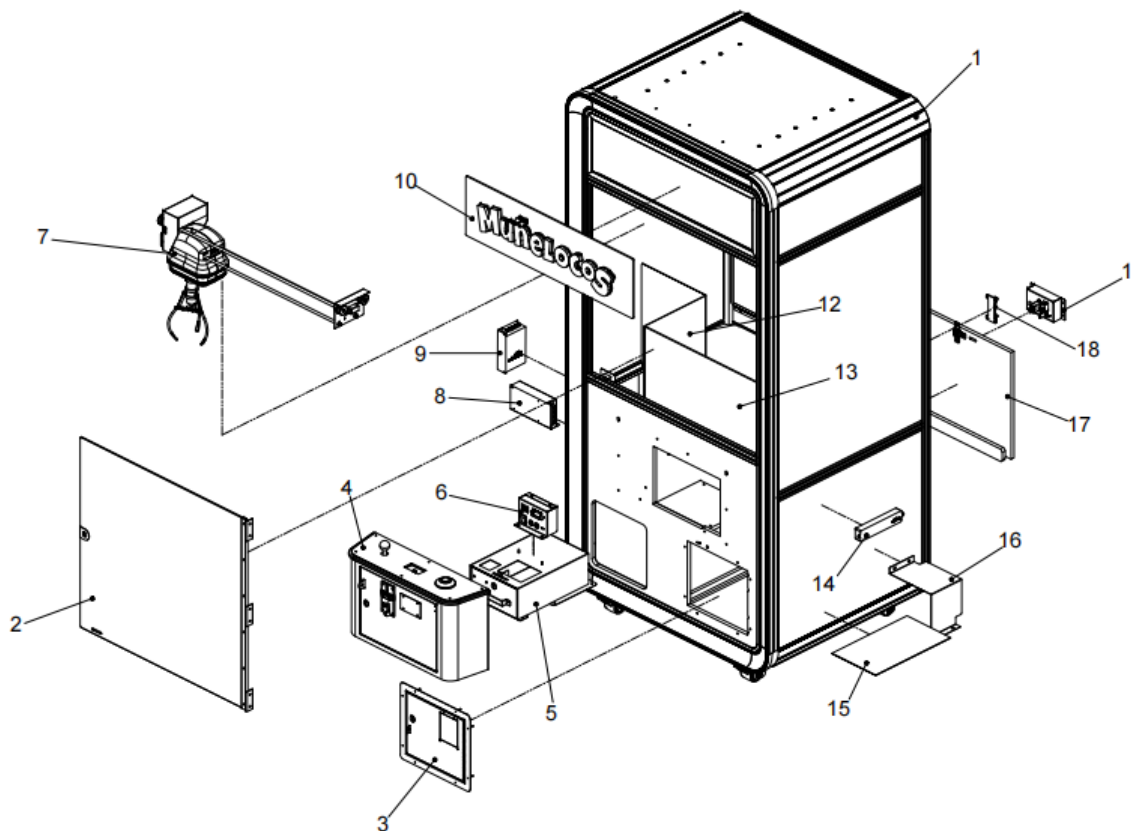


PARTS LIST (CAPTO CRANE MIDI)

No.	Name	Part Code	Quantity
1	Cabinet	Diagram1-Cabinet	1
2	Glass Door Assembly	Diagram2-Glass Door Assembly	1
3	Cash Machine Frame Assembly	Diagram3-Cash Machine Frame Assembly	1
4	Console Sheet Metal Assembly	Diagram4-Console Sheet Metal Assembly	1
5	Coin Box	Diagram5-coin box	1
6	Service Panel	Diagram6-Service Panel	1
7	Middle Size Crane Assembly	01.012.001	1
8	Chassis Power Supply	01.005.012	1
9	Light Strip Power Supply	01.005.013	1
10	Name Plate	\	1
11	\	\	\
12	NO:7	06.028.007	1
13	N0.8	06.028.080	1
14	Sensor Board	01.019.058	1
15	Carpet	01.015.039	1
16	Power Box Cover NO:14	06.028.082	1
17	Rear Small Door	07.023.215	1
18	Anti-Shake Device	01.016.015	1
19	Power Box Assembly	Diagram17-Power Supply Box Assembly	1

Overview



No.	Name	Part Code	Quantity
1	Coin Acceptor Panel	\	1
2	Bill Validator Cover Plate	07.023.205	1
3	Console Door Panel	07.023.004	1
4	Console Sheet Metal Weldment	07.023.024	1
5	Speaker	01.016.008	1
6	Console Panel	07.023.005	1
7	NO:6	06.028.006	1
8	\	\	1
9	Joystick - B	01.008.030	1
10	LCD Panel	01.002.009	1
11	White Rainbow Button	01.008.020	1

Diagram4-Console Sheet Metal Assembly

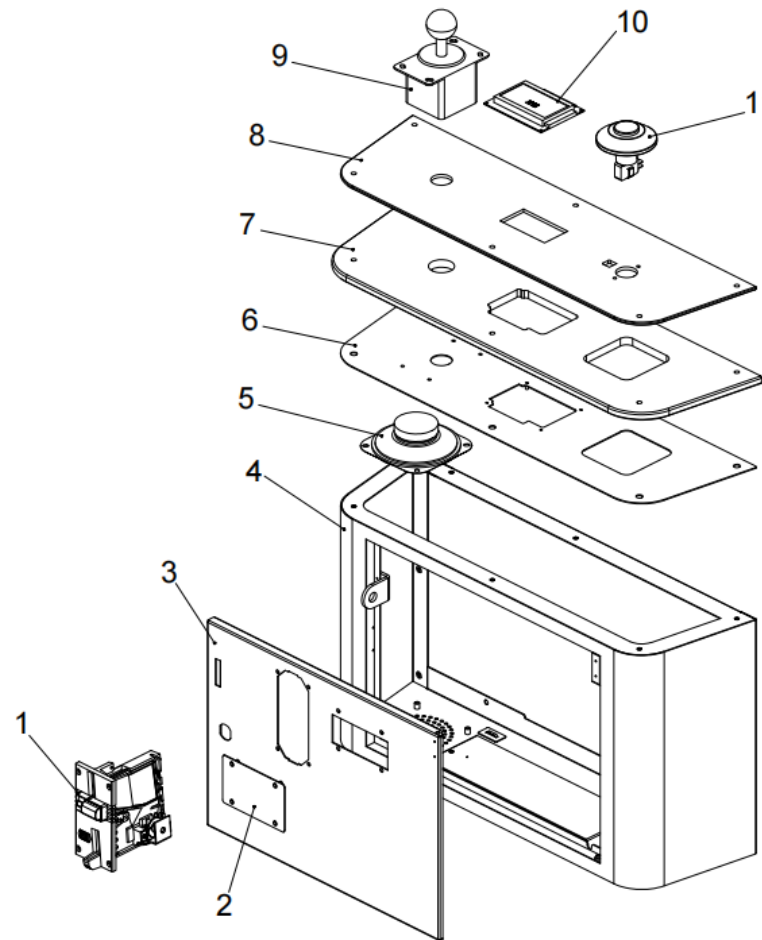
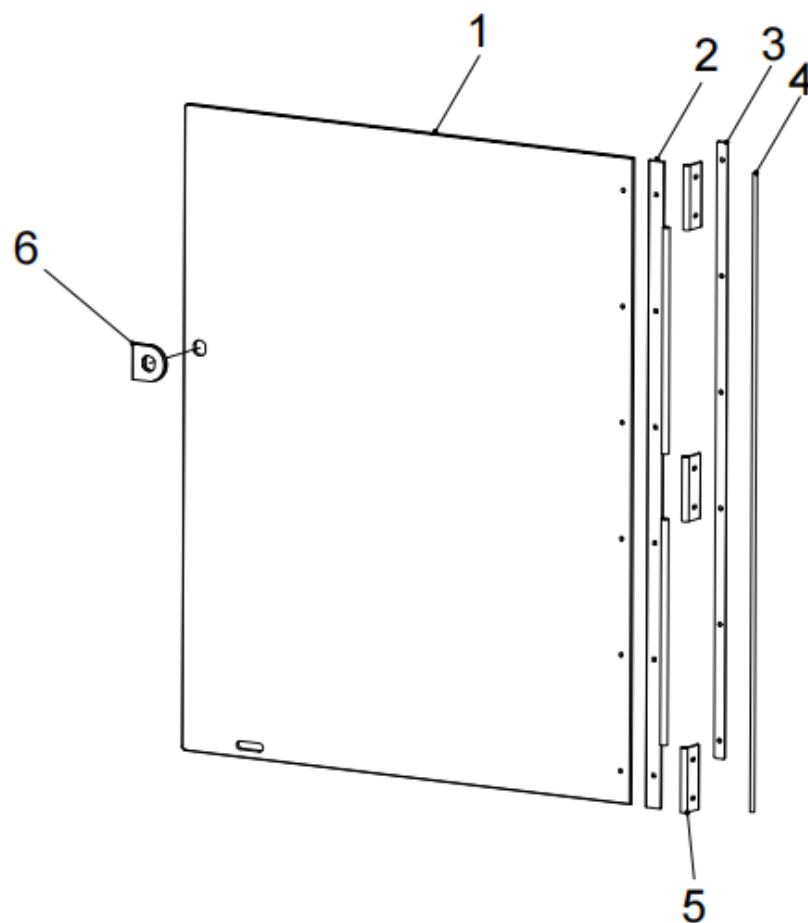


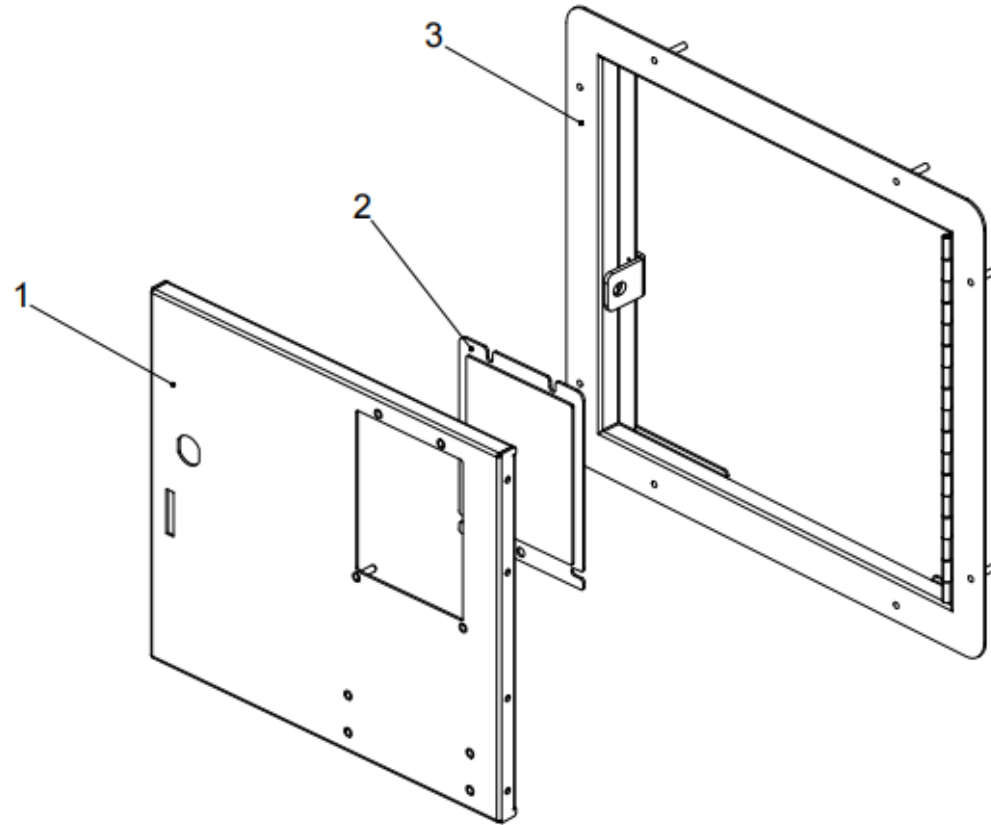
Diagram2-Glass Door Assembly

No.	Name	Part Code	Quantity
1	Glass Door Panel	07.023.206	1
2	Glass Door Hinge 1	07.023.083	1
3	Mirror Finish Stainless Steel Glass Door Hinge Press Strip	07.023.014	1
4	Hinge Rod 1	07.023.199	1
5	Glass Door Hinge 2	07.023.082	3
6	Mirror Finish Stainless Steel Glass Door Lock Plate	07.023.013	1

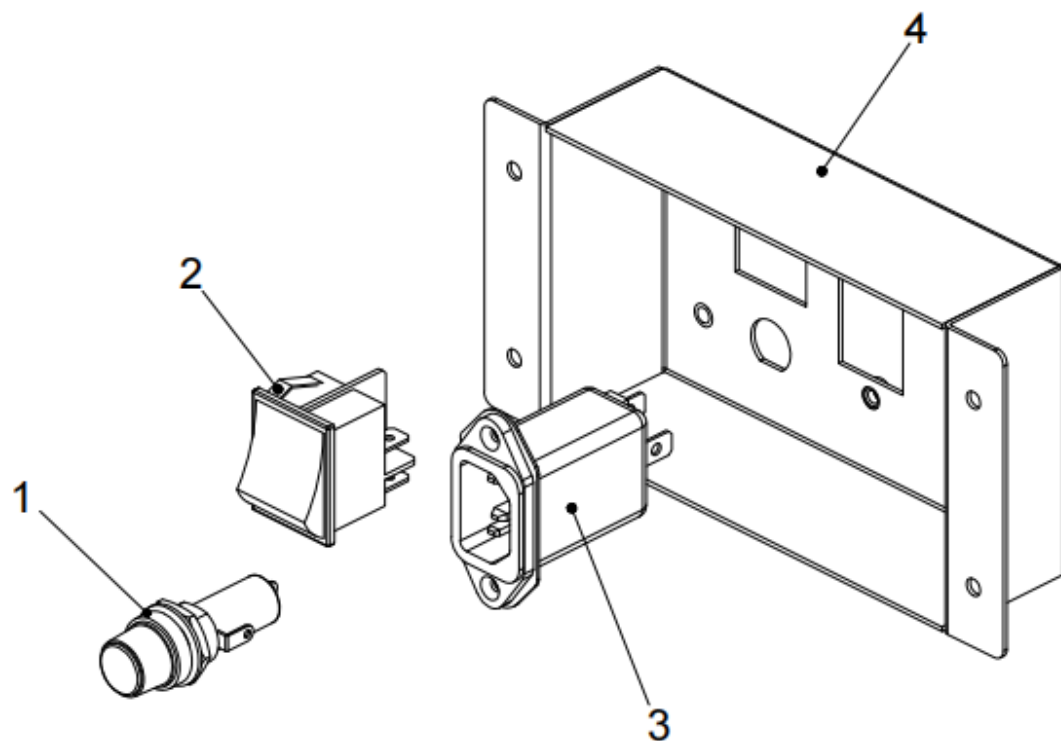


No.	Name	Part Code	Quantity
1	Door Panel Sheet Metal Weldment	07.023.171	1
2	Bill Validator Cover Plate - 2	07.023.176	1
3	Door Panel Frame	07.023.172	1

Diagram3-Cash Machine Frame Assembly

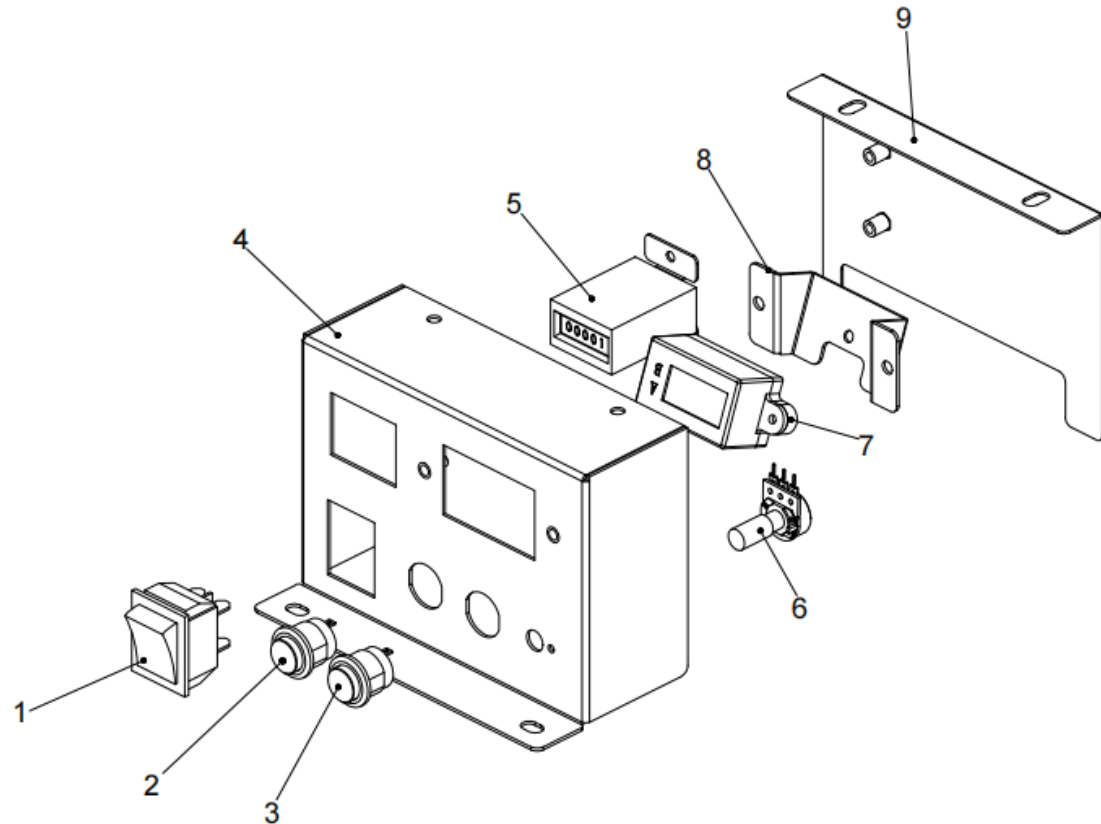


No.	Name	Part Code	Quantity
1	Universal Fuse Holder	01.016.004	1
2	Universal Power Switch	01.016.003	1
3	Filter	01.016.102	1
4	Power Switch Box	07.023.140	1

Diagram:17-Power Supply Box Assembly

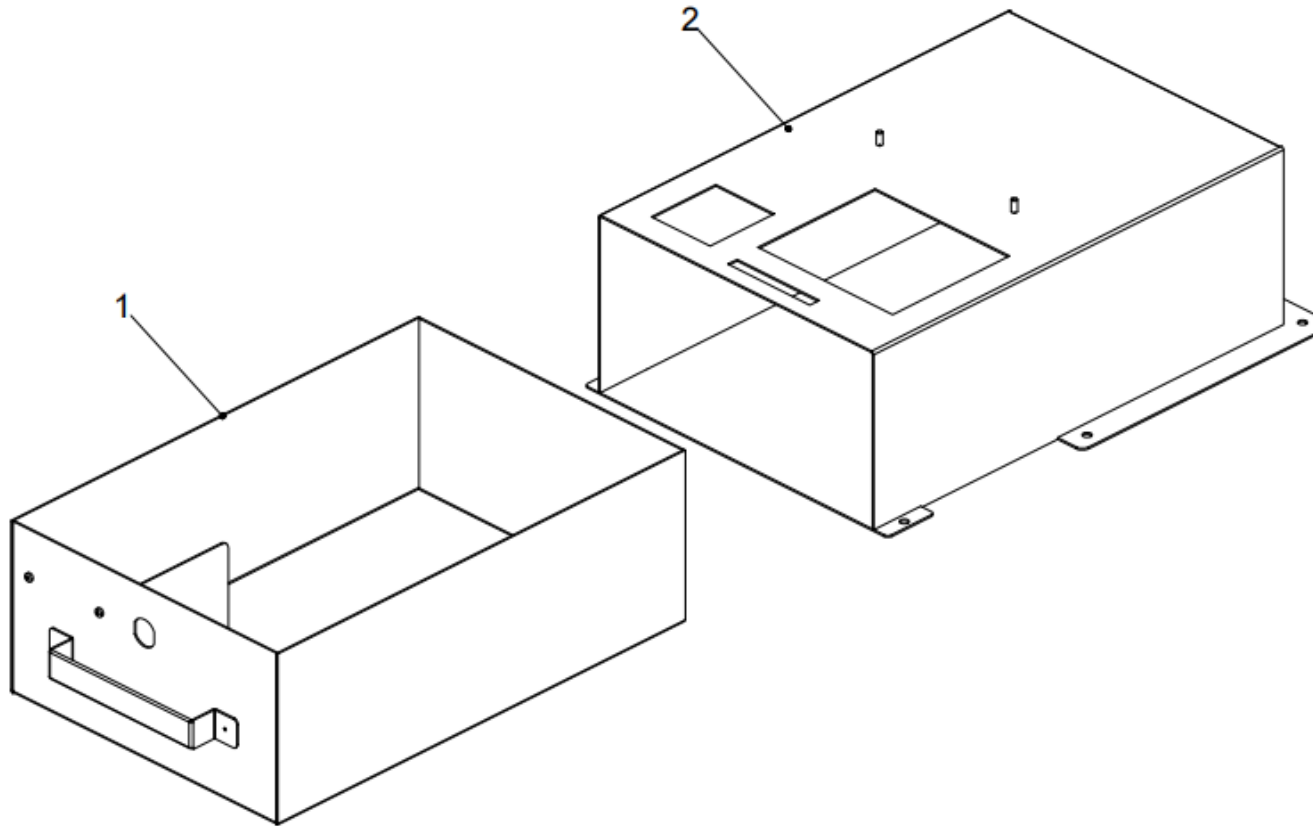
No.	Name	Part Code	Quantity
1	Universal Power Switch	01.016.003	1
2	Universal Setting Button - Red	01.008.017	1
3	Universal Setting Button - Green	01.008.015	1
4	Service Panel	07.023.148	1
5	Mechanical Tachometer	01.016.032	1
6	Knob Switch	01.016.101	1
7	Universal Electronic Tachometer	01.016.051	1
8	Digital meter Bracket	07.023.147	1
9	Service Panel Cover Plate	07.023.010	1

Diagram6-Service Panel



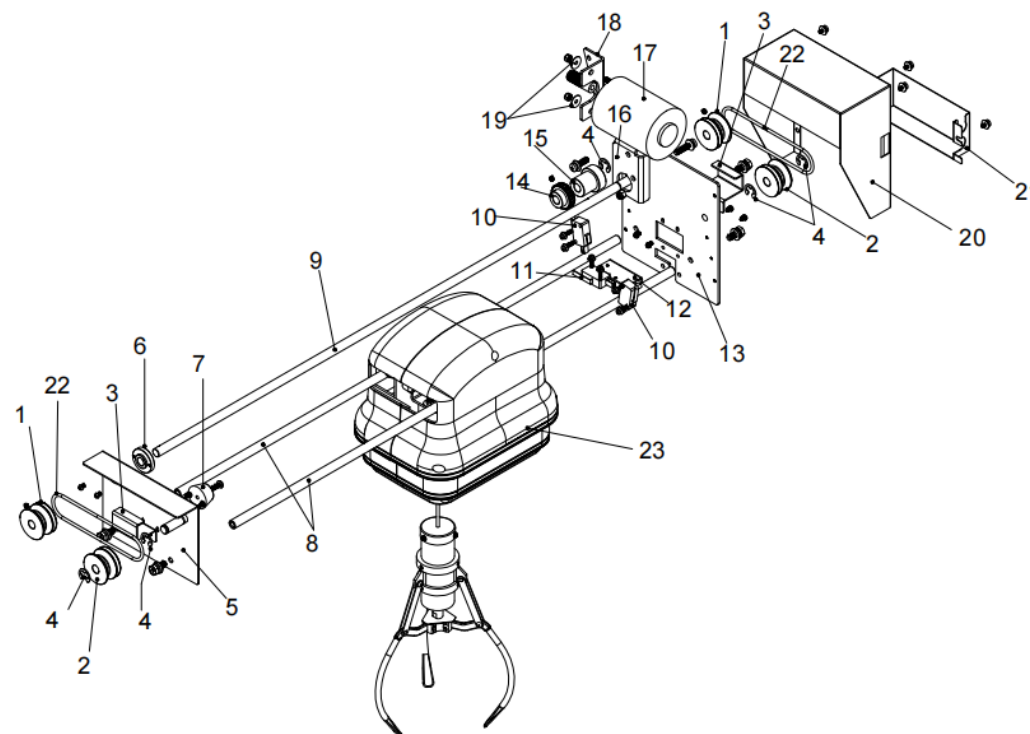
No.	Name	Part Code	Quantity
1	Drawer Box	07.023.028	1
2	Coin Box	07.023.027	1

Diagram5-Coin Box



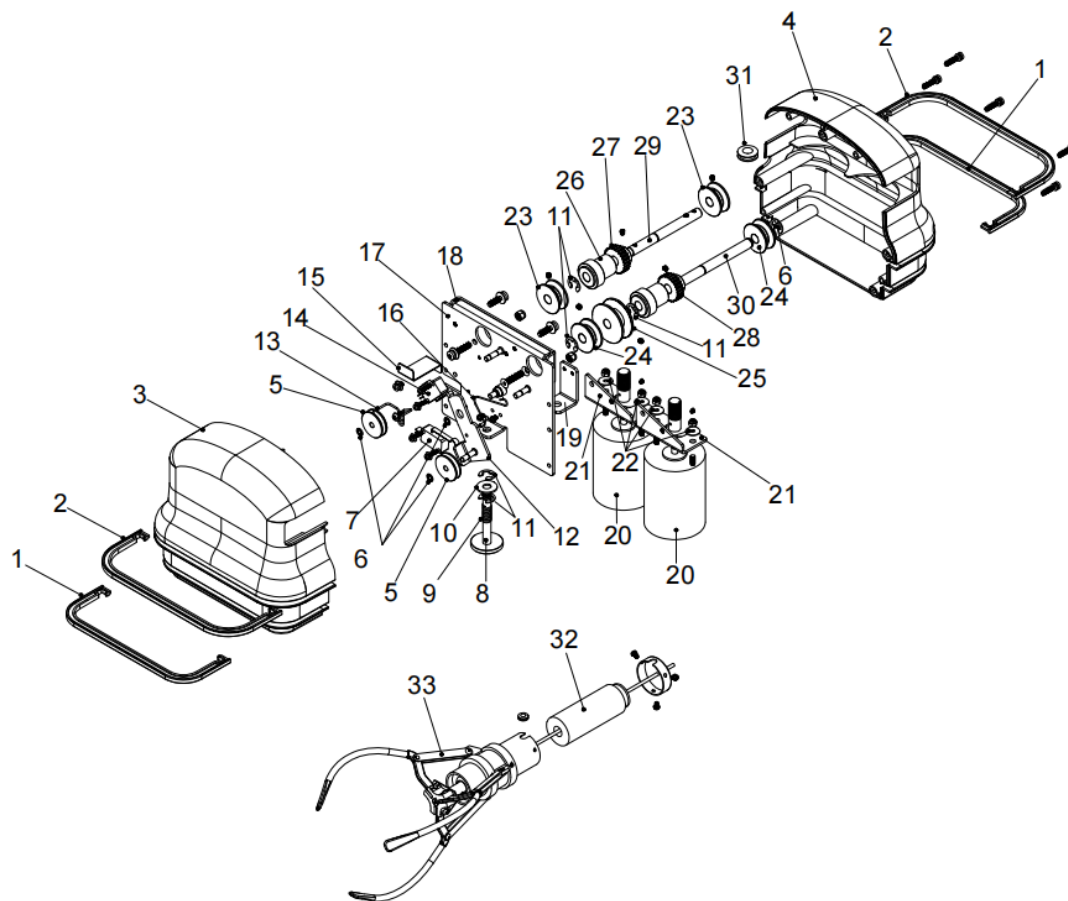
No.	Name	Part Code	Quantity
1	Front & back pulley(no hole)	07.023.058	1
2	Front & back pulley(with hole)	07.023.045	1
3	Left & right slip proof cover	07.023.034	2
4	4E snap ring	01.021.060	5
5	Fixture board-R	07.023.029	1
6	Shaft	07.023.049	1
7	Rubber mat	07.023.221	1
8	Middle size claw-guide rod 1 841.4mm	07.023.231	2
9	Middle size claw-Guide rod 2 841.4mm	07.023.232	1
10	Z,PPY micro switch(wheel)	07.023.064	2
11	Z,PPY micro switch(short)	07.023.063	1
12	Micro switch bracket	07.023.033	1
13	Front & back motor fixture board	07.023.030	1
14	Plastic gear wheel	07.023.044	1
15	Guide shaft	07.023.046	1
16	Motor connect board	07.023.036	1
17	Motor	07.023.071	1
18	Motor fixture	07.023.035	1
19	Motor mat	07.023.226	2
20	Left cover	07.023.031	1
21	Wiring cover	07.023.032	1
22	Belt	07.023.066	2
23	Movable motor component	\	1

7-Middle Size Claw



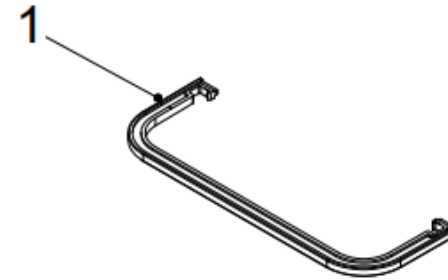
No.	Name	Part Code	Quantity
1	Claw box deco strip-short	\	2
2	Claw box deco strip-long	\	2
3	Front box	01.010.119	1
4	Back box	01.010.120	1
5	Wire hanging wheel	07.023.050	2
6	Φ4 blossom snap ring	01.021.059	3
7	Z,PPY micro switch(arc)	07.023.062	1
8	Anti-shake part	07.023.056	1
9	Spring	07.023.222	1
10	Washer	07.023.223	1
11	Φ4E snap ring	01.021.060	6
12	Spring install board component	07.023.040	1
13	Wire stop strip	07.023.225	2
14	Z,PPY micro switch(wheel)	07.023.064	1
15	Locate plate	07.023.224	1
16	Wire stop torsional spring	07.023.070	1
17	Install Board	07.023.227	1
18	Motor connect board	07.023.228	1
19	Wire locate part	07.023.041	1
20	Motor	07.023.071	2
21	Motor Fixture	07.023.035	2
22	Motor mat	07.023.226	4
23	Left& right pulley(with hole)	07.023.054	2
24	Left& right pulley(no hole)	07.023.057	2
25	Wire roll wheel	07.023.051	1
26	Guide shaft	07.023.046	2
27	Plastic gear wheel	07.023.044	1
28	Iron gear wheel	07.023.047	1
29	Gear wheel shaft 1	07.023.052	1
30	Gear wheel shaft 2	07.023.053	1
31	Seal ring	01.010.142	1
32	Solenoid	07.023.061	1
33	Middle Size Claw	01.016.024	1

7-23-Movable Motor Component



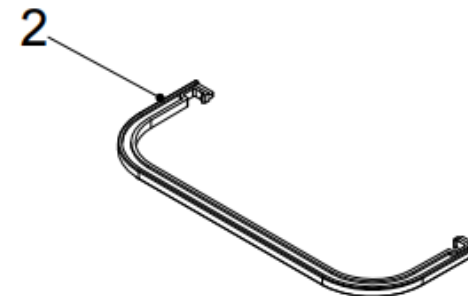
No.	Name	Part Code	Color	Quantity
1	Claw box deco strip-short	01.010.128	Blue	2
2	Claw box deco strip-short	01.010.141	Green	2
3	Claw box deco strip-short	01.010.144	Red	2
4	Claw box deco strip-short	01.010.146	Yellow	2
5	Claw box deco strip-short	01.010.148	Pink	2
6	Claw box deco strip-short	01.010.150	White	2

Claw Box Deco Strip-Short



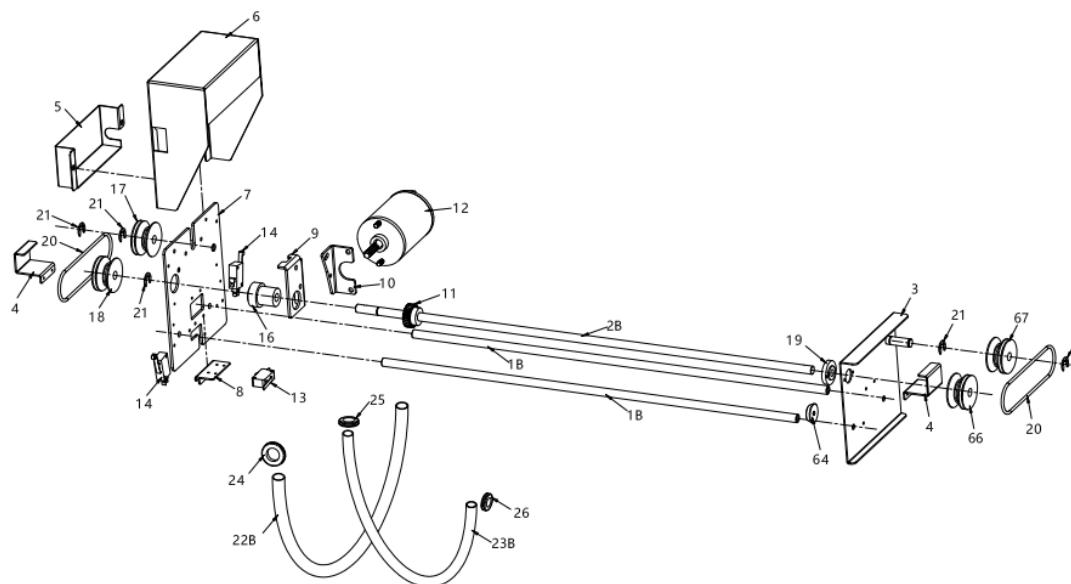
No.	Name	Part Code	Color	Quantity
1	Claw box deco strip-long	01.010.127	Blue	2
2	Claw box deco strip-long	01.010.140	Green	2
3	Claw box deco strip-long	01.010.143	Red	2
4	Claw box deco strip-long	01.010.145	Yellow	2
5	Claw box deco strip-long	01.010.147	Pink	2
6	Claw box deco strip-long	01.010.149	White	2

Claw Box Deco Strip-Long



No.	Name	Part Code	Quantity
1B	XML middle size claw-884 sub rod	07.023.308	2
2B	XML middle size claw-884 main rod	07.023.309	1
3	XML middle size claw-right side board	07.023.245	1
4	XML middle size claw-bracket	07.023.246	2
5	XML middle size claw-side box	07.023.247	1
6	XML middle size claw-side cover	07.023.248	1
7	XML middle size claw-left side board	07.023.249	1
8	XML middle size claw-micro switch bracket	07.023.250	1
9	XML middle size claw-left motor bracket	07.023.251	1
10	XML middle size claw-motor bracket	07.023.252	3
11	XML middle size claw-rubber gear wheel	07.023.253	3
12	Direct current motor 24V-3800RPM without break	01.009.148	2
13	XML middle size claw-left micro switch	07.023.254	1
14	XML middle size claw-front & back micro switch	07.023.255	2
15	Direct current motor 24V-3800RPM with break	01.009.147	1
16	XML middle size claw-long sleeve suit	07.023.256	3
17	XML middle size claw-double groove wheel	07.023.257	1
18	XML middle size claw-double groove wheel with teeth	07.023.258	1
19	XML middle size claw-flat sleeve suit	07.023.259	1
20	XML middle size claw-green belt	07.023.260	2
21	XML middle size claw-7mm steel snap ring	07.023.261	11
22B	XML middle size claw-884 big spring tube	07.023.310	1
23B	XML middle size claw-884 small spring tube	07.023.311	1
24	XML middle size claw-16 wire grommet	07.023.264	1
25	XML middle size claw-14 wire grommet	07.023.265	1
26	XML middle size claw-11 wire grommet	07.023.266	1

01.012.038-XML Middle Size Claw-1



No.	Name	Part Code	Quantity
27	XML Claw-middle board	07.023.267	1
28	XML Claw-stop board	07.023.268	1
29	XML Claw-slide brick	07.023.269	1
30	XML Claw-micro switch mat	07.023.270	1
31	XML Claw-middle fixture	07.023.271	1
32	XML Claw-short sleeve	07.023.272	1
33	XML Claw-short sleeve with groove	07.023.273	1
34	XML Claw-guide board	07.023.274	1
35	XML Claw-wire tube	07.023.275	1
36B	XML Claw-tube top cover	07.023.312	1
38B	XML Claw-wire ring	07.023.313	1
39	XML Claw-0.9 press spring	07.023.279	1
40	XML Claw-single groove wheel with teeth	07.023.280	2
41	XML Claw-single groove wheel	07.023.281	2
42	XML Claw-rope wheel	07.023.282	1
43	XML Claw-4mm steel snap ring	07.023.283	2
44	XML Claw-rope wheel	07.023.284	2
45	XML Claw-wheel stop rod	07.023.285	1
46	XML Claw-5 bearing clip	07.023.286	1
47	XML Claw-1.1 torsional spring	07.023.287	1
48	XML Claw-terminal block	07.023.288	1
49	XML Claw-down micro switch	07.023.289	1
50	XML Claw-up micro switch	07.023.290	1
51	XML Claw-claw glove	07.023.291	3
52	XML Claw-8mm flat sheet	07.023.292	1
53B	XML Middle Size Claw-iron ring	07.023.314	2
54B	XML Middle Size Claw-claw fixture	07.023.315	1
55B	XML Middle Size Claw-connect plate	07.023.316	3 对
56B	XML Middle Size Claw-steel tube	07.023.317	1
57B	XML Middle Size Claw-tube inner cover	07.023.318	1
58B	XML Middle Size Claw-Magnetic absorb bar	07.023.319	1
59B	XML Middle Size Claw-claw feet	07.023.320	3
60B	XML Middle Size Claw-triangle plate	07.023.321	1

61B	XML Middle Size Claw-guide groove	07.023.322	1
62	XML Claw-rope	07.023.302	1
63	XML Claw-spring wire	07.023.303	1
64	XML Claw- anti-collision rubber	07.023.304	2
65	XML Claw- anti-collision brick	07.023.305	1
66	XML Claw-front right wheel-big	07.023.306	1
67	XML Claw-back right wheel-big	07.023.307	1
68	Front box	01.010.119	1
69	Back box	01.010.120	1
70	long blue strip	01.010.127	2
71	short blue strip	01.010.128	2

01.012.038-XML Middle Size Claw-2

