

- PS-IMCB-2496
- PS-IMCB-3696
- PS-IMCB-4296
- PS-IMCB-4896

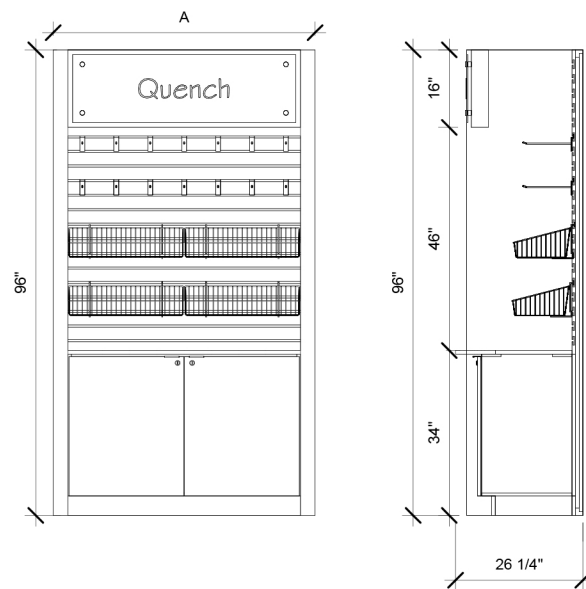


Description:

The IMCB, In-line Merchandiser Cabinet Base, is 96" tall with a 16" header. The IMCB features a half-height slat wall with lockable double door storage cabinet, sturdy plywood frame construction, and LED lighting located inside the header. Shelves, baskets, and hooks are easily configured to maximize merchandising opportunities around a self-pay unit or coffee machine. The slat wall above the rigid mid shelf has ample space for additional merchandising with shelves, baskets, and hooks. The full euro style storage cabinet features a cam lock in each door (multiples keyed the same) and full overlay self closing hinges. One interior adjustable shelf and four shelf pins are included with each storage base. An acrylic sign fixed to the header is optional and can be customized to your needs.

Premium In-Line Series Fixture

A 96" tall coffee merchandiser with a countertop, merchandiser system, and euro style storage cabinets



MODEL	Inside Width-A	Outside Width-A	Overall Height	Counter Height	Counter Depth
PS-IMCB-2496	24"	30"	96"	34"	24"
PS-IMCB-3696	36"	42"	96"	34"	24"
PS-IMCB-4296	42"	48"	96"	34"	24"
PS-IMCB-4896	48"	54"	96"	34"	24"

Hardware Packages



24" Sloping Basket
24 x 12 x 6 x 2
BSK-24120804



12" Basket
12 x 12 x 4
BSK-121204



12" Sloping Basket
12 x 12 x 8 x 4
BSK-12120804



Adjustable Angled Shelf Kit
V-SHLF-(SIZE)-(COLOR)



Slatwall Hook
HOOK-800

Premium In-Line Merchandiser Cabinet Base Hardware Packages

	24" Width	36" Width	42" Width	48" Width
Hardware Package A	(6) 8" Hooks, (4) 12" w x 12" d x 8" back x 4" front Sloping Wire Baskets	(10) 8" Hooks, (6) 12" w x 12" d x 8" back x 4" front Sloping Wire Baskets	(10) 8" Hooks, (6) 12" w x 12" d x 8" back x 4" front Sloping Wire Baskets	(12) 8" Hooks, (4) 24" w x 12" d x 6" back x 2" front Sloping Wire Baskets
Hardware Package B	(6) 8" Hooks, (2) Millwork Shelves with Acrylic Product Stops - Half Width	(10) 8" Hooks, (2) Millwork Shelves with Acrylic Product Stops - Half Width	(10) 8" Hooks, (2) Millwork Shelves with Acrylic Product Stops - Half Width	(12) 8" Hooks, (2) Millwork Shelves with Acrylic Product Stops - Half Width
Hardware Package C	(4) Millwork Shelves with Acrylic Product Stops - Half Width	(4) Millwork Shelves with Acrylic Product Stops - Half Width	(4) Millwork Shelves with Acrylic Product Stops - Half Width	(4) Millwork Shelves with Acrylic Product Stops - Half Width

Standard Color Options



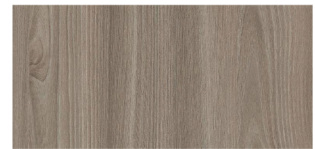
Stone Wood
Color Code: CLSW



Black Pine
Color Code: CDBP



White Elm
Color Code: WLWE



River Elm
Color Code: WDRE

Other colors available - Ask us!

Specifications

	24" Width	36" Width	42" Width	48" Width
Shipping Weight (lbs)	*	*	*	*
Shipping Dimensions	*	*	*	*

*The Premium Series (PS-) ships in custom crating depending on the Micro-Market. Freight charges are quoted upon request.

Electrical Specifications

Volts / Hz / Phase	115 / 60 / 1
Amps	0.1
NEMA Configuration	5-15P



www.avscorporations.com
(847)439-9400 | sales@avscorporations.com