

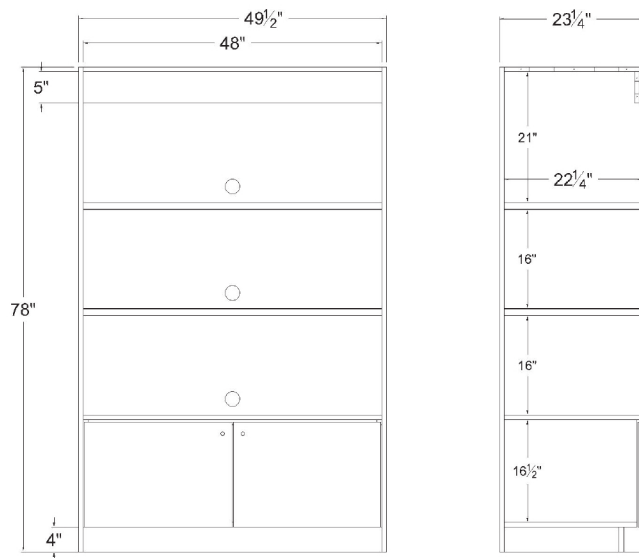


Description:

The IFSMC6, In-line Free Standing Microwave Cabinet (six microwaves), is 78" tall. The IFSMC6 features three rigid shelves, sturdy plywood frame construction, and a euro style cabinet base. The full euro style Storage cabinet features a cam lock in each door (multiples keyed the same) and full overlay self closing hinges. The IFSMC6 ships fully assembled.

Microwave Stands

A 78" tall free standing microwave cabinet for six microwaves



MODEL	Inside Width-A	Outside Width-A	Overall Height	Overall Depth
IFSMC6-4878	48"	49.5"	78"	23.25"

Hardware Packages



24" Sloping Basket
24 x 12 x 6 x 2
BSK-24120804



12" Basket
12 x 12 x 4
BSK-121204



12" Sloping Basket
12 x 12 x 8 x 4
BSK-12120804



Adjustable Angled Shelf Kit
V-SHLF-(SIZE)-(COLOR)



Slatwall Hook
HOOK-800

In-Line Free Standing Microwave Cabinet 6x Hardware Packages

	48" Width	N/A	N/A	N/A
Hardware Package A	N/A	N/A	N/A	N/A
Hardware Package B	N/A	N/A	N/A	N/A
Hardware Package C	N/A	N/A	N/A	N/A

Standard Color Options



Stone Wood
Color Code: CLSW



Black Pine
Color Code: CDBP



White Elm
Color Code: WLWE



River Elm
Color Code: WDRE

Other colors available - Ask us!

Specifications

	48" Width	N/A	N/A	N/A
Shipping Weight (lbs)	344			
Shipping Dimensions	57" L x 31" W x 84" H			

Electrical Specifications

Volts / Hz / Phase	-
Amps	-
NEMA Configuration	-